

36° 2' 30"

LATITUDE

100° 10' 00"

LONGITUDE

7'5 OGIS topo location

7.5' loc	<u>.895</u>	15' loc	_____
	<u>1.77 W</u>	(calc.)	_____

Company _____

Farm _____

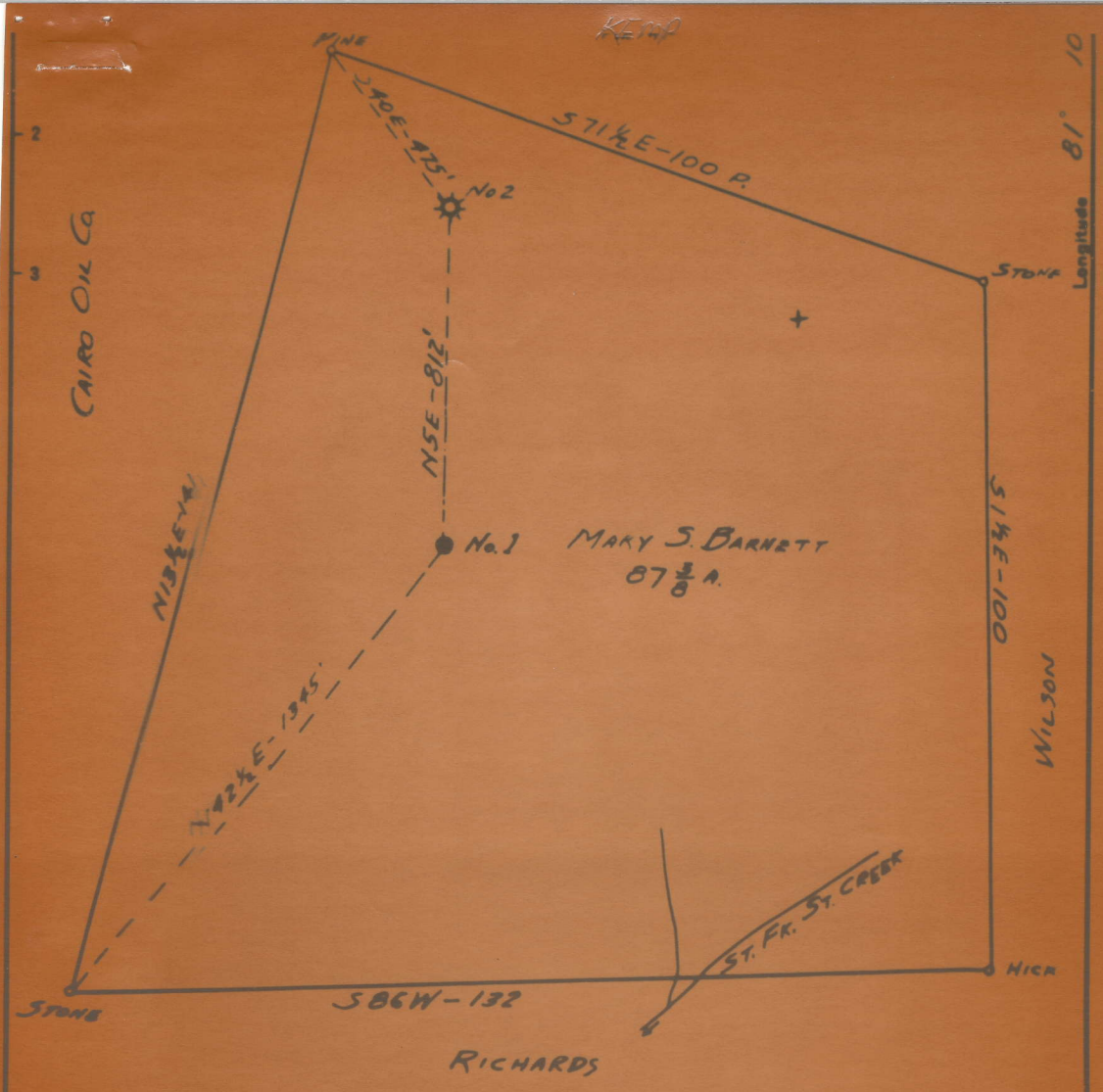
Quad Montford

County Wirt

District Burning Springs

WELL LOCATION MAP

File No. 73-17



New Location
 Drill Deeper
 Abandonment No. 1 - No. 2 = Wire No. 68

Company GLEN W. ROBERTS
 Address ELIZABETH, W. VA.
 Farm MARY S. BARNETT
 Tract _____ Acres 87 3/8 Lease No. _____
 Well (Farm) No. ONE Serial No. _____
 Elevation (Spirit Level) 910'
 Quadrangle HARRISVILLE
 County WIRT District DUNN'S SPRINGS
 Engineer Glen W. Roberts
 Engineer's Registration No. 260

STATE OF WEST VIRGINIA
 DEPARTMENT OF MINES
 OIL AND GAS DIVISION
 CHARLESTON

WELL LOCATION MAP
 FILE NO. WIRT-73-A

+ Denotes location of well on United States Topographic Maps, scale 1 to 62,500, latitude and longitude lines being represented by border lines as shown.

5-15-51

BARNETT, MARY S., NO. 1.

Wirt-73-A.

By Glen W. Roberts.

Burning Springs Dist.

(NO PLAT)

39 05

01 10