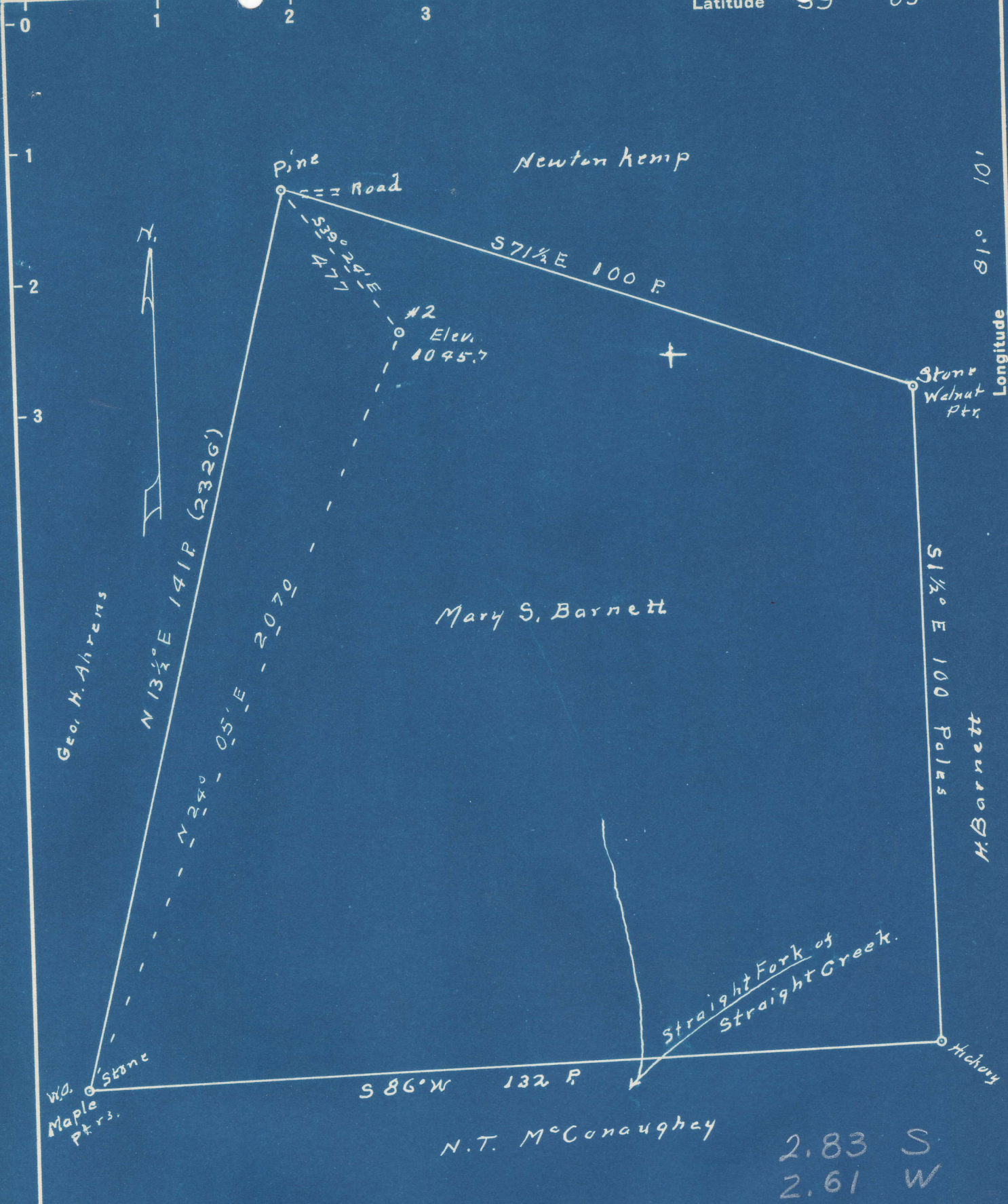


Latitude 39° 05'



2.83 S
2.61 W

New Location...
 Drill Deeper.....
 Abandonment.....

Company Tri State Oil + Gas
 Address Box 827 Parkersburg W.Va.
 Farm Mary S Barnett
 Tract _____ Acres 87 3/8 Lease No. _____
 Well (Farm) No. 2 Serial No. _____
 Elevation (Spirit Level) 1045.7
 Quadrangle Harrisville
 County Wirt District Burning Springs
 Engineer Robert R. Anderson
 Engineer's Registration No. 296
 File No. _____ Drawing No. _____
 Date Aug. 24, 49 Scale 1 in = 20 Poles

STATE OF WEST VIRGINIA
 DEPARTMENT OF MINES
 OIL AND GAS DIVISION
 CHARLESTON

WELL LOCATION MAP
 FILE NO. Wirt-68A

+ Denotes location of well on United States Topographic Maps, scale 1 to 62,500, latitude and longitude lines being represented by border lines as shown.

- Denotes one inch spaces on border line of original tracing.