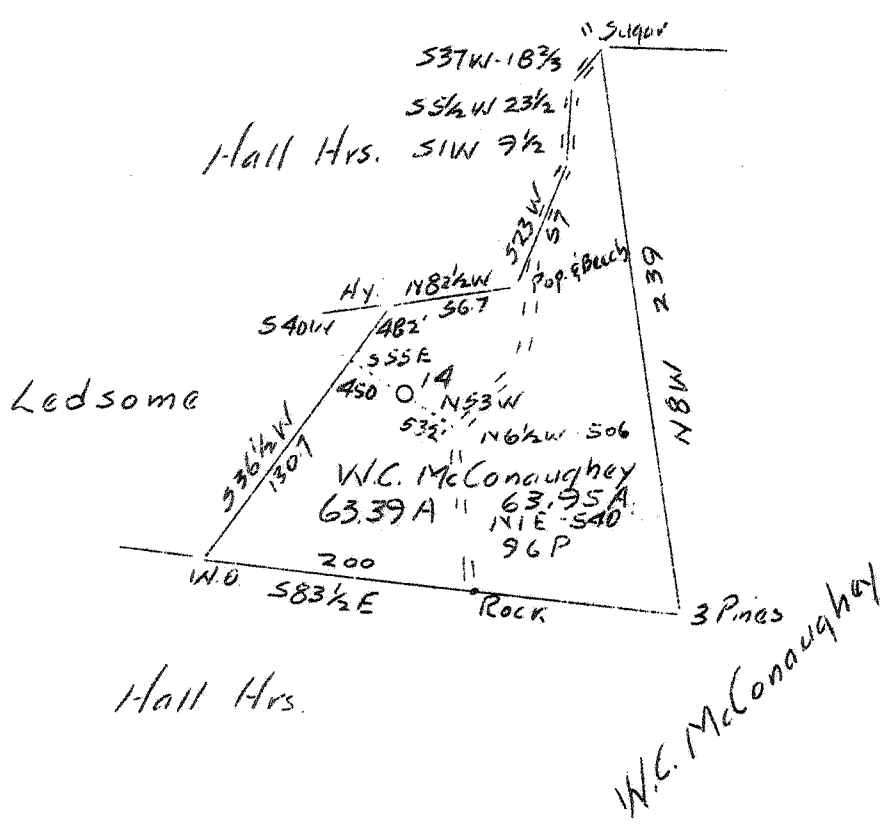


0 1 2 3 LATITUDE 8° 15' T

LONGITUDE 39° 00'



0.64 W
0.04 A

Company Glen W. Roberts
 Address Elizabeth, W. Va.
 Farm W. C. McConaughy
 Tract 63.39 Acres Lease No. _____
 Well (Farm) No. 5 Serial No. 14
 Elevation (Spirit Level) 717 feet
 Quadrangle Spencer **(NE)**
 County Wirt District Burning Springs
 Engineer Glen W. Roberts
 Engineer's Registration No. _____
 File No. _____ Drawing No. _____
 Date 5-15-36 Scale 1" 1320 feet

STATE OF WEST VIRGINIA
 Department of Mines
 OIL AND GAS DIVISION
 Charleston

WELL LOCATION MAP
 File No. WIRT-25A

+ Denotes location of well on U. S. Topographic Maps, scale 1 to 62,500 latitude and longitude lines being represented by border lines as shown
 — Denotes one inch spaces on border line of original tracing.