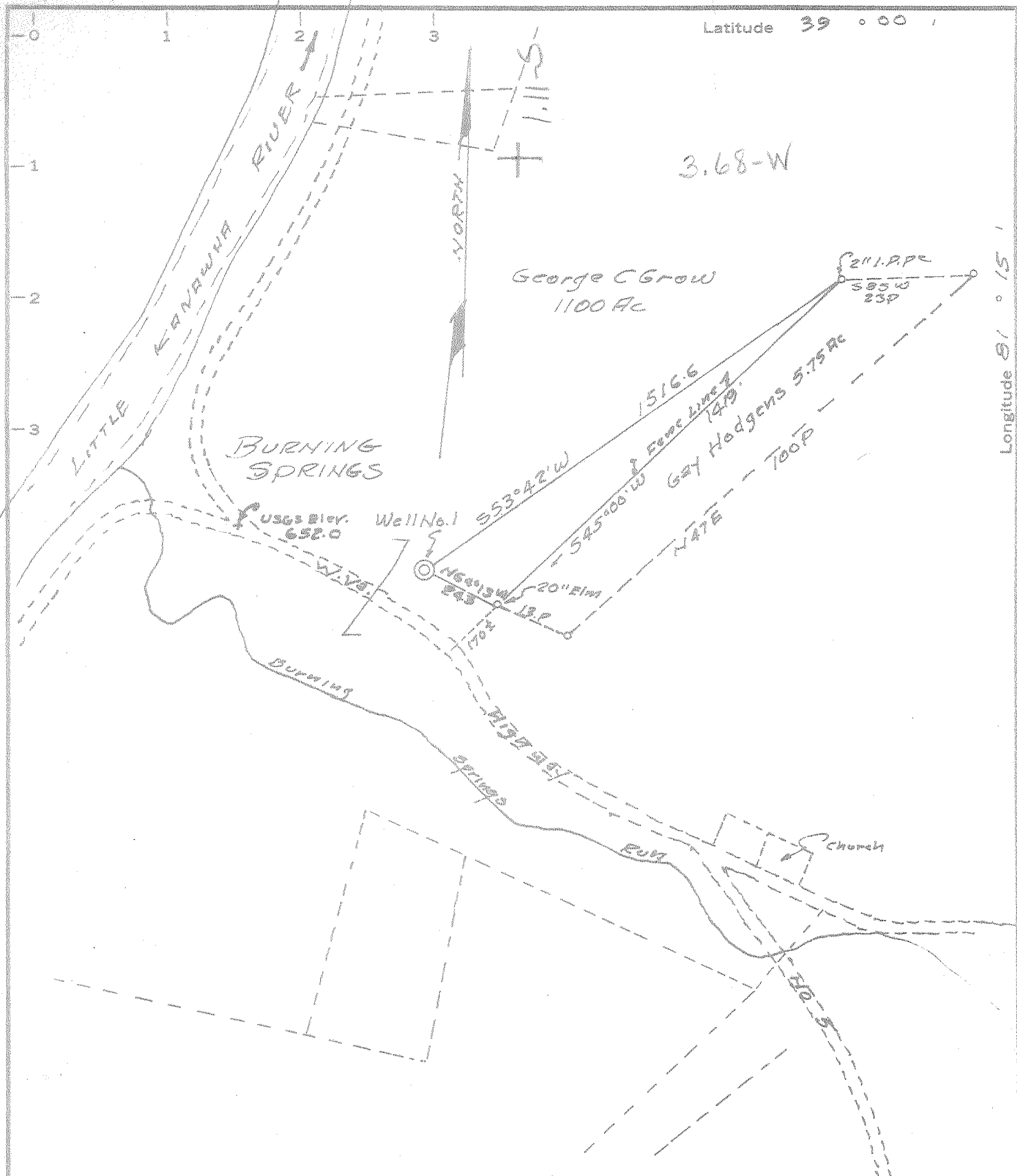


Latitude 39 00 1

Longitude 81 0 15



MINIMUM ERROR OF CLOSURE 1' IN 200

SOURCE OF ELEVATION USGS Elev as shown on plot

New Location
 Drill Deeper
 Abandonment

Elev. 652.0
 I, THE UNDERSIGNED, HEREBY CERTIFY THAT THIS MAP IS CORRECT TO THE BEST OF MY KNOWLEDGE AND BELIEF AND SHOWS ALL THE INFORMATION REQUIRED BY PARAGRAPH 6 OF THE RULES AND REGULATIONS OF THE OIL AND GAS SECTION OF THE MINING LAWS OF WEST VIRGINIA.

Issued 4-17-68

Company WEVA OIL CORP
 Address % George Powell, Union Trust Bldg, Parkersburg, W.V.
 Farm George C. Grow
 Tract _____ Acres 100 Lease No. _____
 Well (Farm) No. ONE Serial No. _____
 Elevation (Spirit Level) 651.2
 Quadrangle SPENCER **NE**
 County Wirt District Burning Springs
 Engineer Raymond E. [Signature]
 Engineer's Registration No. 4801
 File No. _____ Drawing No. _____
 Date MAR 4 1968 Scale 1" = 400

STATE OF WEST VIRGINIA
 DEPARTMENT OF MINES
 OIL AND GAS DIVISION
 CHARLESTON
WELL LOCATION MAP
 FILE NO. WIR-548-P

+ Denotes location of well on United States Topographic Maps, scale 1 to 62,500, latitude and longitude lines being represented by border lines as shown.
 - Denotes one inch spaces on border line of original tracing.

Deep well Newburg 3-0329

MAY 1 1968



STATE OF WEST VIRGINIA
DEPARTMENT OF MINES
OIL AND GAS DIVISION

- Rotary
- Spudder
- Cable Tools
- Storage

Quadrangle Spencer

Permit No. WIR - 548

WELL RECORD

Oil or Gas Well Dry
(KIND)

Company Belco Petroleum, Inc.
 Address 630 Third Avenue New York, N.Y.
 Farm George Grow Acres 1.100
 Location (waters) Little Kanawha River
 Well No. One Elev. 661.2
 District Burning Springs County Wirt
 The surface of tract is owned in fee by George Grow
 Address Newark, New Jersey
 Mineral rights are owned by Same

Drilling commenced 3/7/68
 Drilling completed 4/11/68
 Date Shot From To

Open Flow /10ths Water in Inch
/10ths Merc. in Inch

Volume Cu. Ft.
 Lock Pressure lbs. hrs.
 Oil bbls., 1st 24 hrs.

WELL ACIDIZED (DETAILS)

WELL FRACTURED (DETAILS)

RESULT AFTER TREATMENT (Initial open Flow or bbls.)

LOCK PRESSURE AFTER TREATMENT HOURS

Fresh Water Feet Salt Water Feet

Producing Sand Depth

Casing and Tubing	Used in Drilling	Left in Well	Packers
Size			Kind of Packer
16			
13 5/8	97	97	
10	2449	2449	Size of
8 1/4			
6 5/8			Depth set
5 3/16	6547	1097	
4 1/2			
3			Perf. top 6522
2			Perf. bottom 6532
Liners Used			Perf. top <u>6522</u>
			Perf. bottom <u>6532</u>

Attach copy of cementing record. See back

CASING CEMENTED SIZE No. Ft. Date

Amount of cement used (bags)

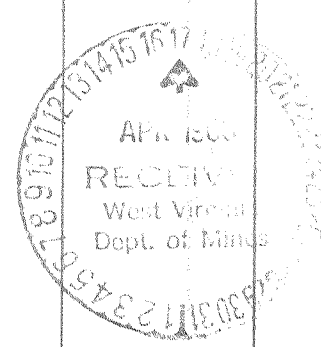
Name of Service Co. NO

COAL WAS ENCOUNTERED AT FEET INCHES

FEET INCHES FEET INCHES

FEET INCHES FEET INCHES

Formation	Color	Hard or Soft	Top	Bottom	Oil, Gas or Water	Depth	Remarks
Soil			0	15			
Sand			15	25			
Shale			25	40			
Sand			40	110			
Shale			110	130			
Sand			130	180			
Shale			180	230			
Sand			230	280			
Shale, Shells			280	350	Sl Show Oil	640	6584 661 5923
Sand			350	410			
Shale			410	430			
Sand			430	470			
Shale			470	560			
Sand			560	650			
Shale			650	770			
Sand			770	805			
Shale			805	835			
Sand			835	975			
lime Big Lime			975	1050			
Sand-Shale Big Limestone			1050	1200			
Shale-Silt			1200	4790			
Limestone Onondaga			4790	5010			
Sand Oniskany			5010	5100	Water 5030		
Limestone Helderberg; v. silt.			5100	5575			
Sand MCKEY			5575	5640			
Limestone			5640	5850			
Limestone, Anhydrite, Dolomites			5850	6940	Newburg	6584 (U.F. rep 4)	
Sand Kee Fer			6940	7000			
Shale Rose Hill			7000	7061			



TD 7061

555

Formation	Color	Hard or Soft	Top	Bottom	Oil, Gas or Water	Depth Found	Remarks
							13 3/8 casing cemented by Halliburton 3/7/68 with 75 sx regular cement
							9 5/8 casing cemented by Halliburton 3/14/68 with 760 sacs of cement 660 sx posmix and 100 sx regular
							5 " cemented by Dowell 4/8/68 with 200 sacks 50-50 Posmix

Date 4/15/68, 1968

APPROVED Belco Petroleum, Inc., Owner

By Dwight S. Weather
(Title)