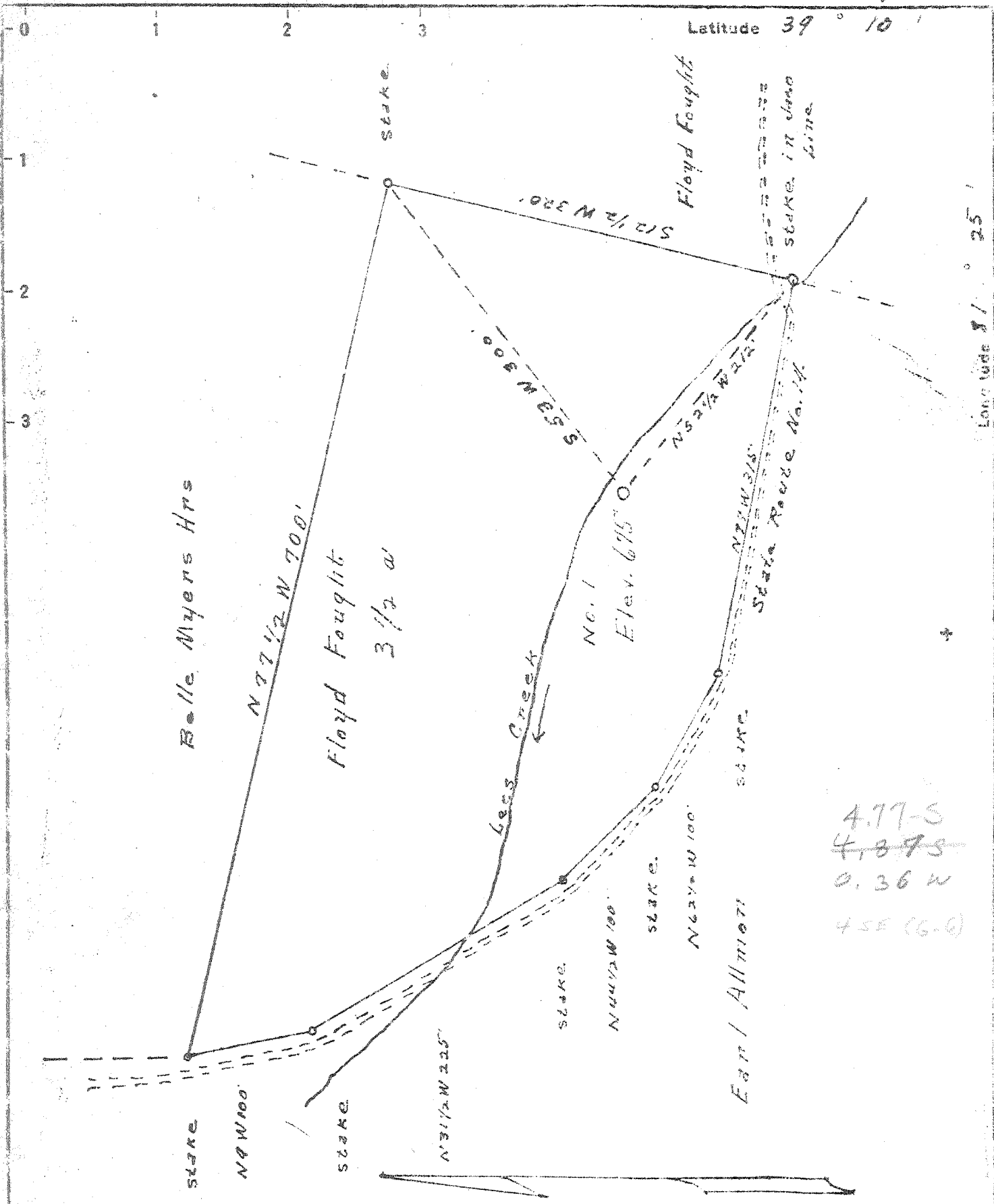


4

P



4.77-5
~~4.87-5~~
 0.36 W
 4 SE (6-0)

New Location
 Drill Deeper
 Abandonment

Company Louis Reed
 Address Elizabeth, W. Va.
 Farm Floyd Fought
 Tract _____ Acres 3 1/2 Lease No. _____
 Well (Farm) No. 1 Serial No. _____
 Elevation (Spirit Level) 675'
 Quadrangle Elizabeth - WC
 County Wirt District New Ark
 Engineer Ronald W. Morris
 Engineer's Registration No. 1653
 File No. _____ Drawing No. _____
 Date 11-27-51 Scale 1" = 100'

STATE OF WEST VIRGINIA
 DEPARTMENT OF MINES
 OIL AND GAS DIVISION
 CHARLESTON

WELL LOCATION MAP
 FILE NO. Wirt-297

+ Denotes location of well on United States Topographic Maps, scale 1 to 62,500, latitude and longitude lines being represented by border lines as shown.

- Denotes one inch spaces on border line of original tracing.

No drillers record filed

Deep Well

Dry in Oriskany

comp. Diller

TD 5507'

(4/23/52)

5507

675

-4832



North arrow
Scale 1" = 1000'

Geological cross-section showing the Oriskany formation. The section is oriented North-South. The Oriskany is shown as a large, roughly triangular area with dashed lines. The base of the Oriskany is at the bottom, and the apex is at the top right. The Oriskany is shown as a large, roughly triangular area with dashed lines. The base of the Oriskany is at the bottom, and the apex is at the top right. The Oriskany is shown as a large, roughly triangular area with dashed lines. The base of the Oriskany is at the bottom, and the apex is at the top right.

Geological cross-section showing the Oriskany formation. The section is oriented North-South. The Oriskany is shown as a large, roughly triangular area with dashed lines. The base of the Oriskany is at the bottom, and the apex is at the top right. The Oriskany is shown as a large, roughly triangular area with dashed lines. The base of the Oriskany is at the bottom, and the apex is at the top right.



STATE OF WEST VIRGINIA
DEPARTMENT OF MINES
OIL AND GAS DIVISION

WV 2

WELL RECORD

Oil or Gas Well: Dry
(KIND)

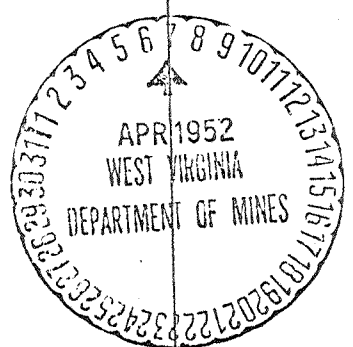
Permit No. WIR - 297.P

Company Louis Reed and Associates
Address Elizabeth, W. Va.
Farm Floyd Fought Acres 35
Location (waters) Lee Creek
Well No. 1 Elev. 675
District Newark County Wirt
The surface of tract is owned in fee by Floyd Fought
Address Elizabeth, W. Va.
Mineral rights are owned by Floyd Fought
Address Elizabeth, W. Va.
Drilling commenced January 4, 1952
Drilling completed April 4, 1952
Date Shot From To
With
Open Flow /10ths Water in Inch
/10ths Merc. in Inch
Volume Cu. Ft.
Rock Pressure lbs. hrs.
Oil bbls., 1st 24 hrs.
Fresh water feet feet
Salt water feet feet

Casing and Tubing	Used in Drilling	Left in Well	Packers
Size			Kind of Packer
16	27		
18 3/8	225		
10 3/4	1081		Size of
8 5/8	1949		
6 7/8	5235		Depth set
5 3/16			
3			Perf. top
2			Perf. bottom
Liners Used			Perf. top
			Perf. bottom

CASING CEMENTED SIZE No. Ft. Date
COAL WAS ENCOUNTERED AT FEET INCHES
FEET INCHES FEET INCHES
FEET INCHES FEET INCHES

Formation	Color	Hard or Soft	Top	Bottom	Oil, Gas or Water	Depth Found	Remarks
Soil			0	10			
Gravel			10	23			
Blue			23	35			
Rock	Red		35	66	Water	50	
Lime			66	76			
Rock	Red		76	130			
Lime			130	150			
Slate	White		150	175			
Sand			175	208			
Rock	Red		208	214			
Lime			214	250			
Rock	Red		250	262			
Lime			262	314			
Rock	Red		314	342			
Lime			342	370			
Rock	Red		370	432			
Slate	Black		432	472			
Rock	Red		472	485			
Lime			485	510			
Sand			510	535			
Slate			535	584			
Rock	Red		584	600			
Lime			600	690			
Rock	Red		690	700			
Gritty Lime			700	715			
Rock	Red		715	820			
Slate			820	850			
Rock	Red		850	916			
Lime			916	956			
Sand			956	981			
Slate	Black		981	1007			
Rock	Red		1007	1035			
Sand			1035	1165			
Slate	Black		1165	1232			
Sand			1232	1248	Oil - Show	1235	
Slate			1248	1286			
Sand			1286	1382			
Slate & Shell			1382	1432			
Sand			1432	1462			
Slate	Black		1462	1514			



(Over)

Formation	Color	Hard or Soft	Top	Bottom	Oil, Gas or Water	Depth Found	Remarks
Sand	WT		1514	1739	Water	1584	
Blue Monday			1739	1766	Water	1718	Hole full
Big Lime			1766	1800			
Lime Gritty			1800	1825			
Slate			1825	1838			
Sand			1838	1864			
Slate			1864	1887			
Lime Gritty			1887	2000			
Slate & Shell			2000	2266			
Shale	Brown		2266	2276			
Berea Shell			2276	2278			
Slate & Shell			2278	3530			
Shale	Brown		3530	3600			
Slate & Shell			3600	3872			
Shale	Brown		3872	4009			
Slate			4009	4085			
Shale	Brown		4085	4296			
Slate	White		4296	4752			
Shale	Brown		4752	5030			
Slate	White		5030	5120			
Shale	Brown		5120	5210			
Corniferous Lime			5210	5415			
Oriskany Sand			5415	5445			
Lime			5445	5507	TD		

HDBC

Date April 5, 1952

APPROVED Louis Reed, Owner

By _____ (Title)