

WW-7
8-30-06

105 00258 P
RECEIVED
Office of Oil and Gas
SEP 06 2016

WV Department of
Environmental Protection



West Virginia Department of Environmental Protection
Office of Oil and Gas

WELL LOCATION FORM: GPS

API: 105-00258 WELL NO.: 7248

FARM NAME: Thompson, I. T.

RESPONSIBLE PARTY NAME: Columbia Gas Transmission, LLC

COUNTY: Wirt DISTRICT: Tucker

QUADRANGLE: Rockport, WV

SURFACE OWNER: Christopher L. Thompson

ROYALTY OWNER: N/A - storage lease 1044289-000

UTM GPS NORTHING: 4320296.6 m

UTM GPS EASTING: 450273.7 m GPS ELEVATION: 319.5 m

The Responsible Party named above has chosen to submit GPS coordinates in lieu of preparing a new well location plat for a plugging permit or assigned API number on the above well. The Office of Oil and Gas will not accept GPS coordinates that do not meet the following requirements:

- Datum: NAD 1983, Zone: 17 North, Coordinate Units: meters, Altitude: height above mean sea level (MSL) – meters.
- Accuracy to Datum – 3.05 meters
- Data Collection Method:

Survey grade GPS : Post Processed Differential


Real-Time Differential

Mapping Grade GPS : Post Processed Differential

Real-Time Differential

- Letter size copy of the topography map showing the well location.**

I the undersigned, hereby certify this data is correct to the best of my knowledge and belief and shows all the information required by law and the regulations issued and prescribed by the Office of Oil and Gas.


Signature

Senior Well Services Engineer

Title

9/6/2016

Date

10/28/2016

10500258P

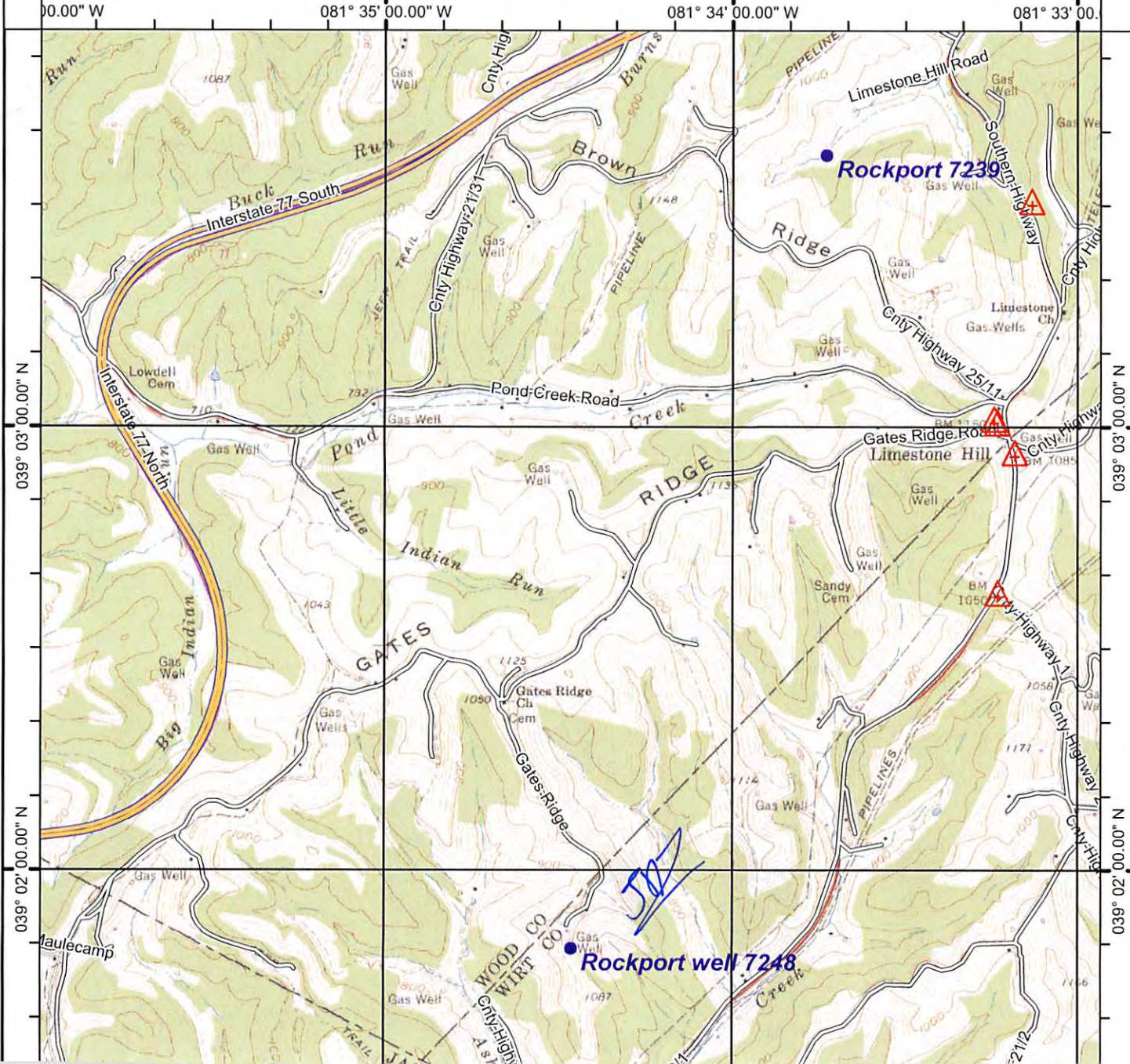
(LUBECK)



ROCKPORT QUADRANGLE
WEST VIRGINIA
TOPOGRAPHIC SERIES

(KANAWHA)

081° 35' 59.89" W (SOUTH PARKERSBURG) 081° 32' 55.65" W
039° 03' 53.92" N 039° 03' 53.92" N



(POND CREEK)

(ELIZABETH)

039° 02' 00.00" N 039° 02' 00.00" N