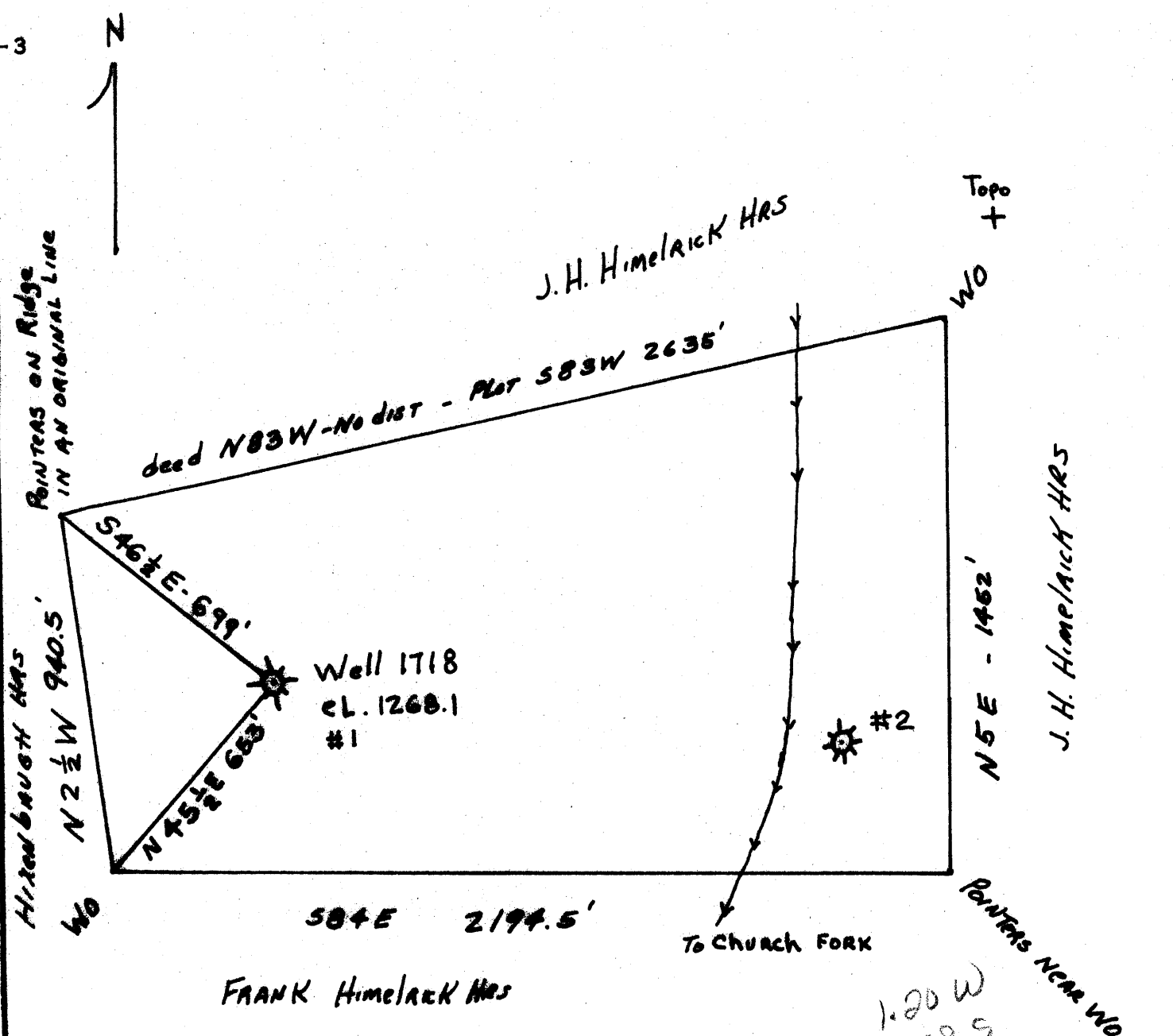


0 1 2 3 LATITUDE 39° 45'

1 2 3 LONGITUDE 80° 25'



COAL OWNED BY CONSOLIDATED COAL CO.
MONONGAHELAN, WVA

- NEW LOCATION
- RECONDITION
- DRILL DEEPER
- ABANDONMENT

"I, the undersigned, hereby certify that this map is correct to the best of my knowledge and belief and shows all the information required by paragraph 6 of the rules and regulations of the oil and gas section of the mining laws of West Virginia."
 Minimum degree of accuracy is one part in 200'

Signed A. T. Galschian WVA 4691

COMPANY HUNDRED GAS COMPANY
 ADDRESS HUNDRED, WEST VIRGINIA
 FARM J. H. HIMELRICK HRS
 MAP - ACRES 68 LEASE NO. -
 WELL (FARM) NO. 1 SERIAL NO. 1718
 ELEVATION (SPIRIT LEVEL) 1268.1
 QUADRANGLE MANNINGTON - NW
 COUNTY WETZEL DISTRICT CHURCH
 POINT OF PROVEN ELEVATION UE 1053.23
 FILE NO. FBK A PGF 16 DRAWING NO. -
 DATE 12-27-65 SCALE 1" = 200'

STATE OF WEST VIRGINIA
 DEPARTMENT OF MINES
 OIL AND GAS DIVISION
 CHARLESTON
 WELL LOCATION MAP
 FILE NO. WET-1195-A

+ DENOTES LOCATION OF WELL ON UNITED STATES TOPOGRAPHIC MAPS, SCALE 1 TO 62,500, LATITUDE AND LONGITUDE LINES BEING REPRESENTED BY BORDER LINES AS SHOWN.
 - DENOTES ONE INCH SPACES ON BORDER LINE OF ORIGINAL TRACING.