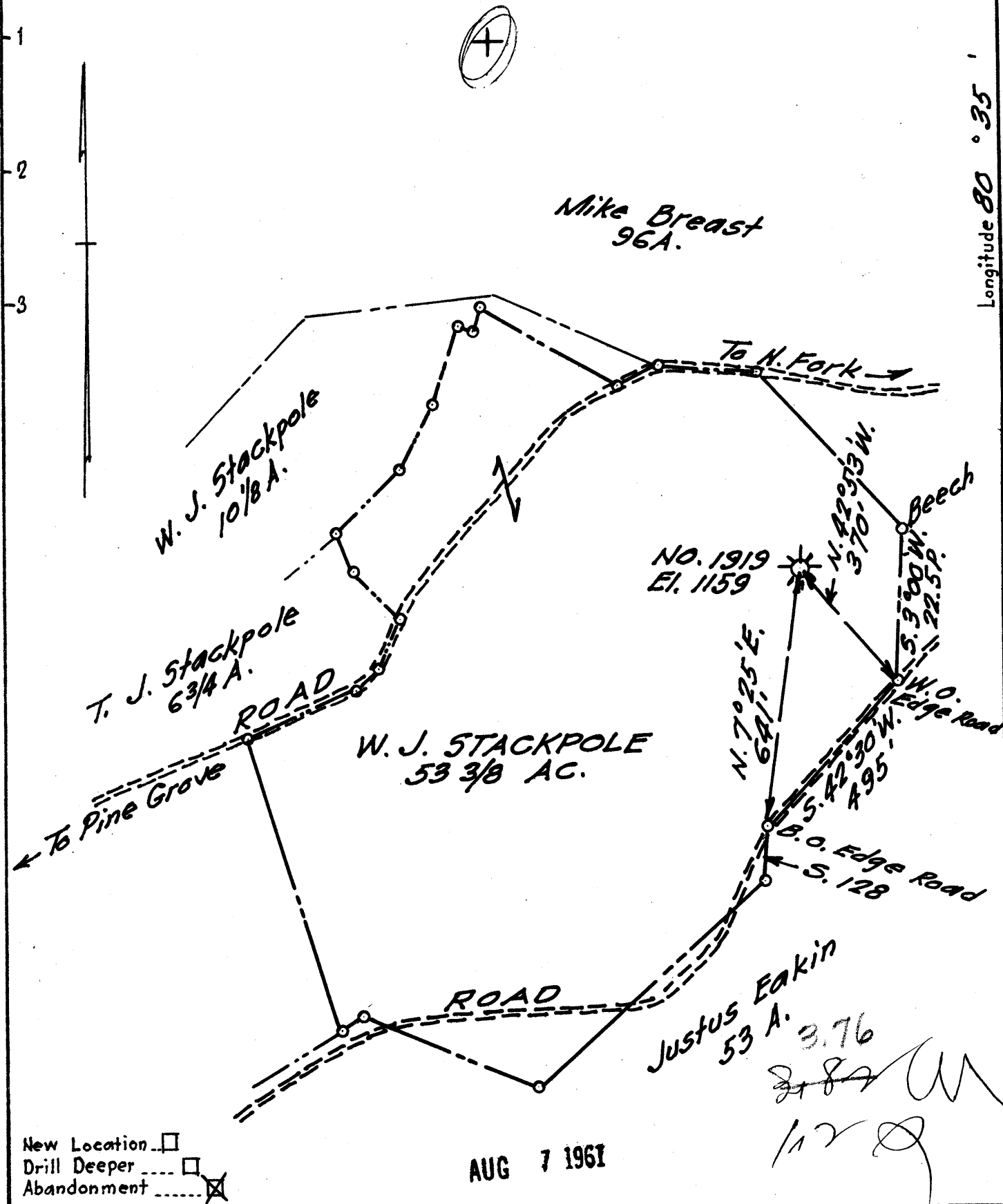


Latitude 39 ° 35 '

Longitude 80 ° 35 '



New Location
 Drill Deeper
 Abandonment

AUG 7 1961

3.76
~~2.87~~ W
 1.2 Q

Company A. M. Snider
 Address 60 Sunset Dr., Fairmont, W. Va
 Farm W. J. Stackpole
 Tract _____ Acres 53 3/8 Lease No. _____
 Well (Farm) No. _____ Serial No. 1919
 Elevation (Spirit Level) 1159
 Quadrangle Littleton
 County Wetzel District Grant
 Engineer Morris H. Highman
 Engineer's Registration No. 1868
 File No. A.M.S. Drawing No. 1
 Date Apr. 24, 1958 Scale 1" = 20 P.

STATE OF WEST VIRGINIA
 DEPARTMENT OF MINES
 OIL AND GAS DIVISION
 CHARLESTON

WELL LOCATION MAP
 FILE NO. WET-1136-A

+ Denotes location of well on United States Topographic Maps, scale 1 to 62,500, latitude and longitude lines being represented by border lines as shown.
 - Denotes one inch spaces on border line of original tracing.

W. J. STACKPOLE No. 1919 - A. M. SNIDER - WET-1136-A