

0 1 2 3 Latitude 9° 15'

1
2
3 Longitude 80° 25'

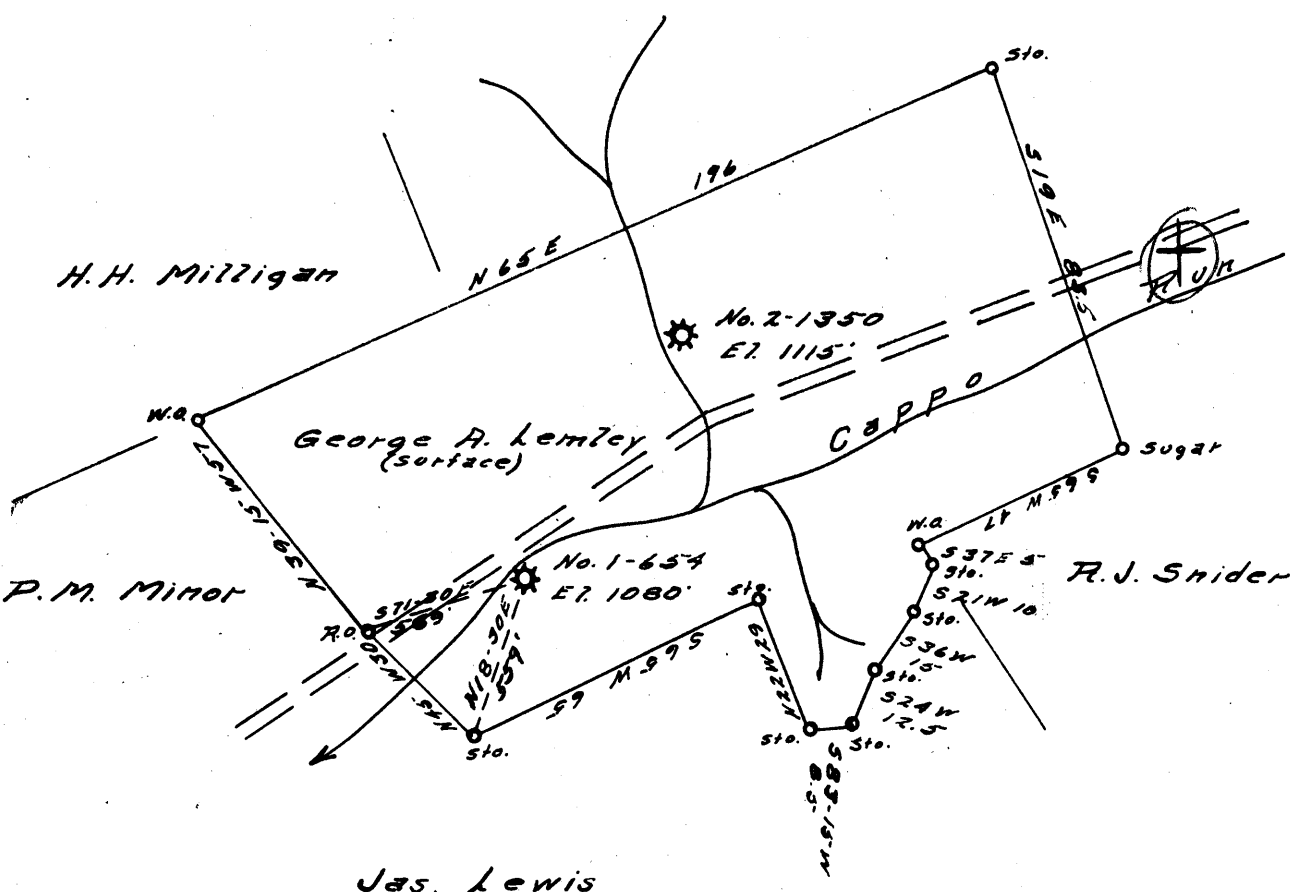
W. E. Johnson

H. H. Milligan

George A. Lemley (surface)

P. M. Minor

Jas. Lewis



NOV 1 1959

0.94
0.98 W
4.5
3.46

New Location...
Drill Deeper...
Abandonment...

Company CARNEGIE NATURAL GAS
 Address PITTSBURGH Pa.
 Farm JOHN HOSTUTLER
 Tract _____ Acres 85 Lease No. E9893-72
 Well (Farm) No. 1 Serial No. E-654
 Elevation (Spirit Level) 1080'
 Quadrangle MANNINGTON NW
 County WETZEL District CHURCH
 Engineer John A. [Signature]
 Engineer's Registration No. 1850
 File No. _____ Drawing No. _____
 Date 9-30-59 Scale 1" = 40 Feet

STATE OF WEST VIRGINIA
DEPARTMENT OF MINES
OIL AND GAS DIVISION
CHARLESTON

WELL LOCATION MAP
FILE NO. WET-1102-A

+ Denotes location of well on United States Topographic Maps, scale 1 to 62,500, latitude and longitude lines being represented by border lines as shown.
- Denotes one inch spaces on border line of original tracing.

JOHN HOSTUTLER No. 1 (E-654) - CARNEGIE N.G. Co. - WET-1102-A