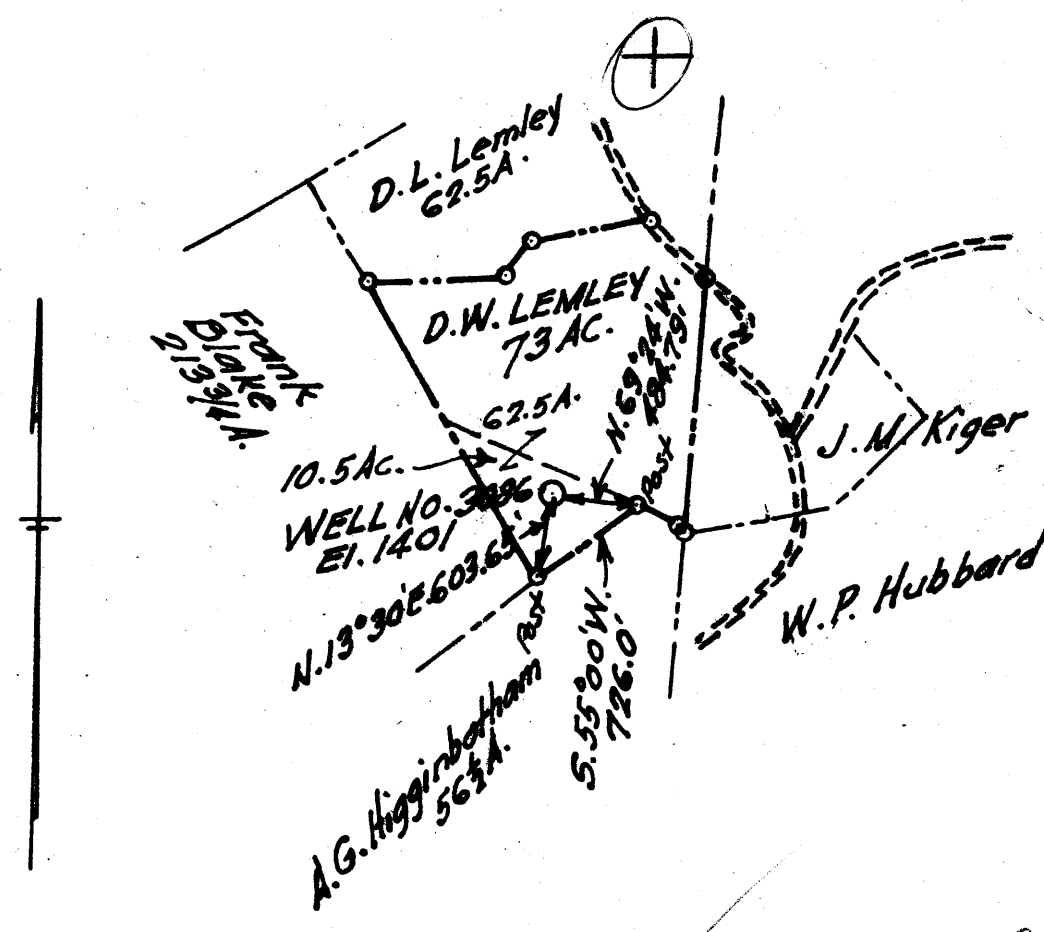


Latitude $7^{\circ} 40'$

Longitude $80^{\circ} 30'$



New Location
 Drill Deeper
 Abandonment

MAR 15 1959

3.54
~~3.57 W~~
 4.08
 3.99

Company A. M. Snider
 Address 60 Sunset Dr., Fairmont, W. Va.
 Farm D. W. Lemley
 Tract _____ Acres 73 Lease No. _____
 Well (Farm) No. 3086 Serial No. _____
 Elevation (Spirit Level) El. 1401
 Quadrangle Littleton
 County Wetzel District Grant
 Engineer Marion H. Helghman
 Engineer's Registration No. 1868
 File No. A.M.S. Drawing No. 6
 Date Sept. 23, 1958 Scale 1" = 80 P.

STATE OF WEST VIRGINIA
 DEPARTMENT OF MINES
 OIL AND GAS DIVISION
 CHARLESTON

WELL LOCATION MAP
 FILE NO. Wet-1089-A

+ Denotes location of well on United States Topographic Maps, scale 1 to 62500, latitude and longitude lines being represented by border lines as shown.

- Denotes one inch spaces on border line of original tracing.