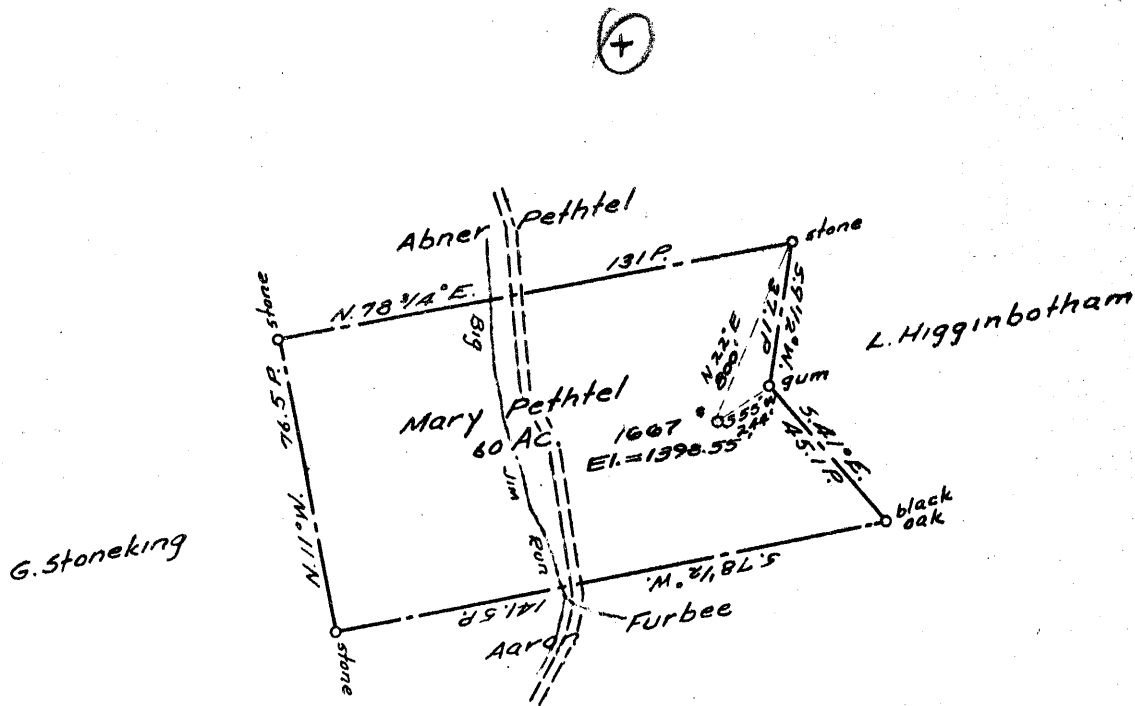


LATITUDE 39 ° 40 ' 1
 LONGITUDE 80 ° 25 ' 1



COAL OWNED BY _____

NEW LOCATION.....
 DRILL DEEPER.....
 ABANDONMENT.....

OCT 24 1955
 3.74
 3.8 W
 3.52 3.6

COMPANY The Manufacturers Light & Heat
 ADDRESS 800 Union Trust Bldg. Pgh. Pa.
 FARM Mary Pethtel
 TRACT _____ ACRES 60 LEASE NO. 27AA
 WELL (FARM) No. 1 SERIAL No. 1667
 ELEVATION (SPIRIT LEVEL) 1398.55'
 QUADRANGLE Mannington
 COUNTY Wetzel DISTRICT Church
 ENGINEER Robert McNeill
 ENGINEER'S REGISTRATION No. 361 E
 FILE No. _____ DRAWING No. Y-15-265
 DATE 29 June 1955 SCALE 1" = 800'

STATE OF WEST VIRGINIA
 DEPARTMENT OF MINES
 OIL AND GAS DIVISION
 CHARLESTON
WELL LOCATION MAP

File No. Wet-1018-A

+ DENOTES LOCATION OF WELL ON UNITED STATES TOPOGRAPHIC MAPS, SCALE 1 TO 62,500. LATITUDE AND LONGITUDE LINES BEING REPRESENTED BY BORDER LINES AS SHOWN.
 - DENOTES ONE INCH SPACES ON BORDER LINE OF ORIGINAL TRACING.

MARY PETHTEL No. 1 (1667) - M, L. & H. Co. - WET-1018-A



STATE OF WEST VIRGINIA
DEPARTMENT OF MINES
OIL AND GAS DIVISION

1447

WELL RECORD

Quadrangle
Permit No. 108A

Oil or Gas Well Gas
(KIND)

Company THE MANUFACTURERS LIGHT AND HEAT COMPANY
Address 800 Union Trust Bldg., Pgh., Penna.
Farm Mary C. Pethel Acres 60
Location (waters)
Well No. 1667 Elev. 1398.55'
District Church County Wetzel
The surface of tract is owned in fee by
Address
Mineral rights are owned by
Address
Drilling commenced December 12, 1913
Drilling completed January 24, 1914
Date Shot From To
With
Open Flow /10ths Water in Inch
 /10ths Merc. in Inch
Volume Cu. Ft.
Rock Pressure 580 lbs. hrs.
Oil bbls., 1st 24 hrs.
Fresh water feet feet
Salt water feet feet

Casing and Tubing	Used in Drilling	Left in Well	Packers
Size			Kind of Packer
16			
13			
10			Size of <u>6 5/8 x 3</u>
8 1/4	<u>1573</u>	<u>1573</u>	
6 5/8	<u>2304</u>	<u>2304</u>	Depth set <u>2361</u>
5 3/16			
3		<u>2445</u>	Perf. top
2			Perf. bottom
Liners Used			Perf. top
			Perf. bottom

CASING CEMENTED SIZE No. Ft. Date

COAL WAS ENCOUNTERED AT 1079 FEET INCHES
 FEET INCHES FEET INCHES
 FEET INCHES FEET INCHES

Formation	Color	Hard or Soft	Top	Bottom	Oil, Gas or Water	Depth Found	Remarks
Pittsburgh Coal			1079	1089			
Little Dunkard			1470	1500			
Big Dunkard			1555	1590			
Gas Sand			1705	1785			
1st Salt Sand			1825	1940			
2nd Salt Sand			2030	2125			
Little Lime			2245	2265			
Pencil Cave			2265	2280			
Big Lime			2280	2357			
Big Injun			2357				
Total Depth			2438				



JAN 23 1956

