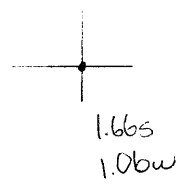


39°42'30"

Latitude

80°25'00"

Longitude



**Topo Location**

7.5' Loc. \_\_\_\_\_ 15' Loc. \_\_\_\_\_  
 \_\_\_\_\_ (calc.) \_\_\_\_\_

Company Manufacturers L&HT

Farm JH Hunsicker #1

15' Quad \_\_\_\_\_  
(sec.)

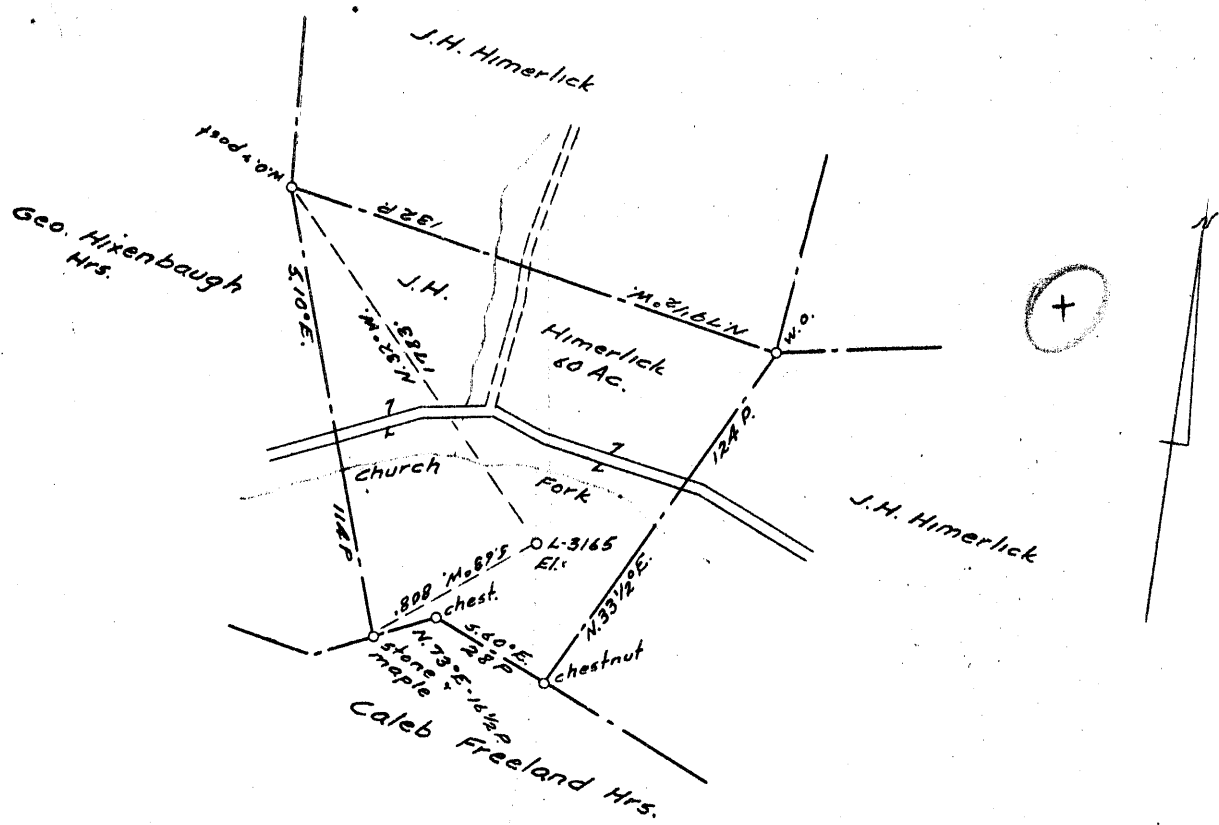
7.5' Quad Hundred

District Church

**WELL LOCATION PLAT**

County 103 Permit 31014

0 1 2 3 LATITUDE 39 0 45  
 -1  
 -2  
 -3 LONGITUDE 80 0 25



COAL OWNED BY \_\_\_\_\_  
 NEW LOCATION...   
 DRILL DEEPER...   
 ABANDONMENT...   
 JUN 19 1955

112  
 H.F. W.  
 4.68 4.76

COMPANY The Manufacturers Light & Heat Co.  
 ADDRESS 800 Union Trust Bldg. Pgh. Pa.  
 FARM J.H. Himerlick (Himerlick?)  
 TRACT \_\_\_\_\_ ACRES 60 LEASE NO. 9254  
 WELL (FARM) NO. 1 SERIAL NO. 3165  
 ELEVATION (SPIRIT LEVEL) 1177.08  
 QUADRANGLE Mannington  
 COUNTY Wetzel DISTRICT Church  
 ENGINEER Robert M. Hill  
 ENGINEER'S REGISTRATION NO. 361 F.  
 FILE NO. \_\_\_\_\_ DRAWING NO. V-15-288  
 DATE 30 June 1955 SCALE 1" = 800'

STATE OF WEST VIRGINIA  
 DEPARTMENT OF MINES  
 OIL AND GAS DIVISION  
 CHARLESTON  
**WELL LOCATION MAP**  
 FILE NO. Wet-1014-A

+ DENOTES LOCATION OF WELL ON UNITED STATES TOPOGRAPHIC MAPS. SCALE 1 TO 62,500. LATITUDE AND LONGITUDE LINES BEING REPRESENTED BY BORDER LINES AS SHOWN.  
 - DENOTES ONE INCH SPACES ON BORDER LINE OF ORIGINAL TRACING.

J.H. HIMERLICK No. 1 (3165) - M.L. & H. Co. - WET-1014-A