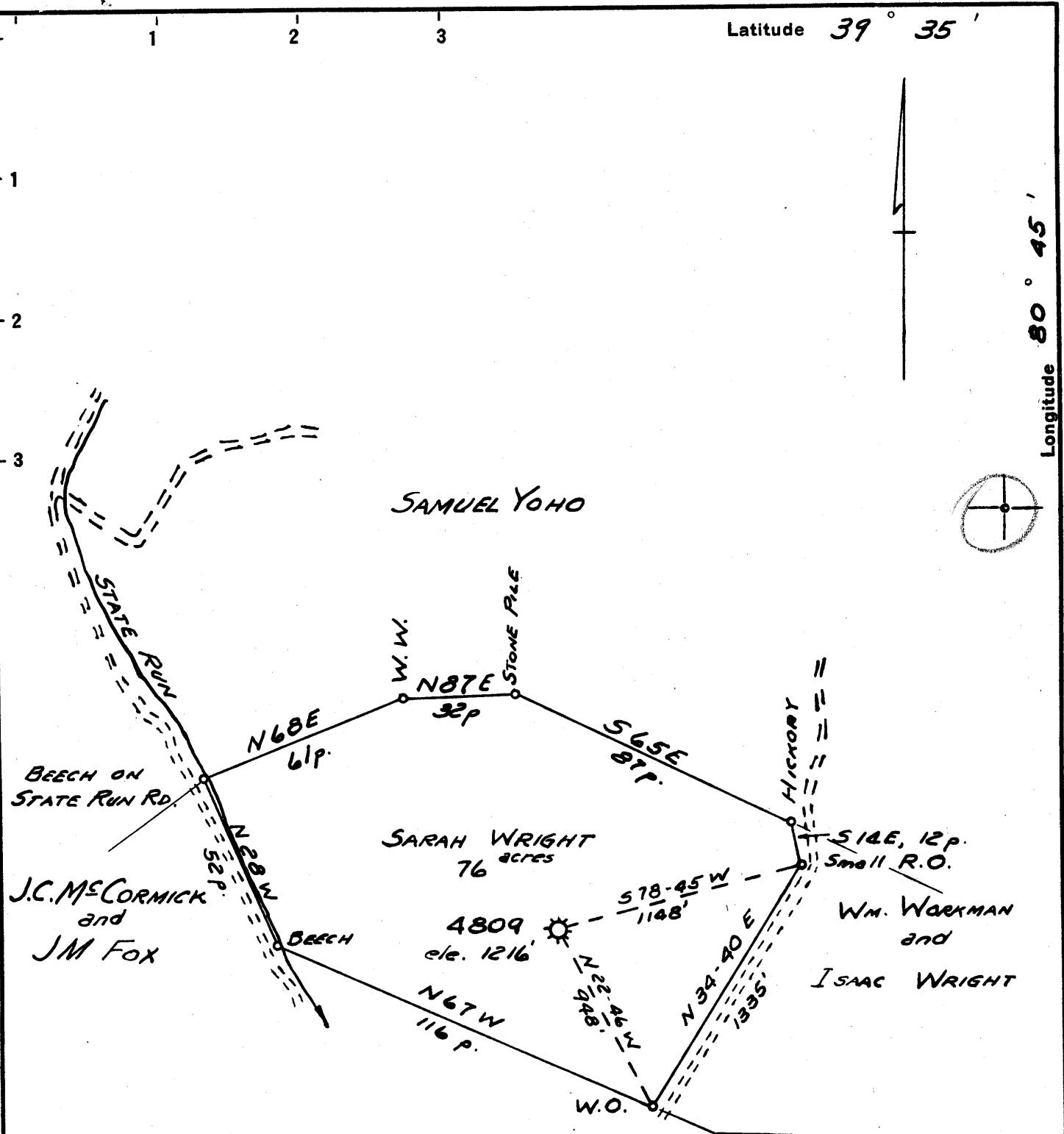


Latitude 39° 35'

Longitude 80° 45'



New Location   
 Drill Deeper   
 Abandonment



MAR 25 1953

MAP SH. 47, N7, E8 F.B. 1070, p. 24

0.38  
 2.4 W  
 3.5  
 3.78

Company HOPE NATURAL GAS CO.  
 Address CLARKSBURG, W.VA.  
 Farm SARAH WRIGHT  
 Tract \_\_\_\_\_ Acres 76 Lease No. 22109  
 Well (Farm) No. \_\_\_\_\_ Serial No. 4809  
 Elevation (Spirit Level) 1216'  
 Quadrangle NEW MARTINSVILLE  
 County WETZEL District GREENE  
 Engineer Guy H. Bradley  
 Engineer's Registration No. 2425  
 File No. \_\_\_\_\_ Drawing No. \_\_\_\_\_  
 Date 3-9-53 Scale 1" = 40 poles

STATE OF WEST VIRGINIA  
 DEPARTMENT OF MINES  
 OIL AND GAS DIVISION  
 CHARLESTON

WELL LOCATION MAP  
 FILE NO. Wet-988-A

+ Denotes location of well on United States Topographic Maps, scale 1 to 62,500, latitude and longitude lines being represented by border lines as shown.

- Denotes one inch spaces on border line of original tracing.

SARAH WRIGHT No. 4809 - HOPE No. 6, - NET-988-A



STATE OF WEST VIRGINIA  
DEPARTMENT OF MINES  
OIL AND GAS DIVISION

1416

WELL RECORD

Permit No. 988-A Oil Gas Well (KIND)

Company Hope Natural Gas Company,  
Address 445 West Main St., Clarksburg, W. Va.  
Farm Wiley Wright Acres 76  
Location (waters) (none)  
Well No. 4809 Elev. 1216  
District Green County Wetzel

The surface of tract is owned in fee by \_\_\_\_\_  
Address \_\_\_\_\_

Mineral rights are owned by \_\_\_\_\_  
Address \_\_\_\_\_

Drilling commenced June 14, 1917

Drilling completed July 24, 1917

Date Shot \_\_\_\_\_ From \_\_\_\_\_ To \_\_\_\_\_

With \_\_\_\_\_

Open Flow \_\_\_\_\_ /10ths Water in \_\_\_\_\_ Inch

\_\_\_\_\_ /10ths Merc. in \_\_\_\_\_ Inch

Volume \_\_\_\_\_ Cu. Ft.

Rock Pressure \_\_\_\_\_ lbs. \_\_\_\_\_ hrs.

Oil \_\_\_\_\_ bbls., 1st 24 hrs.

Fresh water none recorded feet \_\_\_\_\_ feet

Salt water 1860 feet \_\_\_\_\_ feet

Casing and Tubing	Used in Drilling	Left in Well	Packers
Size			
16			Kind of Packer
13			
10	320	Pulled	Size of
8 1/4	1400	1400	
6 5/8	2095	2095	Depth set
5 3/16	2138 238	2138 238	
3			Perf. top
2	2369	2369	Perf. bottom
Liners Used			Perf. top
			Perf. bottom

NOT CASING CEMENTED \_\_\_\_\_ SIZE \_\_\_\_\_ No. Ft. \_\_\_\_\_ Date \_\_\_\_\_

COAL WAS ENCOUNTERED AT 432 FEET 36 INCHES  
871 FEET 48 INCHES FEET INCHES  
FEET INCHES FEET INCHES

Formation	Color	Hard or Soft	Top	Bottom	Oil, Gas or Water	Depth Found	Remarks
Native coal			432	435			
Pittsburgh Coal			871	875			
Little Dunkard			1320	1348			
Big Dunkard			1343	1420			
Gas sand			1482	1505			
First Salt			1705	1780			
Second Salt			1837	1915	water	1860	
Maxon			1975	2038			
Little Lime			2050	2058			
Pencil cave			2058	2070			
Big Lime			2070	2140			
BIG INJUN			2140		gas	2156 2240	
Total depth				2240			

