

Latitude

Longitude

2.85 s
1.41 w

Topo Location

7.5' Loc. _____ 15' Loc. _____
 (calc.) _____

Company Manufact Lt + Ht

Farm MV + GH MOORE # 1824

15' Quad _____
(sec.)

7.5' Quad Glover Gap

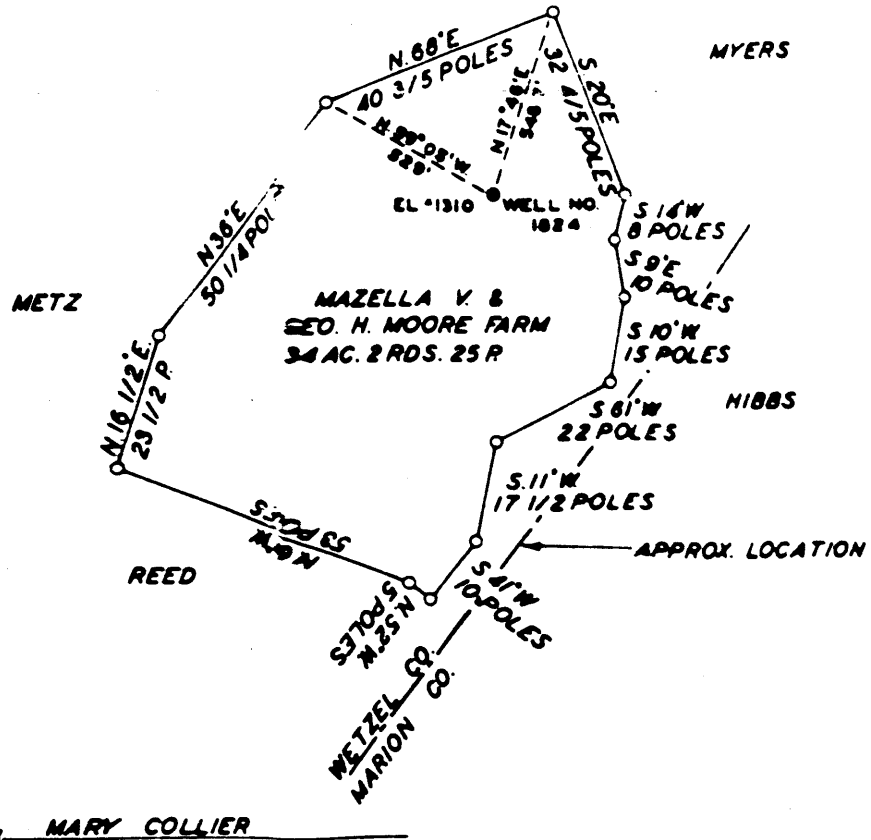
District GRANT

WELL LOCATION PLAT

County 103 Permit 30984

30984

LEGATURE 00 - 25



THE MANUFACTURERS LIGHT & HEAT	
AND UNION TRUST BLDG. 764. PA	
MAZELLA V & GEO. H. MOORE	
ACRES 35	LEASE NO. 5120
No. 1	SERIAL NO. 4824
ELEVATION 1310 ±	
MANNINGTON	

STATE OF WEST VIRGINIA
 DEPARTMENT OF MINES
 OIL AND GAS DIVISION
 CHARLESTON

WELL LOCATION MAP

FILE NO. W.C.T. - 984-A



STATE OF WEST VIRGINIA
DEPARTMENT OF MINES
OIL AND GAS DIVISION

1409

WELL RECORD

Ab 984-A

Oil or Gas Well Gas
(KIND)

Company THE MANUFACTURERS LIGHT AND HEAT COMPANY
Address 800 Union Trust Bldg., Pittsburgh, Pennsylvania
Farm M. & V. G. Moore Acres 35
Location (waters) _____
Well No. 1824 Elev. 1310'
District Grant County Wetzel
The surface of tract is owned in fee by Magella V. & Geo. H. Moore
Address R. D. 1, Woodruff, W. Va.
Mineral rights are owned by The Manufacturers Light and Heat Company
Address Pgh., Penna.
Drilling commenced January 27, 1915
Drilling completed April 2, 1915
Date Shot _____ From _____ To _____
With _____

Casing and Tubing	Used in Drilling	Left in Well	Packers
Size			Kind of Packer
16			
13			
10	<u>256'</u>		Size of <u>6 5/8 x 4</u>
8 3/4	<u>1460'</u>	<u>1460'</u>	
6 3/4	<u>2008'</u>	<u>2008'</u>	Depth set <u>2036'</u>
5 3/16			
3			Perf. top
2			Perf. bottom
Liners Used			Perf. top
			Perf. bottom

Open Flow _____ /10ths Water in _____ Inch
_____ /10ths Merc. in _____ Inch
Volume _____ Cu. Ft.
Rock Pressure 165 lbs. 2 hrs.
Oil _____ bbls., 1st 24 hrs.
Fresh water _____ feet _____ feet
Salt water _____ feet _____ feet

CASING CEMENTED _____ SIZE _____ No. Ft. _____ Date _____
COAL WAS ENCOUNTERED AT 968' FEET _____ INCHES
_____ FEET _____ INCHES FEET _____ INCHES
_____ FEET _____ INCHES FEET _____ INCHES

Formation	Color	Hard or Soft	Top	Bottom	Oil, Gas or Water	Depth Found	Remarks
Water			60				Water at 1724, 1 1/2 bailer per hour
Bluff Sand (White)			700	720			
Pittsburgh Coal			968	972			Completion Report 4/2/15
Little Dunkard			1340	1355			
Big Dunkard (Gray, Hard)			1425	1455			
1st Salt Sand (White, Hard)			1700	1775			
2nd Salt Sand (Hard)			1840	1980			
Hole full water			1815				
Maxon Sand (Hard)			2097	2170			
Gas at			2100				
Big Lime			2175	2253			Open Flow Test
Big Injun (Broken)			2253	2448			
Gas at			2268				
50 ft. Sand			2910	2925			10# - 1st minute
30 ft. Sand			2950	2960			20# - 2nd minute
Gordon Stray (Hard)			3010	3035			30# - 3rd minute
Gordon Sand (Hard)			3055	3115			38# - 4th minute
4th Sand			3135	3170			45# - 5th minute
5th Sand			3190	3192			
Gas at 3192							Rock - 165 lbs. - 2 hours
5th Broken Shell							Galage 16/10 - Mercury 2"
Total Depth			3273				pipe - 700,000 cu. ft.

