

← 0.085  
75' 10" 46W  
11/18/92  
(from 88. prop map)

3945

0709

LONGITUDE

7'5 OGIS topo location

7.5' 10c	<u>0.085</u>	15' 10c	<u>0.085</u>
	<u>1.46W</u>	(calc.)	<u>1.46W</u>

Company \_\_\_\_\_

Farm \_\_\_\_\_

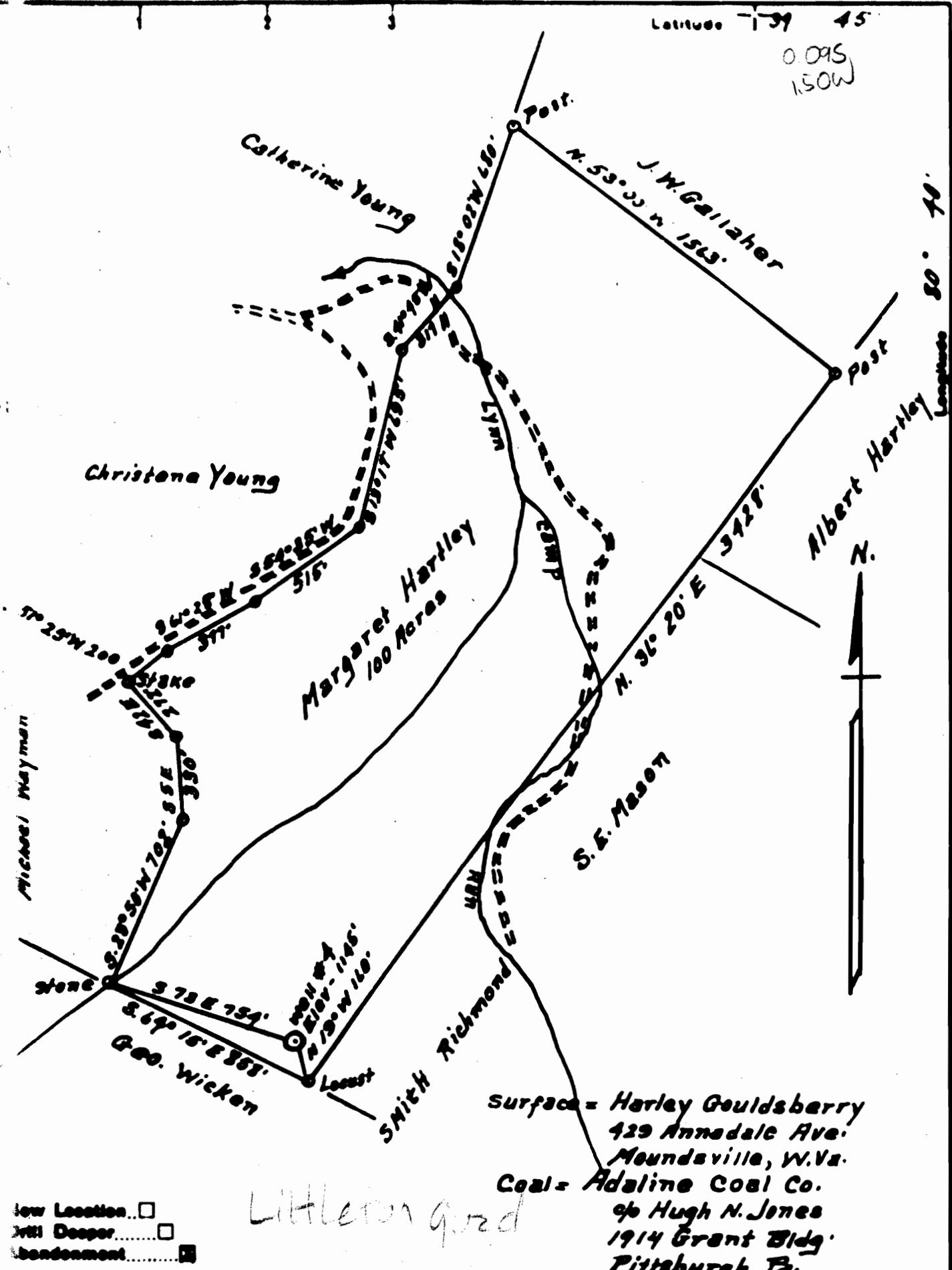
Quad Wileyville Littleton NW  
 County (Marshall)  
 District (Meade)

WELL LOCATION MAP

File No. Wetzel 976 A

actually plots in  
 Meade Dist, Marshall Co  
 (see Marshall 185A - same  
 farm)

printed from microfilm w/24X lens  
 + blown up @ 137% on Canon copier



Latitude 39 45  
 0.095  
 150W

Longitude 80 40

Surface = Harley Gouldsberry  
 429 Annedale Ave.  
 Moundsville, W.Va.  
 Coal = Adaline Coal Co.  
 of Hugh N. Jones  
 1914 Grant Bldg.  
 Pittsburgh Pa.

Littleton road

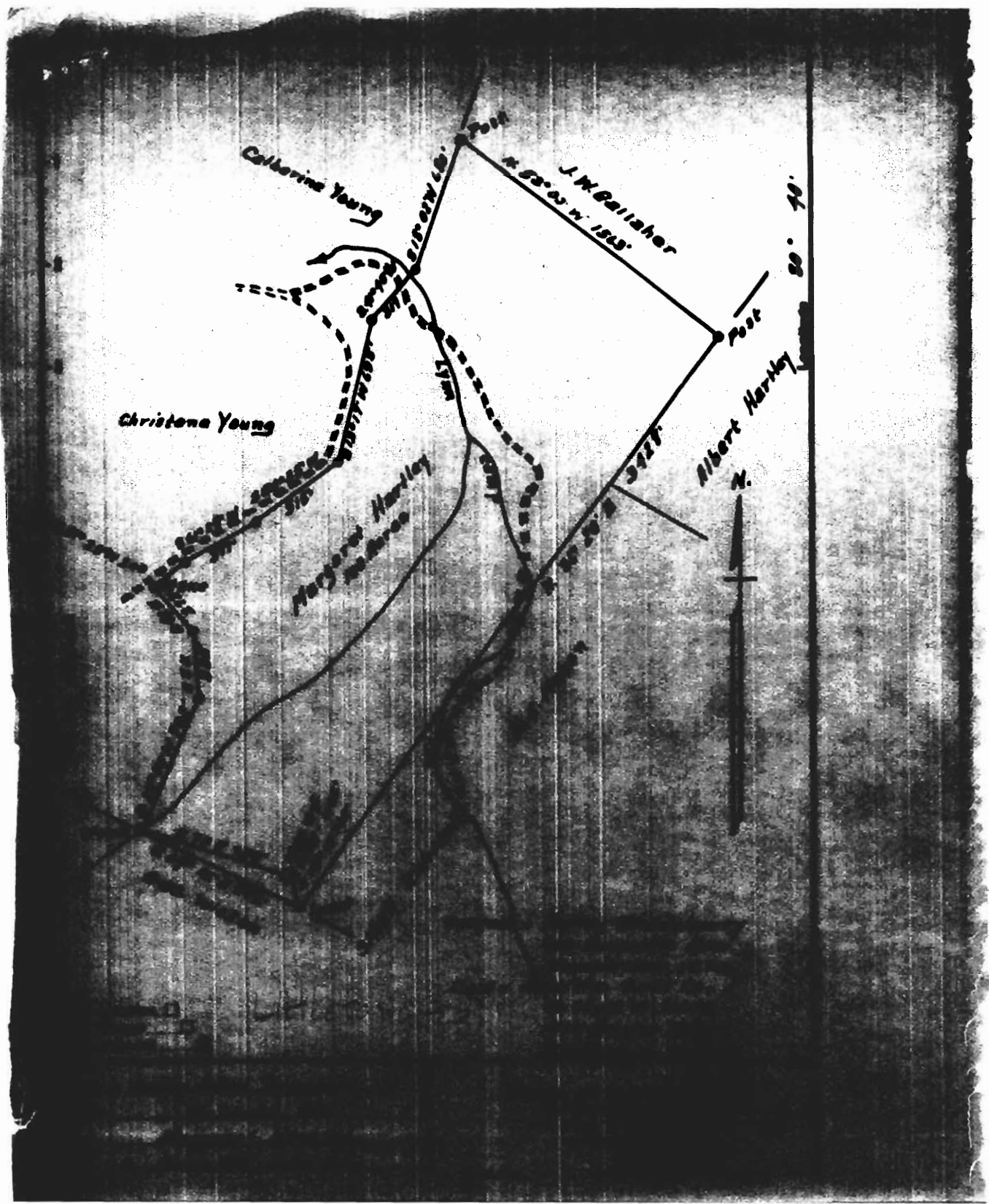
- low Location...
- with Deeper...
- bandonment...

Company	Valley Steel Products Co
Address	St. Louis, Mo.
Worm	Margaret Hartley
Acres	100
Lease No.	

STATE OF WEST VIRGINIA  
 DEPARTMENT OF MINES  
 OIL AND GAS DIVISION  
 CHARLESTON

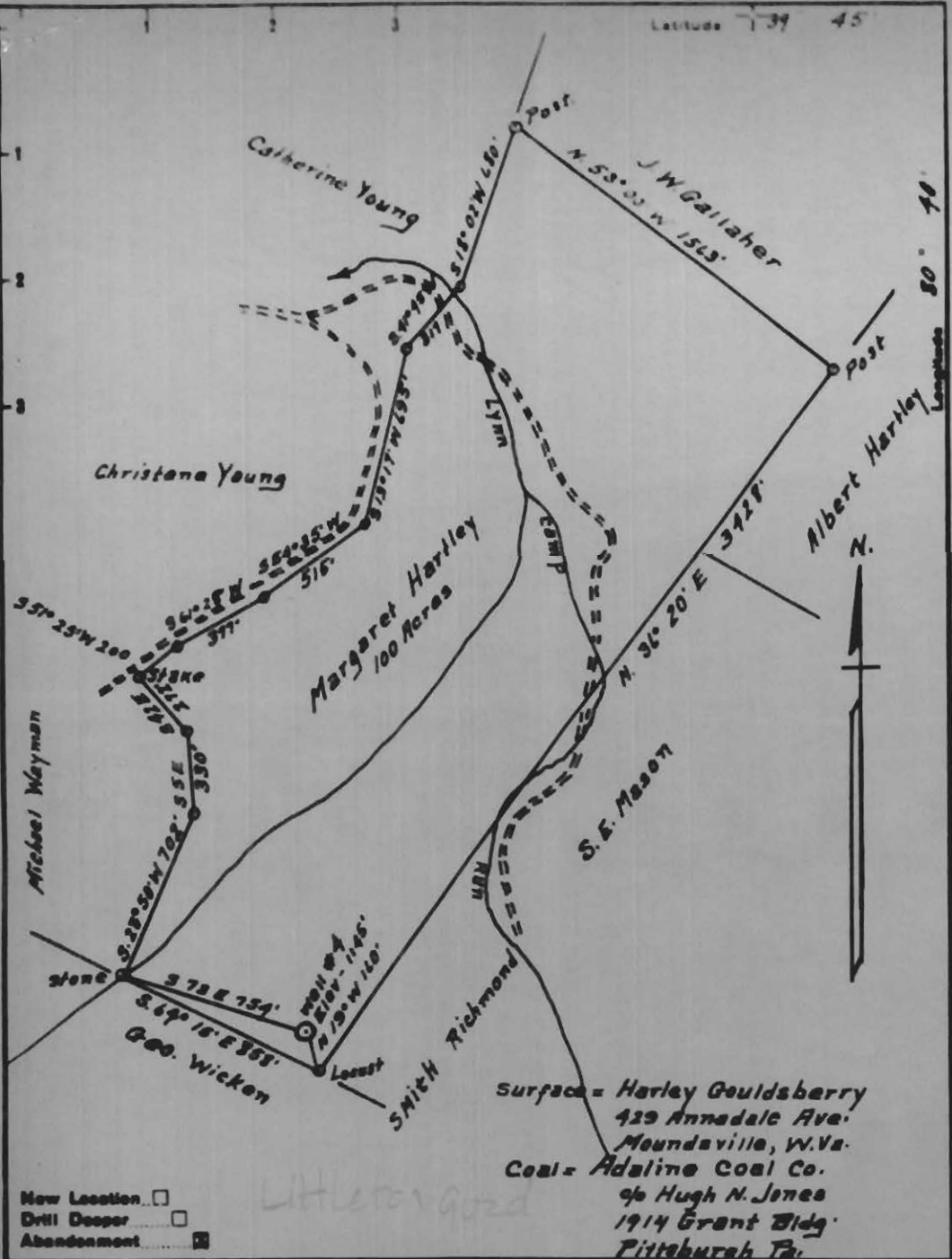
WELL LOCATION MAP

Wetzel 976 A  
 (#1 w 185A)



Latitude 39 45

Longitude 80 40



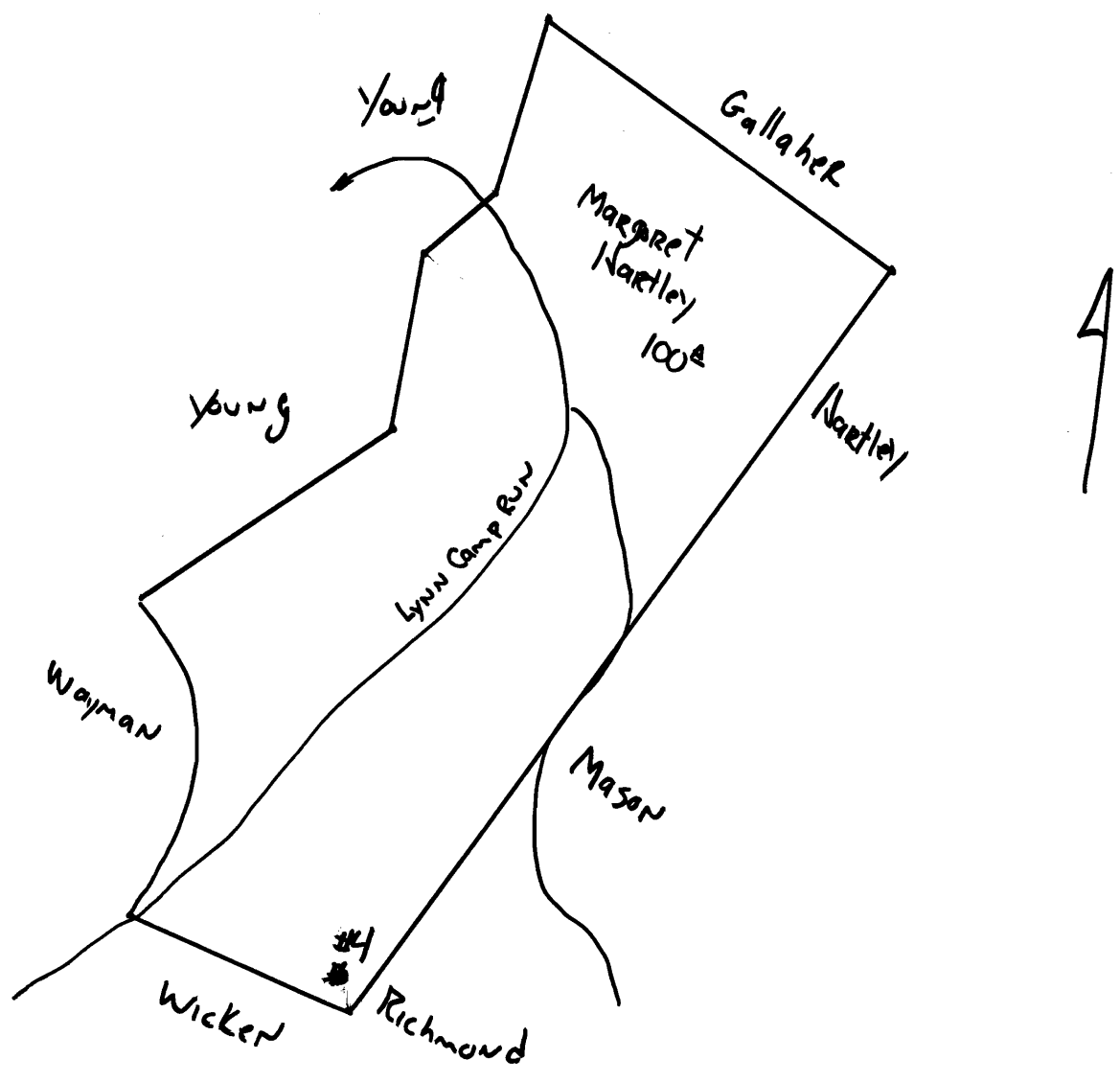
Surface = Harley Gouldsberry  
 429 Annadale Ave.  
 Moundsville, W. Va.  
 Coal = Adaline Coal Co.  
 96 Hugh N. Jones  
 1914 Grant Bldg.  
 Pittsburgh Pa.

New Location   
 Drill Deeper   
 Abandonment

Company Valley Steel Products Co  
 Address St. Louis, Mo.  
 Firm Margaret Hartley  
 Tract 1 Acres 100 Lease No. \_\_\_\_\_

STATE OF WEST VIRGINIA  
 DEPARTMENT OF MINES  
 OIL AND GAS DIVISION  
 CHARLESTON

WELL LOCATION MAP





1398

STATE OF WEST VIRGINIA  
DEPARTMENT OF MINES  
OIL AND GAS DIVISION

WELL RECORD

Permit No. 976-A

Oil or Gas Well \_\_\_\_\_ (KIND)

Company Valley Steel Product Co.  
Address St. Louis, Mo.  
Farm Margaret Hartley Acres \_\_\_\_\_  
Location (waters) \_\_\_\_\_  
Well No. Liberty Elev. \_\_\_\_\_  
District Roade County etzel  
The surface of tract is owned in fee by \_\_\_\_\_  
Address \_\_\_\_\_  
Mineral rights are owned by \_\_\_\_\_  
Address \_\_\_\_\_

Casing and Tubing	Used in Drilling	Left in Well	Packers
Size			
16			Kind of Packer
13			
10			Size of
8 3/4		1950	
6 3/4		2305	Depth set
5 3/16			
3			Perf. top
2			Perf. bottom
Liners Used			Perf. top
			Perf. bottom

Drilling commenced \_\_\_\_\_  
Drilling completed April 7, 1906  
Date Shot \_\_\_\_\_ From \_\_\_\_\_ To \_\_\_\_\_  
With \_\_\_\_\_  
Open Flow \_\_\_\_\_ /10ths Water in \_\_\_\_\_ Inch  
\_\_\_\_\_ /10ths Merc. in \_\_\_\_\_ Inch  
Volume \_\_\_\_\_ Cu. Ft.  
Rock Pressure \_\_\_\_\_ lbs. \_\_\_\_\_ hrs.  
Oil \_\_\_\_\_ bbls., 1st 24 hrs.  
Fresh water \_\_\_\_\_ feet \_\_\_\_\_ feet  
Salt water \_\_\_\_\_ feet \_\_\_\_\_ feet

CASING CEMENTED \_\_\_\_\_ SIZE \_\_\_\_\_ No. Ft. \_\_\_\_\_ Date \_\_\_\_\_

COAL WAS ENCOUNTERED AT 765 FEET 60 INCHES  
875 FEET 120 INCHES FEET INCHES  
FEET INCHES FEET INCHES

Formation	Color	Hard or Soft	Top	Bottom	Oil, Gas or Water	Depth Found	Remarks
Mapletown Coal			765	765			
Pgh Coal			875	885			
Salt.			1630	1730			
Big line			1950	1989			
" Injun			1989	2300			
Gordon Stray			2864	2869			
Gordon			2884	2899 011	2887-2895		
Total Depth.				2904			



DEC 10 1952