

39° 42' 30"

Latitude

80° 22' 30"

Longitude

+
 2.14s
 2.01w

Topo Location

7.5' Loc. _____ 15' Loc. _____
 _____ (calc.) _____

Company Santee Oil & Gas Co

Farm J W Santee # 13

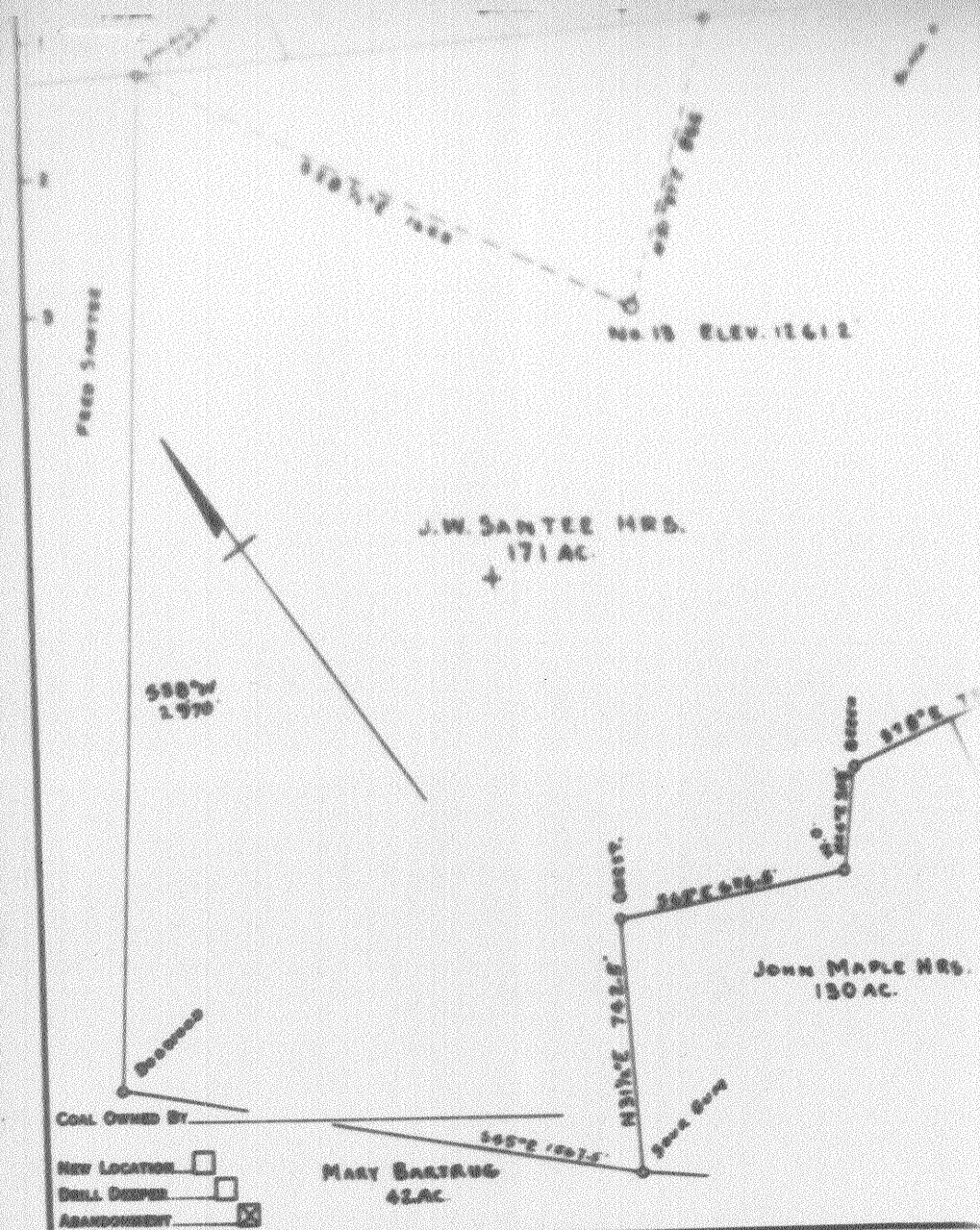
15' Quad _____
(sec.)

7.5' Quad Hundred

District Church

WELL LOCATION PLAT

County 103 **Permit** 30962



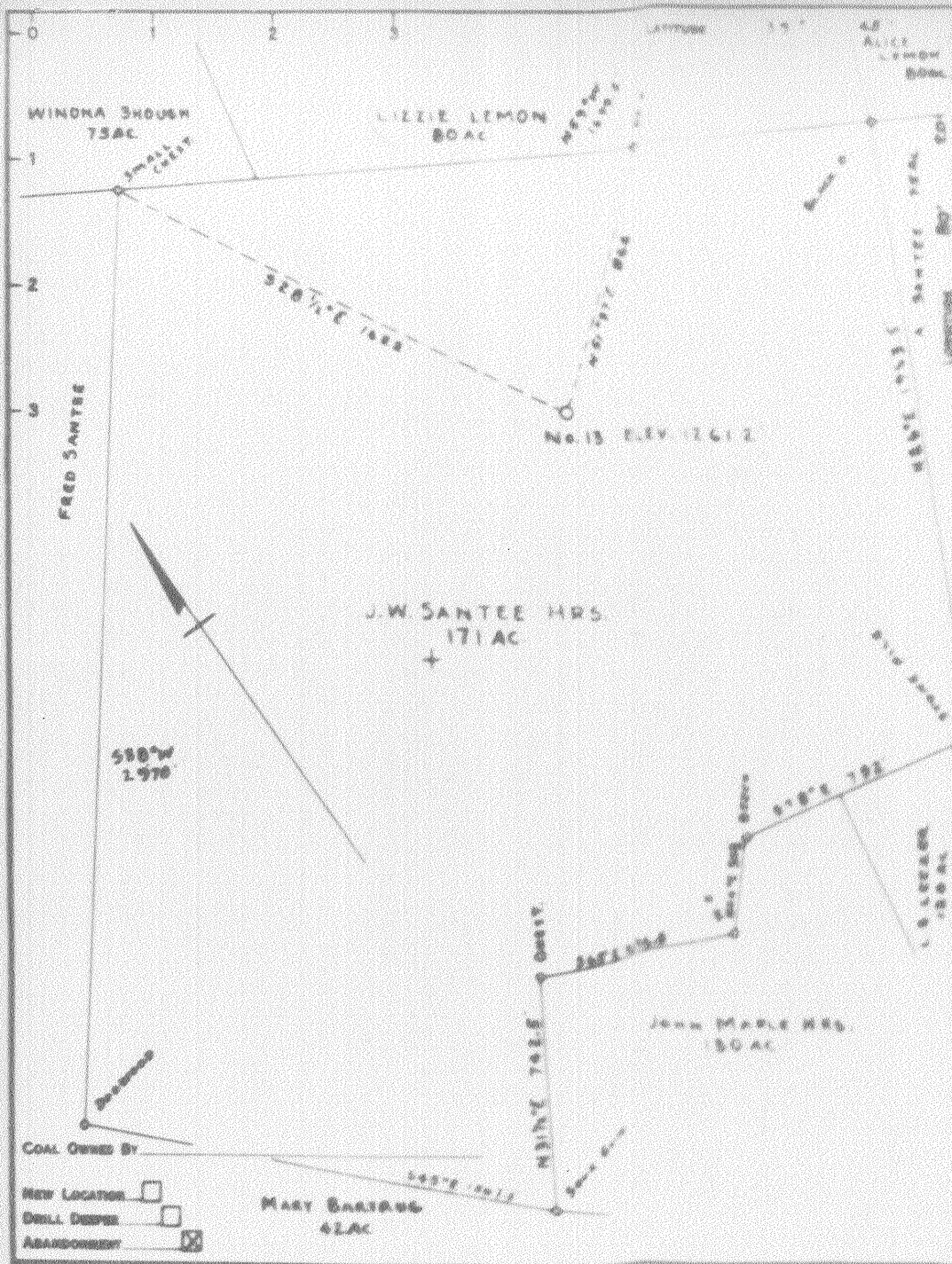
COMPANY	SANTEE OIL AND GAS Co.		
ADDRESS	HUNDRED, WVA.		
FARM	J.W. SANTEE HRS.		
TRACT	1	ACRES	171
LEASE NO.	-		
WELL (FARM) No.	13	SERIAL NO.	-
ELEVATION (SPIRIT LEVEL)	1261.2		
QUADRANGLE	MANNINGTON N.W.		
COUNTY	WETZEL	DISTRICT	CHURCH

STATE OF WEST VIRGINIA
 DEPARTMENT OF MINES
 OIL AND GAS DIVISION
 CHARLESTON

WELL LOCATION MAP

FILE No. WV-962-A

30962



COAL OWNED BY

NEW LOCATION

DRILL DEEPER

ABANDONMENT

Company SANTEE OIL AND GAS CO.

Address HUNDRED, WVA

Farm J.W. SANTEE MRS.

STATE OF WEST VIRGINIA
DEPARTMENT OF MINES
OIL AND GAS DIVISION

