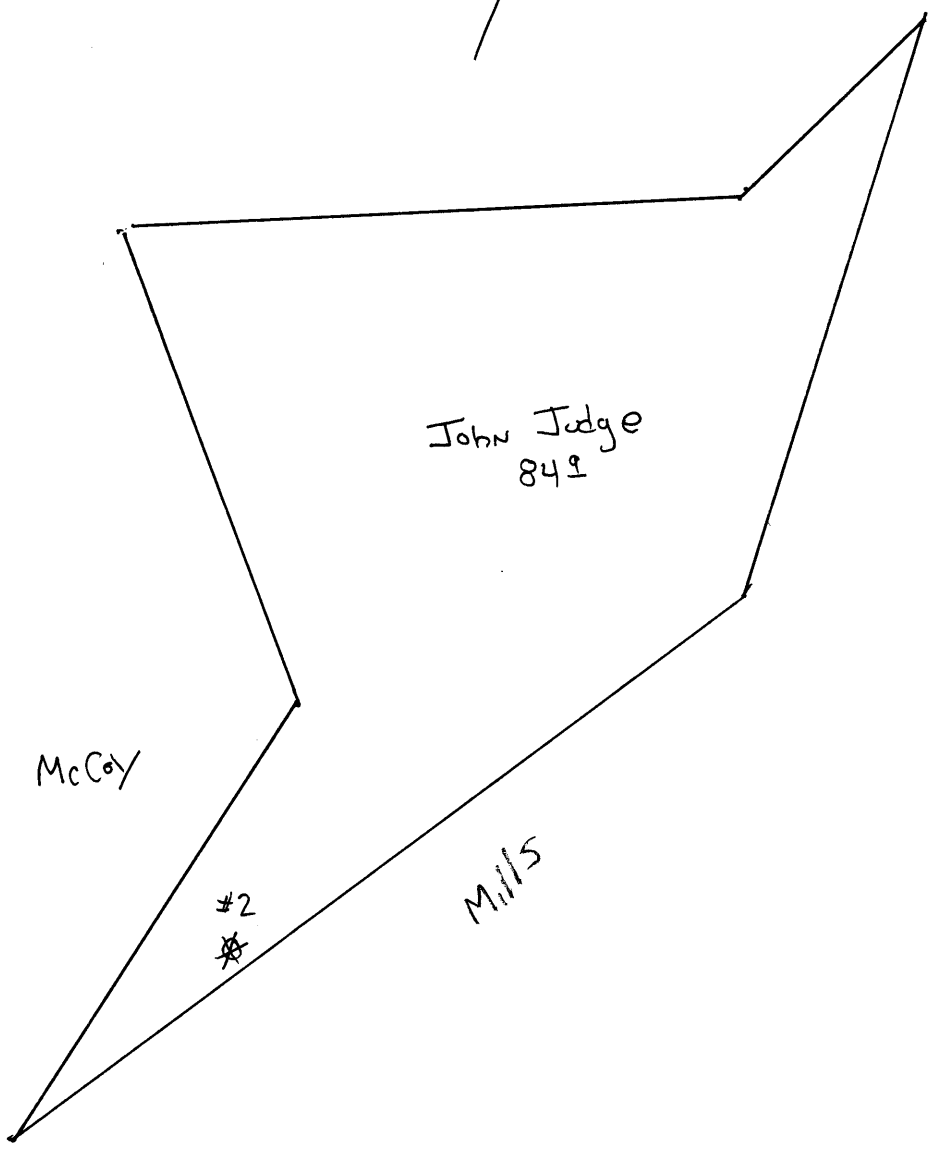


30957  
GREEN

39°35'

191+200



John Judge  
84±

McCoy

Mills

#2  
★



STATE OF WEST VIRGINIA  
DEPARTMENT OF MINES  
OIL AND GAS DIVISION

1592

WELL RECORD

Permit No. AD 957-A

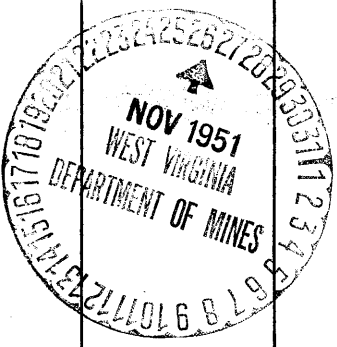
Company QUAKER STATE OIL REFINING CORP.  
Address Box 1789 Parkersburg, W. Va.  
Farm John Judge Acres 54  
Location (waters) \_\_\_\_\_  
Well No. 2 Elev. 1,336'  
District Greene County Netzel  
The surface of tract is owned in fee by John Judge Mrs.  
Address \_\_\_\_\_  
Mineral rights are owned by \_\_\_\_\_  
Address \_\_\_\_\_  
Drilling commenced \_\_\_\_\_  
Drilling completed Feb. 18, 1899  
Date Shot \_\_\_\_\_ From \_\_\_\_\_ To \_\_\_\_\_  
With \_\_\_\_\_  
Open Flow \_\_\_\_\_ /10ths Water in \_\_\_\_\_ Inch  
\_\_\_\_\_ /10ths Merc. in \_\_\_\_\_ Inch  
Volume \_\_\_\_\_ Cu. Ft.  
Rock Pressure \_\_\_\_\_ lbs. \_\_\_\_\_ hrs.  
Oil \_\_\_\_\_ bbls., 1st 24 hrs.  
Fresh water \_\_\_\_\_ feet \_\_\_\_\_ feet  
Salt water \_\_\_\_\_ feet \_\_\_\_\_ feet

Oil or Gas Well Gas  
(KIND)

Casing and Tubing	Used in Drilling	Left in Well	Packers
Size			
16			Kind of Packer
13			
10	750		Size of
8 1/2	2544		
6 5/8	2293	2293	Depth set
5 3/16	2500	2500	
3			Perf. top
2	3136	3136	Perf. bottom
Liners Used			Perf. top
			Perf. bottom

CASING CEMENTED \_\_\_\_\_ SIZE \_\_\_\_\_ No. Ft. \_\_\_\_\_ Date \_\_\_\_\_  
COAL WAS ENCOUNTERED AT 1000 FEET \_\_\_\_\_ INCHES  
\_\_\_\_\_ FEET \_\_\_\_\_ INCHES FEET \_\_\_\_\_ INCHES  
\_\_\_\_\_ FEET \_\_\_\_\_ INCHES FEET \_\_\_\_\_ INCHES

Formation	Color	Hard or Soft	Top	Bottom	Oil, Gas or Water	Depth Found	Remarks
Coal, Pittsburgh			1,000	---			
Sand, Big Injun			2,300	---	Gas		
Gordon Stray			3,088		Gas		
Gordon			3,109	3,236			
Total Depth				3,236			



(Over) DEC 2 1952

Formation	Color	Hard or Soft	Top	Bottom	Oil, Gas or Water	Depth Found	Remarks

Date November 16, 19 51

APPROVED QUAKER STATE OIL REFINING CORP., Owner

By H.F. Johnston  
H.F. Johnston, (title) Geologist.