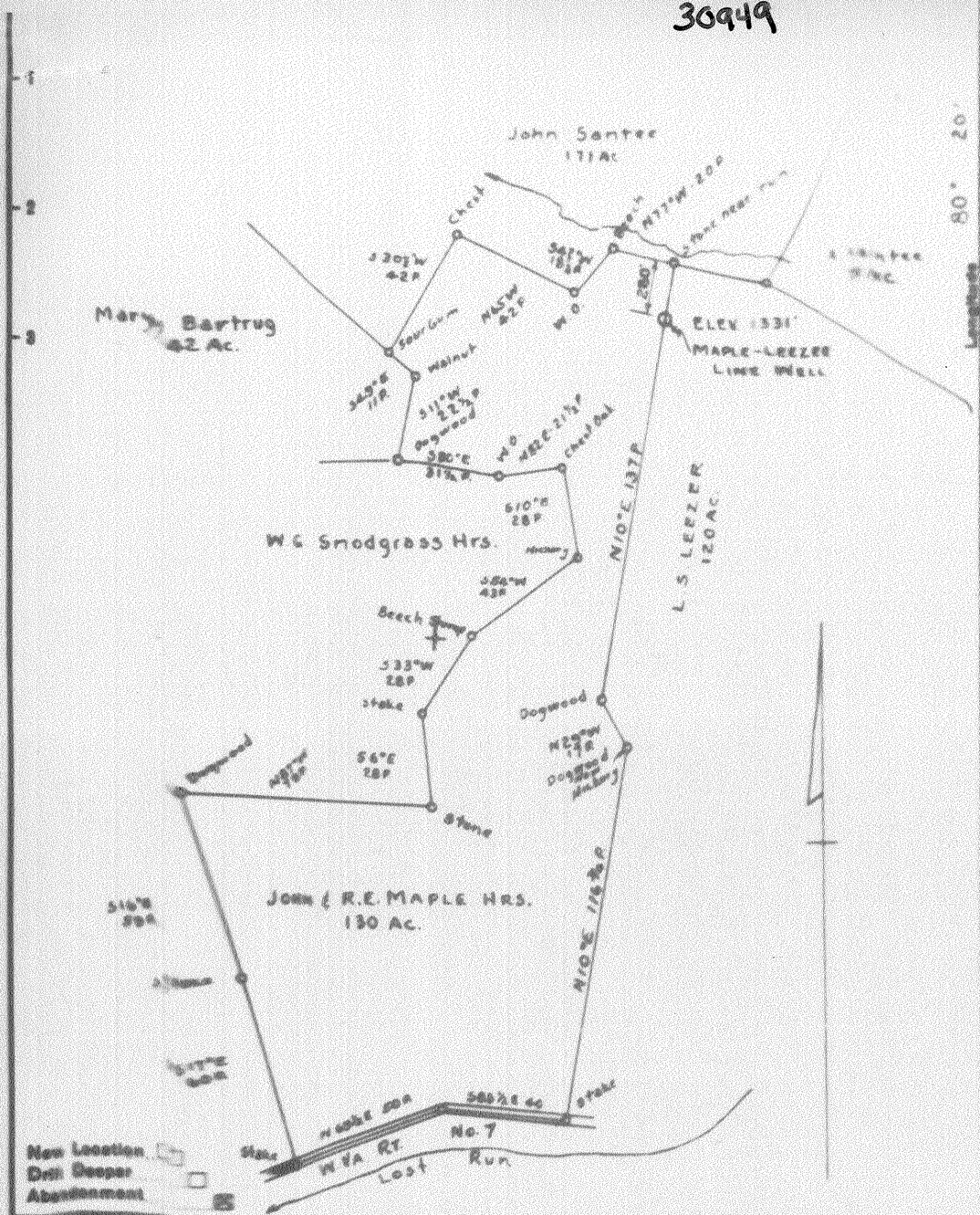




30949



Company SANTRE OIL AND GAS CO.  
 Address MUNSHOOD, W.V.  
 Farm MAPLE - LEIZER LINE WELL  
 Tract                      Lease No. -  
 Well (Farm) No. 1 Serial No. -  
 Elevation (Spirit Level) 1331'  
 Quadrangle                     

STATE OF WEST VIRGINIA  
 DEPARTMENT OF MINES  
 OIL AND GAS DIVISION  
 CHARLESTON

**WELL LOCATION MAP**  
 FILE NO. WEE - 9597

WET-949 - A

Church District, Wetzel County, W. Va.

By The Pure Oil Co.

Well started July 12, 1906; completed, Aug. 16, 1906.

Contractor, H. J. Akins. Price per foot, \$1.00.

Filled up 500 ft. within 24 hrs.; gas pressure light.

14" conductor; 10" casing, 250' (pulled); 8", 1493' (1100' pulled); 6-5/8", 2088'.

Shot March 17, 1908, by Fisher Torpedo Co., with 100 qts.; 20' shell; 20' anchor; depth of well when shot, 2507'; depth, top of shot, 2465'.

Record from E. Townley, Room 2308, 35 E. Wacker Drive, Chicago, Ill., March 13, 1931.

	Top.	Bottom.
Pittsburgh Coal	1102	- 1107
Big Dunkard Sand	1570	- 1630
Salt Sand	2068	- 2138
Red cave	2138	- 2208
Maxton Sand (first pay, 2233-2235';		
2nd pay, 2238-2250')	2208	- 2304
Total depth		2306