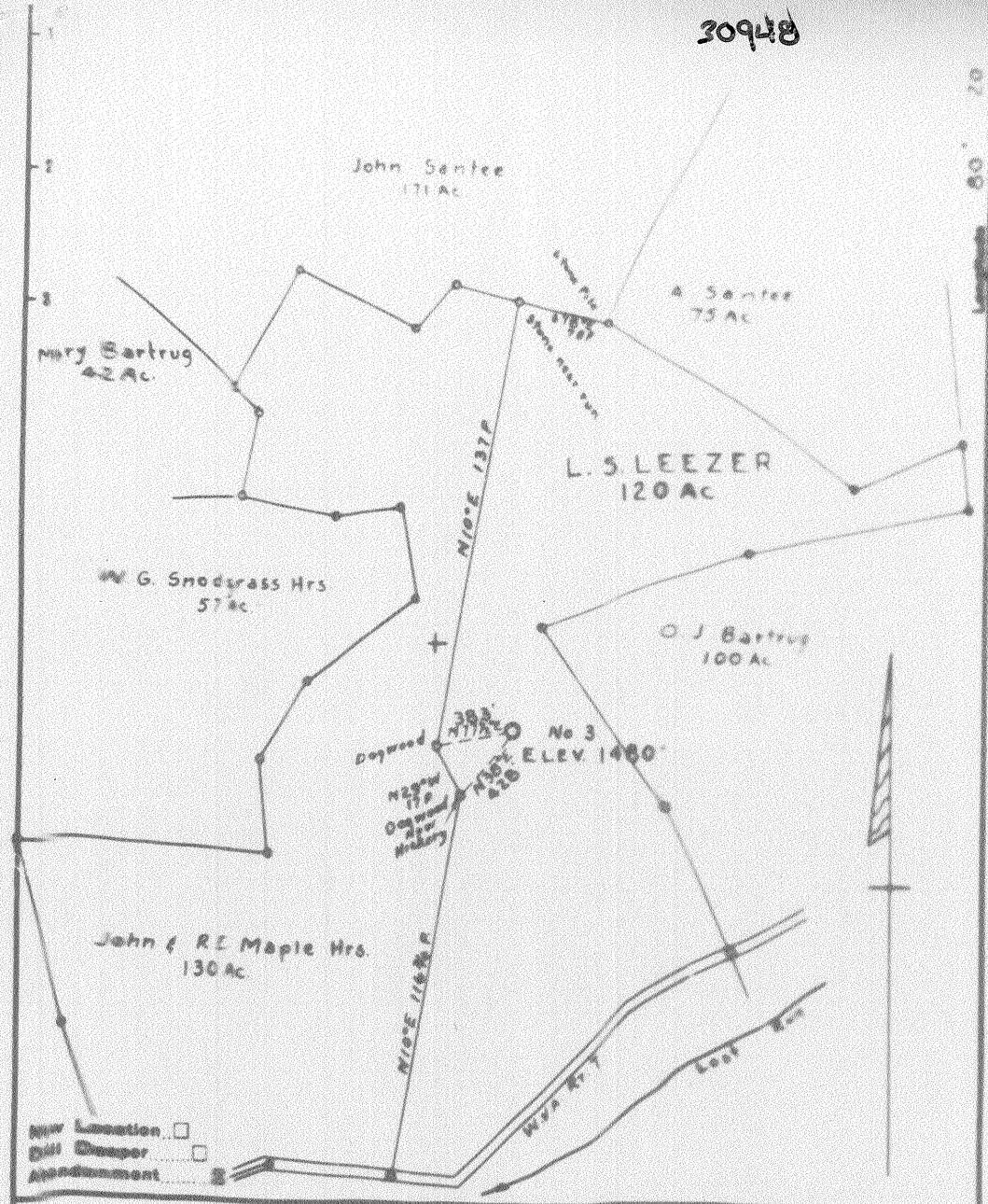




30948



Company SANTER OIL AND GAS CO.  
 Address HUNDED W.VA.  
 From L. S. LEEZER  
 Tract \_\_\_\_\_ Acres 120 Lease No. -  
 Well (Farm) No. 3 Serial No. -  
 Elevation (Spirit Level) 1480'  
 Quadrangle MANNINGTON  
 County WETZEL District CHURCH

STATE OF WEST VIRGINIA  
 DEPARTMENT OF MINES  
 OIL AND GAS DIVISION  
 CHARLESTON

**WELL LOCATION MAP**  
 FILE NO. WEL-948-A

◆ Denotes location of well on United States Topographic Maps, scale 1 to 62,500, lat.



STATE OF WEST VIRGINIA  
DEPARTMENT OF MINES  
OIL AND GAS DIVISION

1380

WELL RECORD

Permit No. 948-A Oil or Gas Well X (KIND)

Company Santee Oil & Gas Co.  
Address Hundred, West Virginia  
Farm L. S. Leezer Acres 120  
Location (waters) Lost Run  
Well No. 3 Elev. 1480  
District Church County Wetzel  
The surface of tract is owned in fee by \_\_\_\_\_  
Address \_\_\_\_\_  
Mineral rights are owned by \_\_\_\_\_  
Address \_\_\_\_\_  
Drilling commenced No Record  
Drilling completed No Record  
Date Shot No Record From \_\_\_\_\_ To \_\_\_\_\_  
With \_\_\_\_\_

Casing and Tubing	Used in Drilling	Left in Well	Packers
Size			
16			Kind of Packer
13			
10			Size of
8 1/4	1710	1685	
6 5/8	2316	2316	Depth set
5 3/16			
3			Perf. top
2	2508	2508	Perf. bottom
Liners Used			Perf. top
			Perf. bottom

Open Flow \_\_\_\_\_ /10ths Water in \_\_\_\_\_ Inch  
\_\_\_\_\_ /10ths Merc. in \_\_\_\_\_ Inch  
Volume \_\_\_\_\_ Cu. Ft.  
Rock Pressure \_\_\_\_\_ lbs. \_\_\_\_\_ hrs.  
Oil \_\_\_\_\_ bbls., 1st 24 hrs.  
Fresh water \_\_\_\_\_ feet \_\_\_\_\_ feet  
Salt water \_\_\_\_\_ feet \_\_\_\_\_ feet

CASING CEMENTED \_\_\_\_\_ SIZE \_\_\_\_\_ No. Ft. \_\_\_\_\_ Date \_\_\_\_\_  
COAL WAS ENCOUNTERED AT 1316 FEET ? INCHES  
\_\_\_\_\_ FEET \_\_\_\_\_ INCHES FEET \_\_\_\_\_ INCHES  
\_\_\_\_\_ FEET \_\_\_\_\_ INCHES FEET \_\_\_\_\_ INCHES

Formation	Color	Hard or Soft	Top	Bottom	Oil, Gas or Water	Depth Found	Remarks
Pittsburgh Coal			1316				
Little Dunkard			1690	1720			
Big Dunkard			1785	1825			
Gas <del>Sand</del> Sand			1975	2035			
Salt Sands			2190	2325			
Red Cave			2382	2450			
Maxon Sand			2462				
Pay			2467	2471			
Pay			2479	2485			
Total Depth				2508			

