

Latitude

Longitude

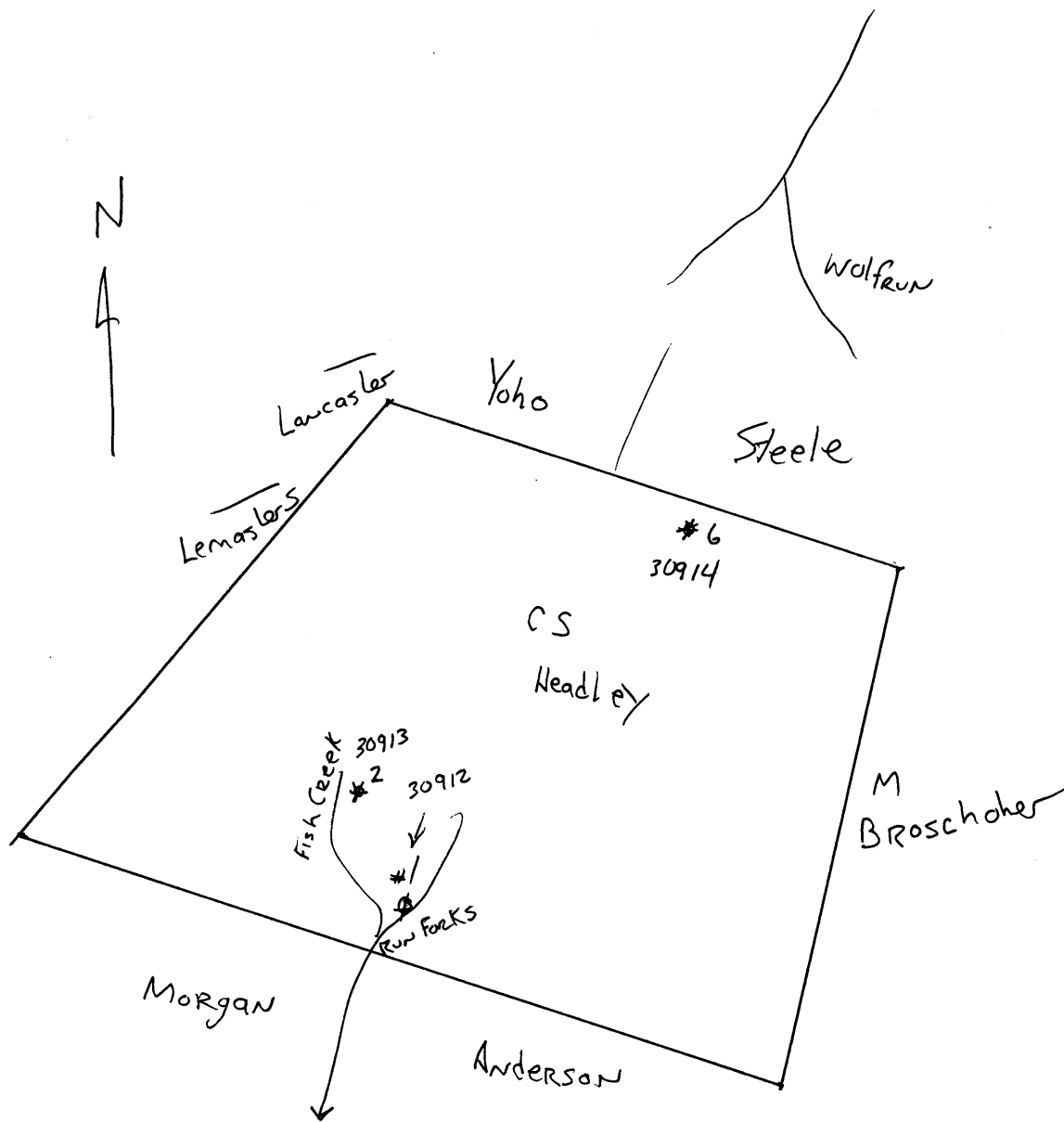
2.115
.76w

Topo Location

7.5' Loc. _____ 15' Loc. _____
 (calc.) _____

Company Silver Hill Oil Co
Farm CS Headley # 1
15' Quad _____
(sec.) _____
7.5' Quad Porters Falls
District Green

WELL LOCATION PLAT
County 103 Permit 30912



Green District, Wetsel County, W. Va.

By Silver Hill Oil Co.

Conductor, 18"; 10" casing, 288"; 8", 1024";

Water at 50'; water well at 68'.

	Top.	Bottom.	Thickness.
Coal	295	- 298	3
Slate and shells	298	- 460	162
Red rock	460	- 470	10
Shells	470	- 497	27
Coal	497	- 500	3
Lime	500	- 630	130
Slate and shells	630	- 670	40
Hard lime	670	- 680	10
Slate	680	- 715	35
Hard lime	715	- 745	30
Coal	745	- 747	2
Slate	747	- 775	28
Sand	775	- 820	45
Red rock and slate	820	- 850	30
Sand	850	- 865	15
Slate and shells	865	- 890	25
Shelly.....	890	- 930	40
Lime	930	- 990	60
Slate	990	- 1015	25
Lime	1015	- 1040	25
White slate	1040	- 1050	10
Slate and shells	1050	- 1100	50
Hard lime	1100	- 1125	25
Coal	1125	- 1128	3
Slate and shells	1128	- 1255	127
Sand	1255	- 1300	45
Lime and slate	1300	- 1400	100
Sand	1400	- 1440	40
Slate	1440	- 1560	120
Sand	1560	- 1610	50
Slate	1610	- 1740	130
Sand	1740	- 1785	45
Slate (Little Lime, 1760-1860')	1785	- 1860	75
Big Lime	1860	- 1930	70
Big Injun Sand (Keener Sand, 1930-2030')	1930	- 2181	251
Unrecorded	2181	- 2380	199
Hard shells	2380	- 2440	60
Slate	2440	- 2530	90
Berea Grit	2530	- 2600	70
Red rock	2600	- 2680	80
Unrecorded	2680	- 2715	35
Gordon Stray Sand	2715	- 2755	40
Gordon Sand (oil, 2769-2777')	2769	- 2790	21
Break	2790	- 2808	18
slate, to bottom	2808	- 2825	17

103-912A

C. S. Headley No. 1 Well Record (115-S)(263E)

W. Va.

Green District, Wetzel County, on a branch of Fishing Creek
 1.2 miles northeast of Porters Falls; completed in February,
 1915; authority, Silverhill Oil Company; elevation, _____.

	Top. Feet.	Bottom. Feet.
Conductor	18	
Water at	50	
Water well	68	
Coal, <u>Washington</u>	295	398
Slate and shells	298	460
Red rock	460	470
Shells	470	497
Coal, <u>Uniontown</u>	497	500
Lime	500	630
Slate and shells	630	670
Lime, hard	670	680
Slate	680	715
Lime, hard	715	745
Coal, <u>Pittsburgh</u>	745	747
Slate.....	747	775
Sand	775	820
Red rock and slate.....	820	850
Sand	850	865
Slate and shells	865	890
Shells	890	930
Lime shells	930	990
Slate.....	990	1015
Lime	1015	1040
Slate, white	1040	1050
Slate and shells	1050	1100
Lime, hard	1100	1125
Coal, <u>Bakerstown</u>	1125	1138
Slate and shells	1138	1255
Sand, <u>First Salt</u> <i>Big Island, M. County</i>	1255	1300
Lime and slate	1300	1400
<i>bus</i> Sand, <u>Second Salt</u> <u>Lower Freeport</u>	1400	1440
Slate	1440	1560
Sand, <u>second cow Run, Homewood</u>	1560	1610
Slate	1610	1740
Sand	1740	1785
Little Lime	1785	1860
Big Lime	1860	1930
Sand, <u>Big Injun</u>	1930	2181
Unrecorded	2181	2360
Shells, hard	2360	2440
Slate	2440	2530
Sand, <u>Berea</u>	2530	2600

	Top. Feet.	Bottom. Feet.
Red rock	2600	2680
Unrecorded	2680	2715
Sand, <u>Gordon Stray</u>	2715	2755
Slate	2755	2769
Sand, <u>Gordon</u> (first oil pay, 2769-2774)	2769	2790
Break of slate	2790	2808
Slate to bottom	2808	2825
Total depth		2835

Well shot with 8 qts.

10" casing placed in well, 283', and pulled out.
 8" casing placed in well, 1034', and pulled out.
 6 5/8" casing placed in well, 1735', and the
 same was left in well.

5 3/16" liner set in well, 980', and a wall
 packer on bottom and also a wall packer on top
 of same.

Liner set at 2745' to 1735'.

2" tubing in well, 2835'. Well tubed at 2764'.

Well produced 25 bbls. natural after first 34 hrs.