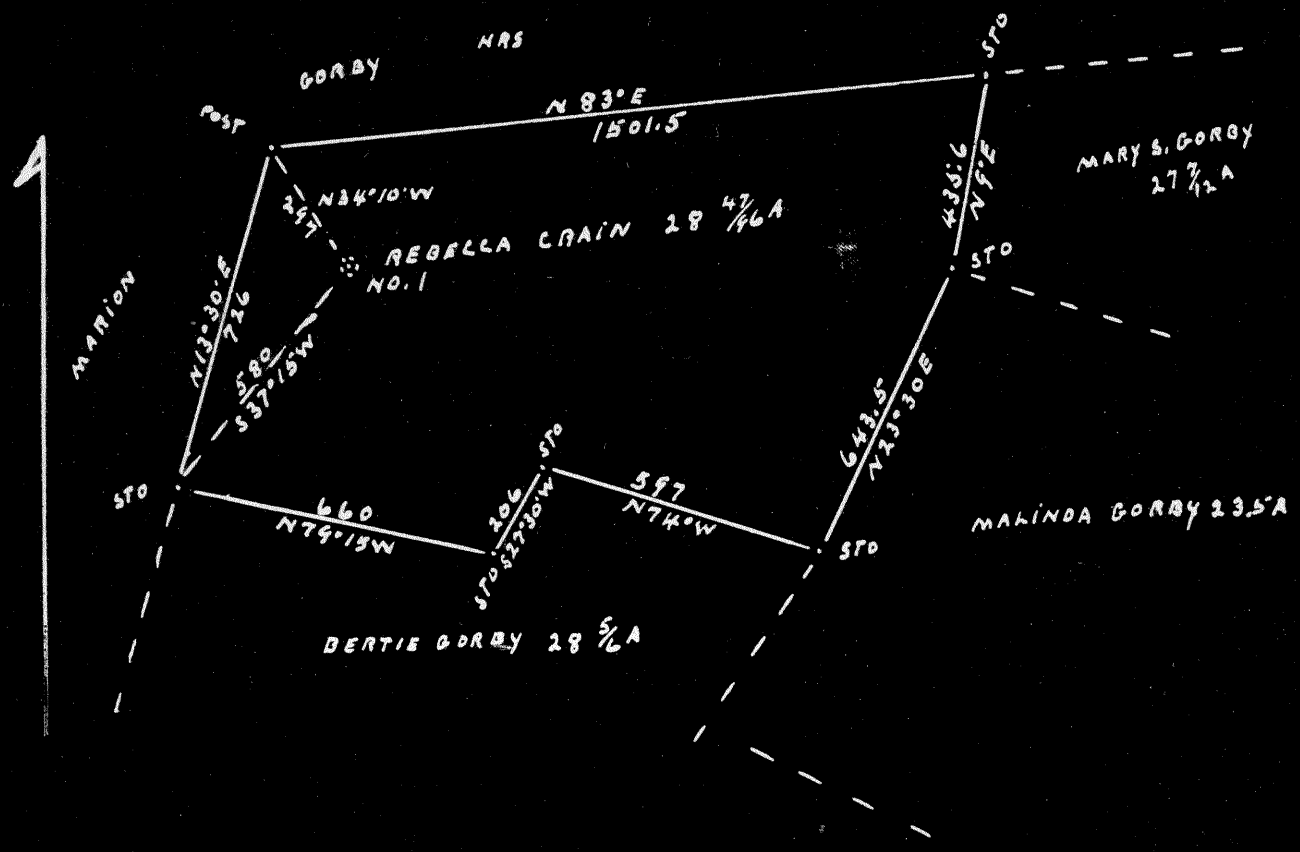


0 1 2 3

+ Latitude 39° 40'

Longitude 80° 35'

PRESENT LAND OWNERS = REBECCA CRAIN MRS
COAL NOT OPERATED
HELD BY THE STATE FOR TAXES IN NAME OF IOA COAL MIN



New Location...
 Drill Deeper...
 Abandonment...

S 0.16
 W 2.60

Company Quaker State Oil Refining Corp
 Address Parkersburg, West Virginia
 Farm Rebecca Crane (Gorby Heirs)
 Tract One Acres 28 47/46 Lease No. _____
 Well (Farm) No. 1, Serial No. _____
 Elevation (Spirit Level) 1311
 Quadrangle Littleton,
 County WETZEL District CENTER
 Engineer J. M. Cochran
 Engineer's Registration No. Co; Surveyor _____
 File No. _____ Drawing No. _____
 Date 8-26-1959 Scale 400' = 1"

STATE OF WEST VIRGINIA
 DEPARTMENT OF MINES
 OIL AND GAS DIVISION
 CHARLESTON

WELL LOCATION MAP
 FILE NO. Wct-872-A

+ Denotes location of well on United States Topographic Maps, scale 1 to 62,500, latitude and longitude lines being represented by border lines as shown.
 - Denotes one inch spaces on border line of original tracing.



STATE OF WEST VIRGINIA
DEPARTMENT OF MINES
OIL AND GAS DIVISION

1348

WELL RECORD

Permit No. Ab 87-A Oil or Gas Well Oil
(KIND)

Company QUAKER STATE OIL REFINING CORP.
Address Box 1789 Parkersburg, W. Va.
Farm Gorby Heirs Acres 28
Location (waters) Carney Run
Well No. 1 Elev. 1311
District Center County Wetzel
The surface of tract is owned in fee by Rebecca Crane
Address _____
Mineral rights are owned by _____
Address _____
Drilling commenced August 8, 1905
Drilling completed Jan. 18, 1906
Date Shot 2/8/06 From _____ To _____
With 90 qts.
Open Flow _____ /10ths Water in _____ Inch
_____ /10ths Merc. in _____ Inch
Volume _____ Cu. Ft.
Rock Pressure _____ lbs. _____ hrs.
Oil Oil _____ bbls., 1st 24 hrs.
Fresh water _____ feet _____ feet
Salt water _____ feet _____ feet

Casing and Tubing	Used in Drilling	Left in Well	Packers
Size			
16			Kind of Packer
13	35	35	
10	750	750	Size of
8 1/4	1650	1410	
6 5/8	2430	2430	Depth set
5 3/16			
3			Perf. top
2	3300	3300	Perf. bottom
Liners Used			Perf. top
			Perf. bottom

CASING CEMENTED _____ SIZE _____ No. Ft. _____ Date _____
COAL WAS ENCOUNTERED AT 1250 FEET _____ INCHES
_____ FEET _____ INCHES FEET _____ INCHES
_____ FEET _____ INCHES FEET _____ INCHES

Formation	Color	Hard or Soft	Top	Bottom	Oil, Gas or Water	Depth Found	Remarks
Pittsburgh Coal			1250	---			
Big Injun			2465	2695			
Gordon			3282		Oil show 3287 Oil good 3298-3305		
Total Depth				3310			

