

Latitude

Longitude

+ .765  
1.47w

Topo Location

7.5' Loc. \_\_\_\_\_ 15' Loc. \_\_\_\_\_  
\_\_\_\_\_ (calc.) \_\_\_\_\_

Company Int Pipe + Supply Co

Farm J B Pries

15' Quad \_\_\_\_\_  
(sec.)

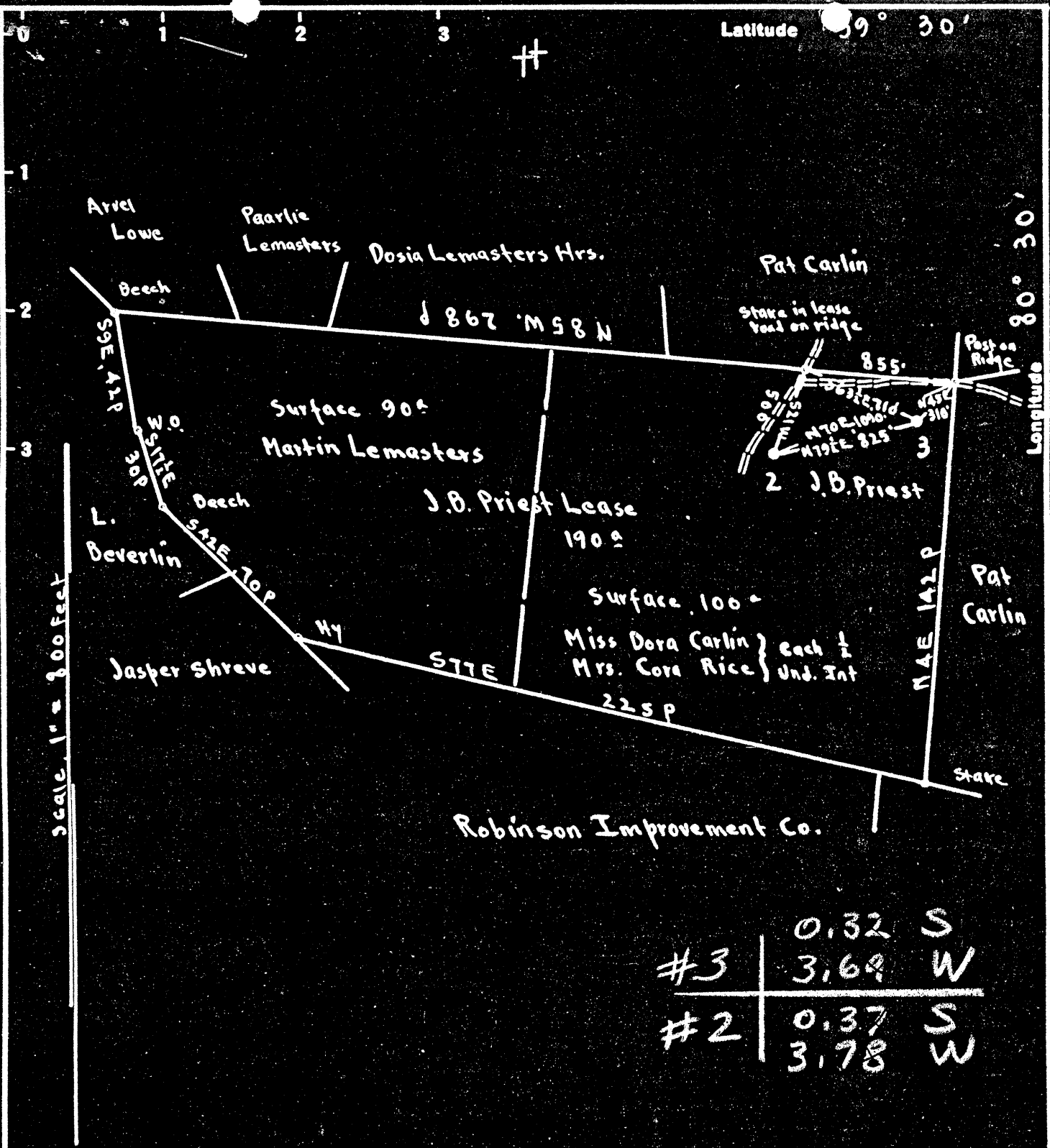
7.5' Quad Folsom

District Grant

WELL LOCATION PLAT

County 103 Permit 30823

Latitude 39° 30'



#3	0.32 S
	3.69 W
#2	0.37 S
	3.78 W

Surface: Miss Dora Carlin & Mrs Cora Rice; Smithfield W. Va.  
 Coal: State of West Virginia.

New Location...  
 Drill Deeper.....  
 Abandonment.....

On 400' map # 2951 N 3 E 3

Company The Interstate Pipe & Supply Co.  
 Address Marietta, Ohio  
 Farm J.B. Priest  
 Tract \_\_\_\_\_ Acres 190 Lease No. \_\_\_\_\_  
 Well (Farm) No. 2 9 3 Serial No. 1465-89-1464-47  
 Elevation (Spirit Level) 02 - 1255.80 - 1254.80  
 Quadrangle CENTERPOINT  
 County Wetzel District Grant  
 Engineer E.C. Tabler  
 Engineer's Registration No. \_\_\_\_\_  
 File No. \_\_\_\_\_ Drawing No. \_\_\_\_\_  
 Date July 20<sup>th</sup> 1948 Scale 1" = 800 feet

STATE OF WEST VIRGINIA  
 DEPARTMENT OF MINES  
 OIL AND GAS DIVISION  
 CHARLESTON

WELL LOCATION MAP  
 FILE NO. Wet-822-A-#3  
Wet-823-A-#2

+ Denotes location of well on United States Topographic Maps, scale 1 to 62,500, latitude and longitude lines being represented by border lines as shown.

- Denotes one inch spaces on border line of original tracing.



1257

STATE OF WEST VIRGINIA  
DEPARTMENT OF MINES  
OIL AND GAS DIVISION

WELL RECORD

Permit No. 823-A Oil or Gas Well Oil (KIND)

Company The Interstate Pipe & Supply Company  
Address P. O. Box 611, Marietta, Ohio  
Farm J. B. Priest Acres 190  
Location (waters) \_\_\_\_\_  
Well No. 2 Elev. 1464.49  
District Grant County Wetzel  
The surface of tract is owned in fee by Miss Dora Carlin & Mrs. Cora Rice Address Smithfield, W. Va.  
Mineral rights are owned by State of West Virginia Address Charleston, W. Va.

Drilling commenced Feb. 4, 1895  
Drilling completed July 6, 1895  
Date Shot 1906 From \_\_\_\_\_ To 2607  
1919 \_\_\_\_\_ 2606  
With \_\_\_\_\_

Open Flow \_\_\_\_\_ /10ths Water in \_\_\_\_\_ Inch  
\_\_\_\_\_ /10ths Merc. in \_\_\_\_\_ Inch  
Volume \_\_\_\_\_ Cu. Ft.  
Rock Pressure \_\_\_\_\_ lbs. \_\_\_\_\_ hrs.  
Oil \_\_\_\_\_ bbls., 1st 24 hrs.  
Fresh water \_\_\_\_\_ feet \_\_\_\_\_ feet  
Salt water \_\_\_\_\_ feet \_\_\_\_\_ feet

Casing and Tubing	Used in Drilling	Left in Well	Packers
Size			
16			Kind of Packer _____
13			
10	668'	668'	Size of _____
8 1/4	1632'	1632'	
6 5/8	2595' 6"	2595' 6"	Depth set _____
5 3/16			
3			Perf. top _____
2			Perf. bottom _____
Liners Used			Perf. top _____
			Perf. bottom _____

CASING CEMENTED \_\_\_\_\_ SIZE \_\_\_\_\_ No. Ft. \_\_\_\_\_ Date \_\_\_\_\_  
COAL WAS ENCOUNTERED AT 1220 FEET 108 INCHES  
\_\_\_\_\_ FEET \_\_\_\_\_ INCHES FEET \_\_\_\_\_ INCHES  
\_\_\_\_\_ FEET \_\_\_\_\_ INCHES FEET \_\_\_\_\_ INCHES

Formation	Color	Hard or Soft	Top	Bottom	Oil, Gas or Water	Depth Found	Remarks
Conductor				16			
Pittsburgh Coal			1220	1229			
Salt Sand			2200	2240			
Big Lime			2466	2538			
Big Injun			2538				
1st. Pay Oil			2611				
Total				2636			
Remarks: <u>6-5/8" casing collapsed and swedged out and well finished with 5-3/16" hole.</u>							

