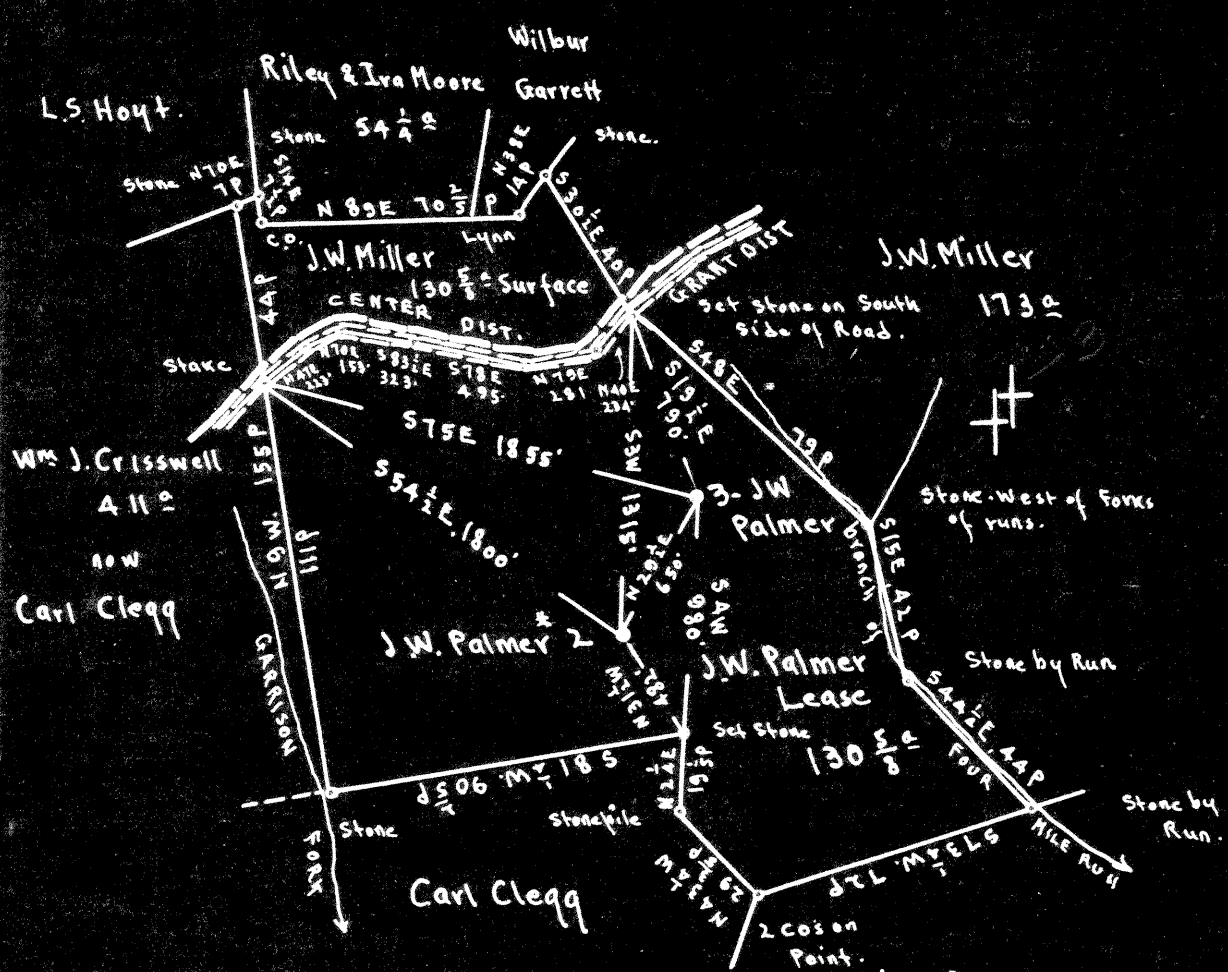


Latitude 37° 40'

Longitude 80° 35'

Scale: 1" = 800 Feet



Elevations:

- J.W. Palmer { Casinghead - 1218.71  
Ground - 1216.21
- J.W. Palmer { Floor - 1240.91  
Ground - 1240.91

#2	3.86	S
	1.97	W
#3	3.72	S
	1.89	W

Surface: J.W. Miller, Wileyville, Wetzel Co. W.Va.  
 Coal: State of West Virginia.

- New Location
- Drill Deeper
- Abandonment

N 68 N 12 E 1

Company Randall-Zogg Supply Co.  
 Address Owensboro, Ky.  
 Farm J.W. Palmer  
 Tract Acres 130 2/3 Lease No. \_\_\_\_\_  
 Well (Farm) No. 2 and 3 Serial No. C  
 Elevation (Spirit Level) See above  
 Quadrangle LITTLETON  
 County Wetzel District Grant  
 Engineer E.C. Tabler  
 Engineer's Registration No. \_\_\_\_\_  
 File No. \_\_\_\_\_ Drawing No. \_\_\_\_\_  
 Date May 11<sup>th</sup> 1948 Scale 1" = 800 Feet

STATE OF WEST VIRGINIA  
 DEPARTMENT OF MINES  
 OIL AND GAS DIVISION  
 CHARLESTON

WELL LOCATION MAP  
 FILE NO. Wet-692-A-#2  
Wet-703-A-#3

+ Denotes location of well on United States Topographic Maps, scale 1 to 62,500, latitude and longitude lines being represented by border lines as shown.

- Denotes one inch spaces on border line of original tracing.



STATE OF WEST VIRGINIA  
DEPARTMENT OF MINES  
OIL AND GAS DIVISION

1164

WELL RECORD

Permit No. 703-A

Oil or Gas Well OIL  
(KIND)

Company RANDALL-ZOGG SUPPLY COMPANY  
Address BOX 526, CHARLESTON, 22 W. VA.  
Farm J. W. Falmer Acres 130 5/8  
Location (waters) Four Mile Run  
Well No. Three (3) Elev. 1240.91  
District Grant County Wetzel  
The surface of tract is owned in fee by J. W. Miller,  
Address Wileyville, W. Va.  
Mineral rights are owned by Coal sold to State of  
W. Va. for Taxes Address \_\_\_\_\_  
Drilling commenced No Record  
Drilling completed No Record  
Date Shot SEE BELOW From \_\_\_\_\_ To \_\_\_\_\_  
With \_\_\_\_\_

Casing and Tubing	Used in Drilling	Left in Well	Packers
Size			
16			Kind of Packer
13			
10	<u>710'</u>		Size of
8 1/4	<u>1541'</u>	<u>1504'</u>	
6 5/8	<u>2094'</u>	<u>2094'</u>	Depth set
5 3/16	<u>2557'</u>	<u>2557'</u>	
3			Perf. top
2	<u>3142'</u>	<u>3142'</u>	Perf. bottom
Liners Used			Perf. top
			Perf. bottom

Open Flow /10ths Water in \_\_\_\_\_ Inch  
/10ths Merc. in \_\_\_\_\_ Inch  
Volume \_\_\_\_\_ Cu. Ft.  
Rock Pressure \_\_\_\_\_ lbs. \_\_\_\_\_ hrs.  
Oil No Record bbls., 1st 24 hrs.  
Fresh water \_\_\_\_\_ feet \_\_\_\_\_ feet  
Salt water \_\_\_\_\_ feet \_\_\_\_\_ feet

CASING CEMENTED \_\_\_\_\_ SIZE \_\_\_\_\_ No. Ft. \_\_\_\_\_ Date \_\_\_\_\_

COAL WAS ENCOUNTERED AT 1064 FEET 96 INCHES  
\_\_\_\_\_ FEET \_\_\_\_\_ INCHES FEET \_\_\_\_\_ INCHES  
\_\_\_\_\_ FEET \_\_\_\_\_ INCHES FEET \_\_\_\_\_ INCHES

Formation	Color	Hard or Soft	Top	Bottom	Oil, Gas or Water	Depth Found	Remarks
Pittsburgh Coal			<u>1064'</u>	<u>1072'</u>			
Dunkard Sand			<u>1540'</u>	<u>1580'</u>			
Salt Sand			<u>1800'</u>	<u>2100'</u>			
Pencil Cave			<u>2270'</u>	<u>2276'</u>			
Big Lime			<u>2276'</u>	<u>2334'</u>			
Big Injun Sand			<u>2334'</u>	<u>2565'</u>			
Stray Sand			<u>3100'</u>				
Gordon Sand			<u>3127'</u>				
Total Depth				<u>3142'</u>	<u>Oil</u> <u>Oil</u>	<u>3130'</u> <u>3138'</u>	

SHOT RECORD

WHEN COMPLETED  
May 25th, 1908  
March 27th, 1940

Shot with 30 Qts.  
" " 40 "  
" " 40 "

NOTE - March 1940. 5-3/16" Casing partly collapsed, it was mandrilled out and the well cleaned out to bottom.

NOTE - During various times this past summer, the water broke in on this well and were unable to shut it off with red mud. It was decided to pull the 5-3/16" Casing, it picked up rather easy we thought it might be parted, however we came out with it and it was parted leaving about 400' in, we thought we might get by, by running this pipe back in with a Hook Wall packer and set it above where it parted, of which we got a perfect job so far as shutting off the water was concerned. We then started cleaning out down to the pipe, after going far enough to know that we should be far enough to be inside of the casing it was discovered that we were going down the outside of it and we went on to a distance of about 50'. The above note indicates the pipe collapsed but it just dropped about 10' causing I believe the bending of the pipe just below where it parted. It was our thought that the well never would pay for trying to fix it up.

