

New Location  
 Drill Done  
 Abandoned

Company	Wright Oil Co.
Address	Hundred Wye
Farm	Jack Antill
Tract	Series 272 Lease No.
Well No.	No. 392 Series No.
Elevation	3 = 1080
Quadrant	Mannington

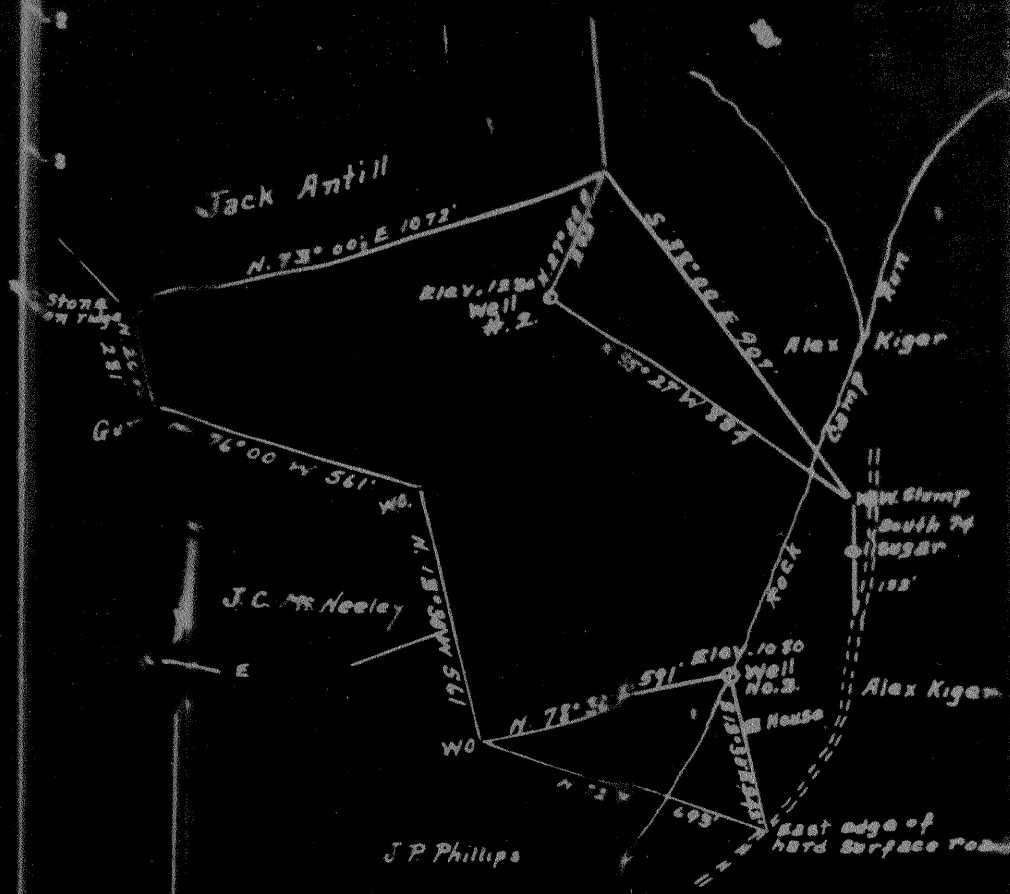
STATE OF WEST VIRGINIA  
 DEPARTMENT OF MINES  
 OIL AND GAS DIVISION  
 CHARLESTON

**WELL LOCATION MAP**

FILE NO. \_\_\_\_\_

Location of well on United States

30684



New Location  
 Drill Down  
 Abandoned

Company	Naught Oil Co.
Address	Hundred W Va
Farm	Jack Antill
Treaty	—
Well (Foot)	—
Elevation (Spine Level)	1030
Quadrangle	Mannington

STATE OF WEST VIRGINIA  
 DEPARTMENT OF MINES  
 OIL AND GAS DIVISION  
 CHARLESTON  
**WELL LOCATION MAP**  
 FILE NO. \_\_\_\_\_

Indicates location of well on United States



1203

STATE OF WEST VIRGINIA  
DEPARTMENT OF MINES  
OIL AND GAS DIVISION

WELL RECORD

Ab 684-A

Permit No. \_\_\_\_\_ Oil or Gas Well Oil  
(KIND)

Company Haught Oil Co., A.M. Snider, Opr.  
 Address Hundred, West Virginia  
 Farm Jack Antill Acres 27 1/2  
 Location (waters) Rock Camp  
 Well No. 2 Elev. 1230  
 District Church County Wetzel  
 The surface of tract is owned in fee by \_\_\_\_\_  
 Address \_\_\_\_\_  
 Mineral rights are owned by \_\_\_\_\_  
 Address \_\_\_\_\_  
 Drilling commenced May 5, 1905  
 Drilling completed July 3, 1905  
 Date Shot \_\_\_\_\_ From \_\_\_\_\_ To \_\_\_\_\_  
 With \_\_\_\_\_  
 Open Flow \_\_\_\_\_ /10ths Water in \_\_\_\_\_ Inch  
 \_\_\_\_\_ /10ths Merc. in \_\_\_\_\_ Inch  
 Volume \_\_\_\_\_ Cu. Ft.  
 Rock Pressure \_\_\_\_\_ lbs. \_\_\_\_\_ hrs.  
 Oil \_\_\_\_\_ bbls., 1st 24 hrs.  
 Fresh water \_\_\_\_\_ feet \_\_\_\_\_ feet  
 Salt water \_\_\_\_\_ feet \_\_\_\_\_ feet

Casing and Tubing	Used in Drilling	Left in Well	Packers
Size			
16			Kind of Packer
13			
10	158'6"	158'6"	Size of
8 1/4	1496'1"	1496'1"	
6 1/2	2204'5"	2204'5"	Depth set
5 3/16	2900'1"	2900'1"	
3			Perf. top
2			Perf. bottom
Liners Used			Perf. top
			Perf. bottom

CASING CEMENTED \_\_\_\_\_ SIZE \_\_\_\_\_ No. Ft. \_\_\_\_\_ Date \_\_\_\_\_  
 COAL WAS ENCOUNTERED AT 980 FEET 84 INCHES  
 \_\_\_\_\_ FEET \_\_\_\_\_ INCHES FEET \_\_\_\_\_ INCHES  
 \_\_\_\_\_ FEET \_\_\_\_\_ INCHES FEET \_\_\_\_\_ INCHES

Formation	Color	Hard or Soft	Top	Bottom	Oil, Gas or Water	Depth Found	Remarks
Pittsburgh Coal			980	987			
Dunkard Sand			1520	1565			
Gas Sand			1657	1702			
Salt Sand			1780	1900	Gas	1890	
2nd Salt Sand			1985	2020			
Big Lime			2177	2254			
Big Injun			2254	2494			
30 Foot			2835	2890	Gas	2341	
50 Foot			2996	3020			
Gorden Sand			3050	3068	Oil	3063	
Total Depth				3075			

