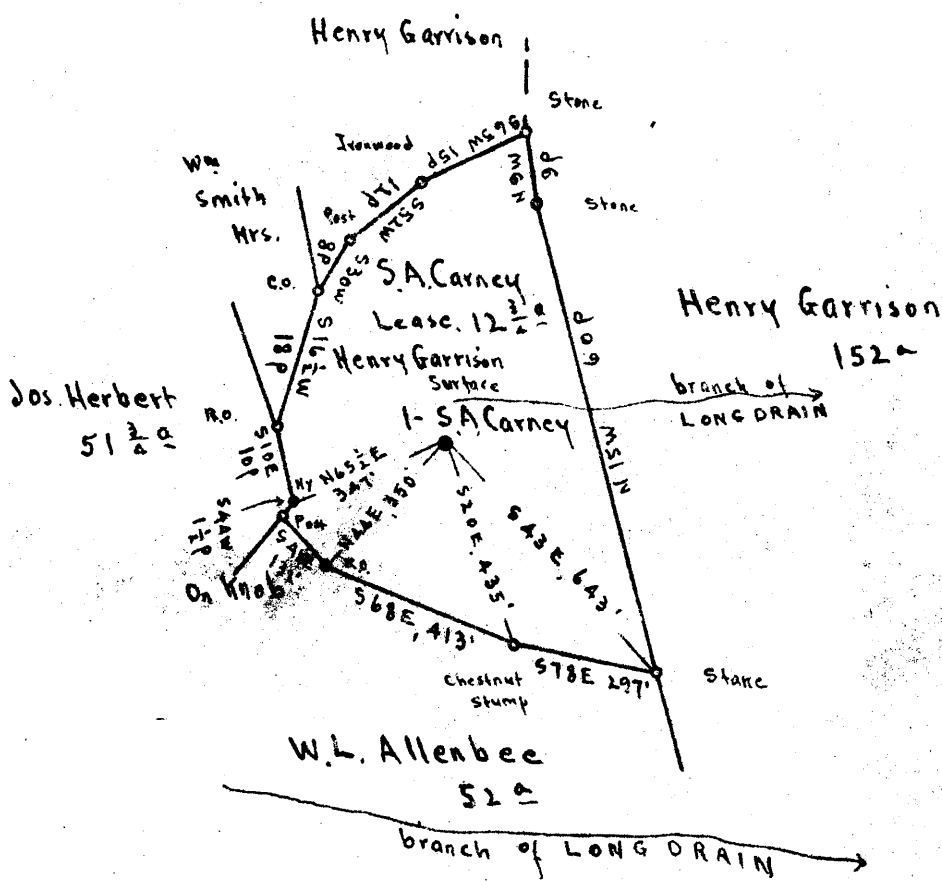


Latitude 3, 45'

Longitude 80° 30'

Scale 1" = 400 Feet



Surface: Henry Garrison, Littleton, Wetzel Co., W.Va.
 Coal: T.L. Rogerson, Moundsville, W.Va.

Note: The topography on the topo sheet is wrong between 's.p. Carney & 's.A. Carney. The Northern farm lines on 's.p. Carney & the Southern farm lines on 's.A. Carney are on point ridges, with a branch of Long Drain between. 's.A. Carney is situated in a cove, in the head of a small branch of Long Drain.

New Location
 Drill Deeper
 Abandonment

N 79

WIN 281948

N 16 E 7

Company Randall-Zogg Supply Co.
 Address Owensboro, Ky.
 Farm S.A. Carney
 Tract Acres 12 3/4 Lease No. _____
 Well (Farm) No. 1 Serial No. _____
 Elevation (Spirit Level) Casinghead - 1287.52
Ground - 1285.72
 Quadrangle LITTLETON
 County Wetzel District Clay
 Engineer E.C. Tabler
 Engineer's Registration No. _____
 File No. _____ Drawing No. _____
 Date May 4th 1948 Scale 1" = 400 Feet

STATE OF WEST VIRGINIA
 DEPARTMENT OF MINES
 OIL AND GAS DIVISION
 CHARLESTON

WELL LOCATION MAP
 FILE NO. WET-673-A

+ Denotes location of well on United States Topographic Maps, scale 1 to 62,500, latitude and longitude lines being represented by border lines as shown.
 - Denotes one inch spaces on border line of original tracing.



STATE OF WEST VIRGINIA
DEPARTMENT OF MINES
OIL AND GAS DIVISION

1305

WELL RECORD

Permit No.

Oil or Gas Well 011
(KIND)

Company RANDALL-EGG SUPPLY COMPANY
Address BOX 526, CHARLESTON, 22 W. VA.
Farm S. A. GARNY Acres 12 3/4
Location (waters) Branch of Long Drain
Well No. 1 Elev. 1295.72
District Clay County Netzel
The surface of tract is owned in fee by Henry Harrison,
Address Littleton, W. Va.
Mineral rights are owned by T. L. Rogerson
Address Mountville, W. Va.

Drilling commenced
Drilling completed 6-2-05
Date Shot See Below From To
With

Open Flow /10ths Water in Inch
 /10ths Merc. in Inch
Volume Cu. Ft.
Rock Pressure lbs. hrs.
Oil 6 1/4 bbls., 1st 24 hrs.
Fresh water feet feet
Salt water feet feet

Casing and Tubing	Used in Drilling	Left in Well	Packers
Size			Kind of Packer
16			
13			
10	330'	330'	Size of
8 1/2	1505'	1505'	
6 3/4	2270'	2270'	Depth set
5 3/16	2664'	2664'	
3			Perf. top
2	3240'	3240'	Perf. bottom
Liners Used			Perf. top
			Perf. bottom

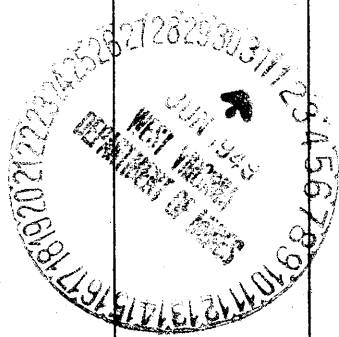
CASING CEMENTED SIZE No. Ft. Date

COAL WAS ENCOUNTERED AT 900 FEET 36 INCHES
1004 FEET 72 INCHES FEET INCHES
 FEET INCHES FEET INCHES

Formation	Color	Hard or Soft	Top	Bottom	Oil, Gas or Water	Depth Found	Remarks
Mapletown Coal			900	905			
Pittsburgh Coal			1004	1010			
Dunkard Sand			1495	1570			
Gas Sand			1785	1850			
First Salt Sand			1938	2081			
Second Salt Sand			2050	2075			
Little Lime			2195	2205			
Big Lime			2215	2283			
Pencil Cave			2205	2215			
Big Injun Sand			2265	2477			
Gas				2356	Gas	2356	
Stray Sand			3072	3100			
Garden Sand			3100	3119	Oil	3114	
Fourth Sand			3155	3169			
Total Depth				3240			

SHOT RECORD

June 3rd, 1905 Shot with 20 qts. Top Shot 3114'
March 15, 1917 " " 30 " " 3112'



JUN 23 1948

