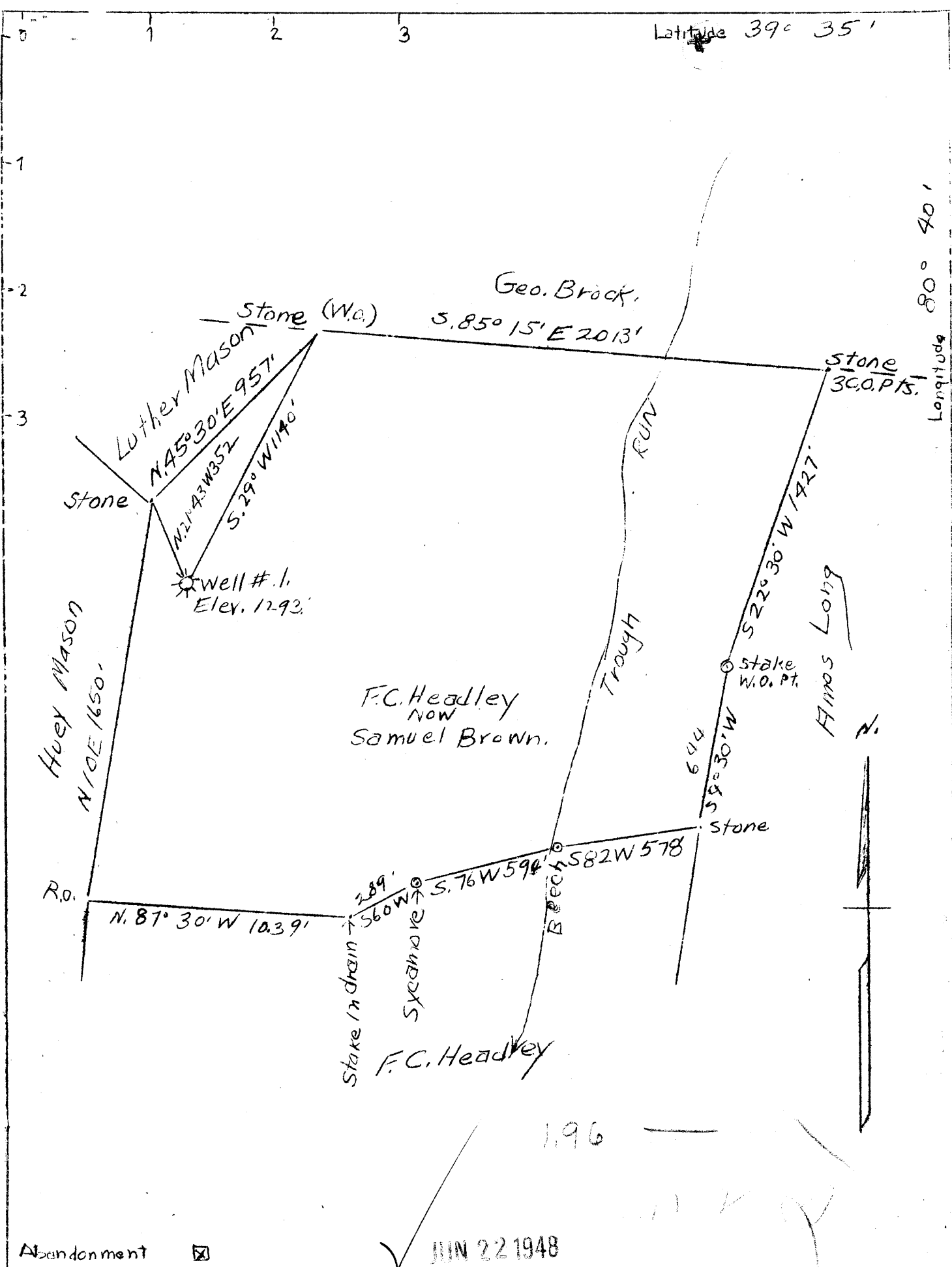


Latitude 39° 35'

Longitude 80° 40'



Abandonment

JUN 22 1948

COMPANY A. M. SNIDER  
 ADDRESS HUNDRED, W. VA.  
 FARM B. F. HEADLEY  
 TRACT 1 ACRES 117 LEASE NO. 31066  
 WELL (FARM) NO. 1 SERIAL NO.  
 ELEVATION (SPIRIT LEVEL) 1293'  
 QUADRANGLE LITTLETON  
 COUNTY WETZEL DISTRICT GREEN  
 ENGINEER A. L. HEADLEY  
 ENGINEER'S REG. NO. \_\_\_\_\_  
 FILE NO. \_\_\_\_\_ DWG. NO. \_\_\_\_\_  
 DATE 5/20/48 SCALE 1"-500'

STATE OF WEST VIRGINIA  
 DEPARTMENT OF MINES  
 OIL AND GAS DIVISION  
 CHARLESTON

WELL LOCATION MAP

FILE NO. WET 670-A

† DENOTES LOCATION OF WELL ON U.S. TOPOGRAPHIC MAPS, SCALE 1 TO 62,500 LATITUDE AND LONGITUDE LINES BEING REPRESENTED BY BORDER LINES AS SHOWN.  
 — DENOTES ONE INCH SPACES ON BORDER LINE OF ORIGINAL TRACING.

B. F. HEADLEY JR., L.

W. L. HEETER —

WET-670-A



1097

STATE OF WEST VIRGINIA  
DEPARTMENT OF MINES  
OIL AND GAS DIVISION

WELL RECORD

Permit No. 670 A Oil or Gas Well Gas  
(KIND)

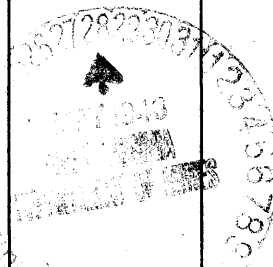
Company A. M. Snider  
Address Hundred, West Virginia  
Farm B. F. Headley Acres 117  
Location (waters) Beech Trough Run  
Well No. One (1) Elev. 1293  
District Greene County Wetzel  
The surface of tract is owned in fee by \_\_\_\_\_  
Address \_\_\_\_\_  
Mineral rights are owned by \_\_\_\_\_  
Address \_\_\_\_\_  
Drilling commenced No Record  
Drilling completed No Record  
Date Shot No Record From \_\_\_\_\_ To \_\_\_\_\_  
With \_\_\_\_\_  
Open Flow /10ths Water in No Record Inch  
/10ths Merc. in Inch  
Volume No Record Cu. Ft.  
Rock Pressure No Record lbs. \_\_\_\_\_ hrs.  
Oil \_\_\_\_\_ bbls., 1st 24 hrs.  
Fresh water No Record feet \_\_\_\_\_ feet  
Salt water No Record feet \_\_\_\_\_ feet

Casing and Tubing	Used in Drilling	Left in Well	Packers
Size			Kind of Packer
16			
13			
10	105'10"	105'10"	Size of
8 1/4			
6 5/8	2166	2166	Depth set
5 3/16	2807	2807	
3			Perf. top
2			Perf. bottom
Liners Used			Perf. top
			Perf. bottom

CASING CEMENTED \_\_\_\_\_ SIZE \_\_\_\_\_ No. Ft. \_\_\_\_\_ Date \_\_\_\_\_

COAL WAS ENCOUNTERED AT 993 FEET 24 INCHES  
\_\_\_\_ FEET \_\_\_\_\_ INCHES FEET \_\_\_\_\_ INCHES  
\_\_\_\_ FEET \_\_\_\_\_ INCHES FEET \_\_\_\_\_ INCHES

Formation	Color	Hard or Soft	Top	Bottom	Oil, Gas or Water	Depth Found	Remarks
Pittsburgh Coal			993	995			
Dunkard Sand			1340	1543			
Salt Sand			1818	2010			
Injun Sand			2200	2442	Gas	2275	
Berea Sand			2580	2620			
Gantz Sand			2630	2680			
Fifty Feet Sand			2805	2810			
Gorden Sand			3004		Gas	3006-3011	
					Gas	3015-3021	
Total Depth				3071			



JUN 23 1948