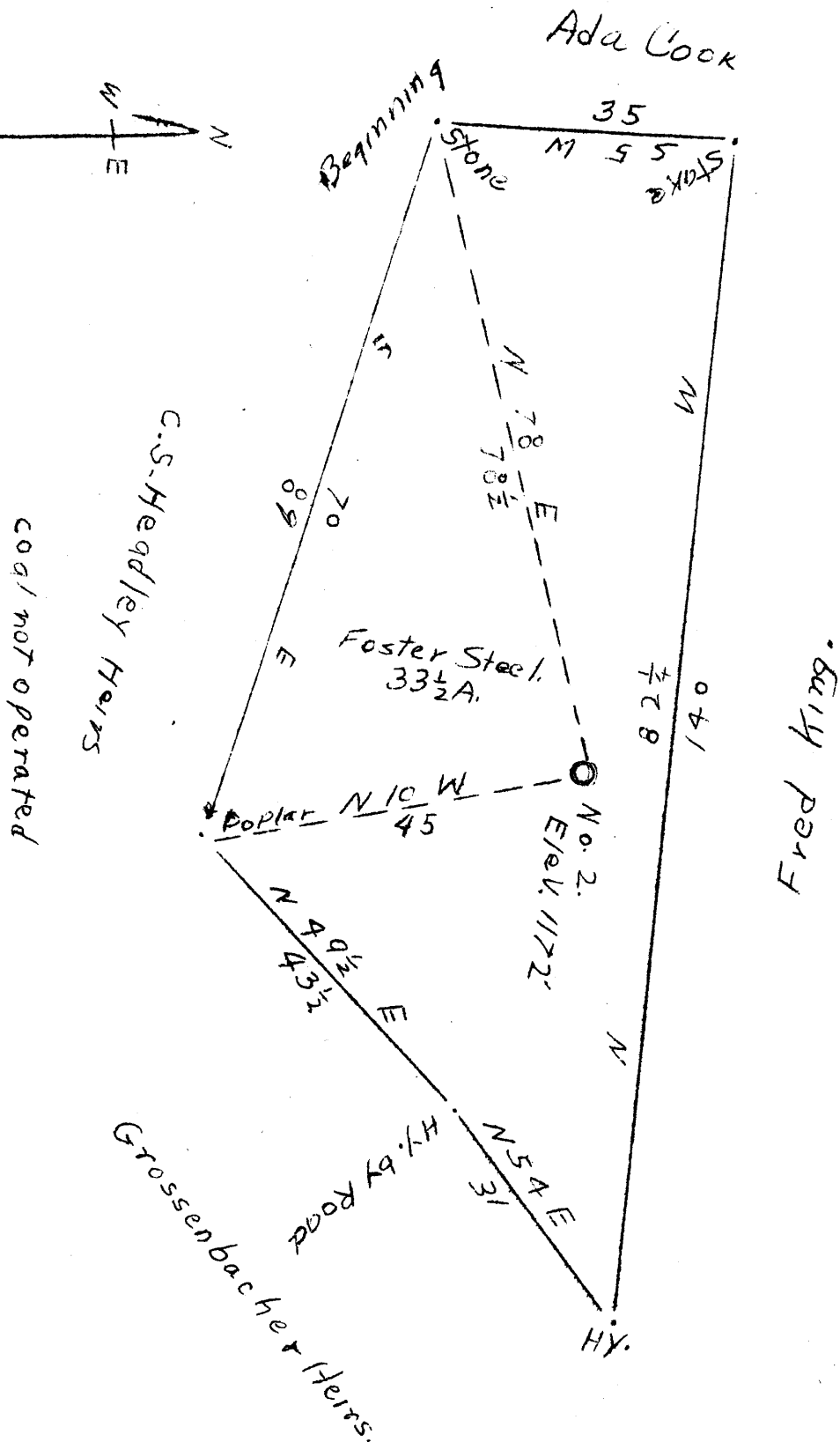
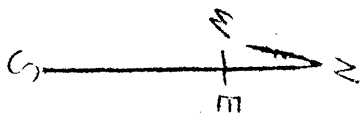


1 2 3

Latitude 39° 40'

Longitude 80° 45'



ABANDONMENT

COMPANY HAMICO GAS & OIL CO.
 ADDRESS UNIONTOWN, PA.
 FARM FOSTER STEEL
 TRACT 1 ACRES 33 1/2 LEASE NO.
 WELL (FARM) NO. 2 SERIAL NO.
 ELEVATION (SPIRIT LEVEL 1172 FEET
 QUADRANGLE NEW MARTINSVILLE
 COUNTY WETZEL DISTRICT GREEN EC
 ENGINEER J. M. COCHRAN
 ENGINEER'S REG. NO. CO. SURVEYOR
 FILE NO. DRAWING NO.
 5/1/48 SCALE 1" 20 RDS.

STATE OF WEST VIRGINIA
 DEPARTMENT OF MINES
 OIL AND GAS DIVISION
 CHARLESTON

WELL LOCATION MAP
 FILE NO. WET 668-A

+ DENOTES LOCATION OF WELL ON U.S. TOPOGRAPHIC MAPS, SCALE 1 TO 62,500 LATITUDE AND LONGITUDE LINES BEING REPRESENTED BY BORDER LINES AS SHOWN.
 - DENOTES ONE INCH SPACES ON BORDER LINE OF ORIGINAL TRACING.

FOSTER STEEL NO. 2 WELL.

Green District, Wetzel County, W. Va.
By Hamico Gas & Oil Co., Uniontown, Pa.
Abandoned under permit Wet-668-A.

On 33 $\frac{1}{2}$ acres.

Elevation, 1172' L.

Drilling completed in 1919.

8 $\frac{1}{4}$ " casing, 1499'; 6 $\frac{3}{8}$ ", 2173'; 2" tubing, 3038'; all left in.

Coal was encountered at 986-999'.

Oil well. Record to Dept. of Mines stamped May 13, 1948.

Record to RCT from Mrs. Griffith Oct. 11, 1948. Old File No. 1142.

	Top.	Bottom.
Pittsburgh Coal	986	- 999
Little Dunkard Sand	1220	- 1385
Big Dunkard Sand	1440	- 1450
1st Salt Sand	1650	- 1710
2nd Salt Sand	1905	- 1960
Maxton Sand	2025	- 2050
Big Line	2150	- 2183
Big Injun Sand	2183	- 2425
Fifty-foot Sand	2770	- 2800
Gordon Stray Sand	3015	- 3018
Gordon Sand (oil, 3021-3025')	3018	- 3026
Total depth		3038

Green District, Wetzel County, W. Va.

Silverhill Oil Co.

On ridge south of Little Fishing Creek, 1.3 mi. southward
from Mand.

Completed, May 30, 1919.

Elevation, 1198'.

	Top.	Bottom.
Coal, Wayneburg "A"	616	- 618
Coal, Pittsburgh	996	- 999
Sand, Little Dunkard (Moundsville)	1320	- 1385
Sand, Big Dunkard	1440	- 1450
Gas Sand	1580	- 1630
Sand, 1 Salt	1650	- 1710
Sand, 2 Salt	1905	- 1960
Sand, Maxton	2025	- 2050
Little Lime	2090	- 2115
Pencil Cave	2115	- 2120
Sand	2120	- 2150
Big Lime	2150	- 2183
Sand, Big Injun (little gas, 2220')	2183	- 2425
Sand, Squaw (B.I.)	2475	- 2500
Sand, Berea	2770	- 2850
Red rock	2856	- 2870
Sand, 30-Ft. (reduced hole to 5" at 2971')	2971	
Sand, Gordon Stray	3015	- 3018
Sand, Gordon (1st oil and gas, 3021½' to 3025½') (SL)	3018	- 3026
Total depth		3038

10" casing, 442', pulled; 8½", 1499', left in; 6-5/8", 2173',
left in; 5-3/16", 208' used as liner, set at 2992 up to 2764'.

Well shot May 31, 1919, with 20 qts. from 3019' 2" to 3025' 11".
Shell 4½ x 6' 9", anchor on bottom of shell 12' 7".

Well produced from 40 to 50 bbls. natural, 24 hrs. after shot.