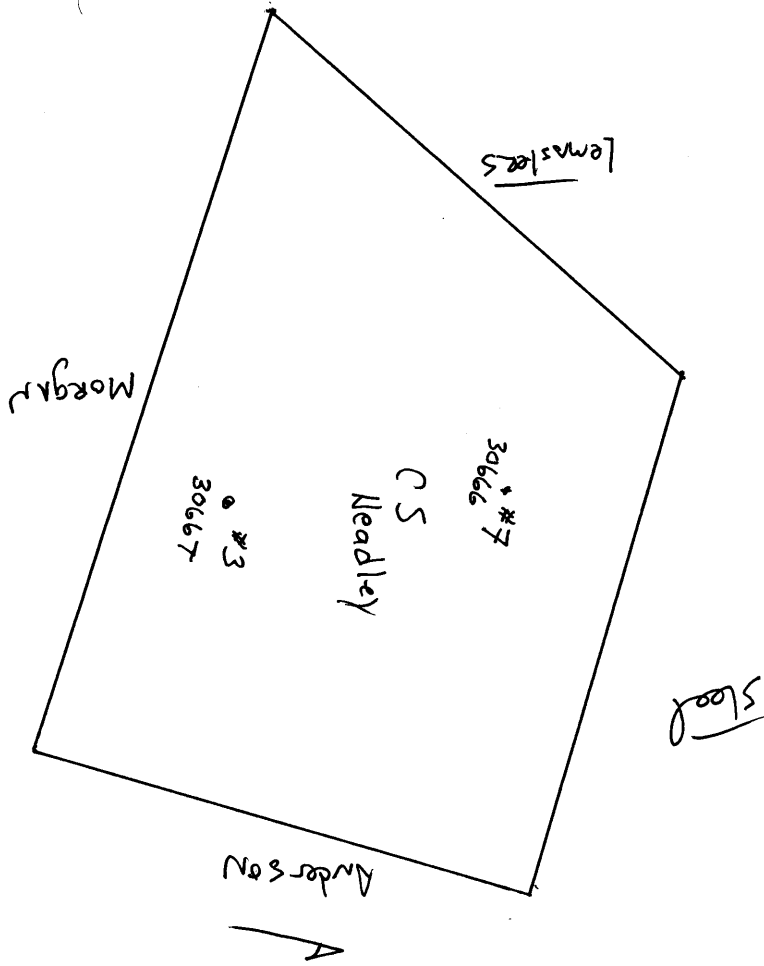


30666

Green





STATE OF WEST VIRGINIA
DEPARTMENT OF MINES
OIL AND GAS DIVISION

1137

WELL RECORD

Permit No. 667-A

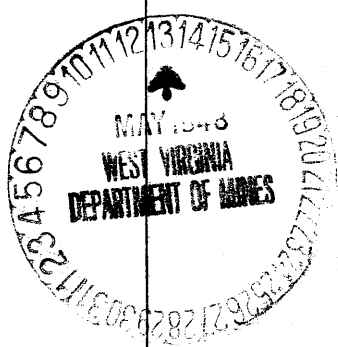
Oil or Gas Well Oil
(KIND)

Company Hancock Gas & Oil Co.
Address Uniontown, Pa.
Farm C. S. Headley Heirs Acres 167
Location (waters) _____
Well No. 3 Elev. 1013
District Green County Netzel
The surface of tract is owned in fee by _____
Address _____
Mineral rights are owned by _____
Address _____
Drilling commenced _____
Drilling completed 1917
Date Shot _____ From _____ To _____
With _____
Open Flow _____ /10ths Water in _____ Inch
_____ /10ths Merc. in _____ Inch
Volume _____ Cu. Ft.
Rock Pressure _____ lbs. _____ hrs.
Oil _____ bbls., 1st 24 hrs.
Fresh water _____ feet _____ feet
Salt water _____ feet _____ feet

Casing and Tubing	Used in Drilling	Left in Well	Packers
Size			Kind of Packer
16			
13			
10			Size of
8 3/4		<u>1299'</u>	
6 3/8		<u>1950'</u>	Depth set
5 3/16			
3			Perf. top
2		<u>2865'</u>	Perf. bottom
Liners Used			Perf. top
			Perf. bottom

CASING CEMENTED _____ SIZE _____ No. Ft. _____ Date _____
COAL WAS ENCOUNTERED AT 820 FEET _____ INCHES
_____ FEET _____ INCHES FEET _____ INCHES
_____ FEET _____ INCHES FEET _____ INCHES

Formation	Color	Hard or Soft	Top	Bottom	Oil, Gas or Water	Depth Found	Remarks
Pgh. Coal			820'	822'			
L.D. Sand			1180'	1222'			
B.D. Sand			1240'	1284'			
1st, Salt Sand			1485'	1535'			
2nd, " "			1595'	1645'			
Maxon Sand			1790'	1830'			
Big Injun			1950'	2251'			
Berea Grit			2610'	2690'			
Gordon Stray			2785'	2823'			
Gordon Sand			2838'	2859'	Oil	2845' - 2852'	
Total Depth			2867'				



O.S. Headley No. 3 Well Record (118-9)(263G)

Green District, Wetzel County, W. VA.; on a branch of Fishing Creek 1.3 miles northeast of Porters Falls; completed in April, 1917; authority, Silverhill Oil Company; elevation, 1027' (from Silverhill map).

	Top. Feet.	Bottom. Feet.
Conductor	14	--
Coal, <u>Washington</u>	375	378
Slate and shells	378	525
Red rock	525	540
Shells	540	550
Coal, <u>Uniontown</u>	550	554
Slate and shells	554	615
Shells	615	630
Shells and slate	630	695
Shells	695	705
Slate	705	800
Lime	800	820
Coal, <u>Pittsburgh</u>	820	824
Slate, <u>black</u>	824	850
Sand, <u>Minshall, Connellsville</u>	850	895
Slate	895	920
Lime	920	940
Slate	940	995
Red rock	995	1020
Shells	1020	1040
Slate	1040	1060
Slate, red	1060	1080
Lime	1080	1100
Slate	1100	1125
Shell and slate	1125	1180
Sand, <u>Moundsville, Saltsburg</u>	1180	1232
Coal, <u>Bakerstown</u>	1232	1235
Slate	1235	1240
Sand, <u>Little Dunkard, Buffalo</u>	1240	1284
Slate	1284	1289
Lime	1289	1330
Slate	1330	1380
Lime	1380	1380
Slate	1380	1405
Gas Sand, <u>Lower Freeport</u>	1405	1535
Slate	1535	1595
Sand, <u>Salt, Upper Connocuenessing</u>	1595	1645

	Top. Feet.	Bottom. Feet.
Slate	1645	1730
Lime and slate.....	1730	1755
Lime	1755	1780
Slate.....	1780	1790
Sand, dark, <u>Maxton</u>	1790	1830
Slate	1830	1855
Lime	1855	1875
Slate	1875	1890
<u>Little Lime</u>	1890	1910
Slate and shells	1910	1950
<u>Big Lime</u>	1950	--
Sand, <u>Big Injun</u>	1950?	2251
Sand, dark	2251	2560
Slate	2560	2610
Sand, <u>Berea</u>	2610	2690
Shells	2690	2710
Red rock	2710	2752
Shells, black	2752	2785
Sand, <u>Gordon Stray</u>	2785	2823
Slate, break	2823	2838
Sand, <u>Gordon</u> (first oil and gas pay, at 2845-2851')	2838	2859
Total depth		2867

Shot with 20 qts. - April 14, 1917.

10" casing, 380' (pulled out); 3 1/2" casing, 1299' (left in);
 6 5/8" casing, 1930' (left in);
 5 3/16" liner, 500', set at 2782' to 2823'.
 2" tubing, 2865', anchor included.

Gordon Sand oil well; produced 40 bbls., natural, first 24
 hours after shot.

