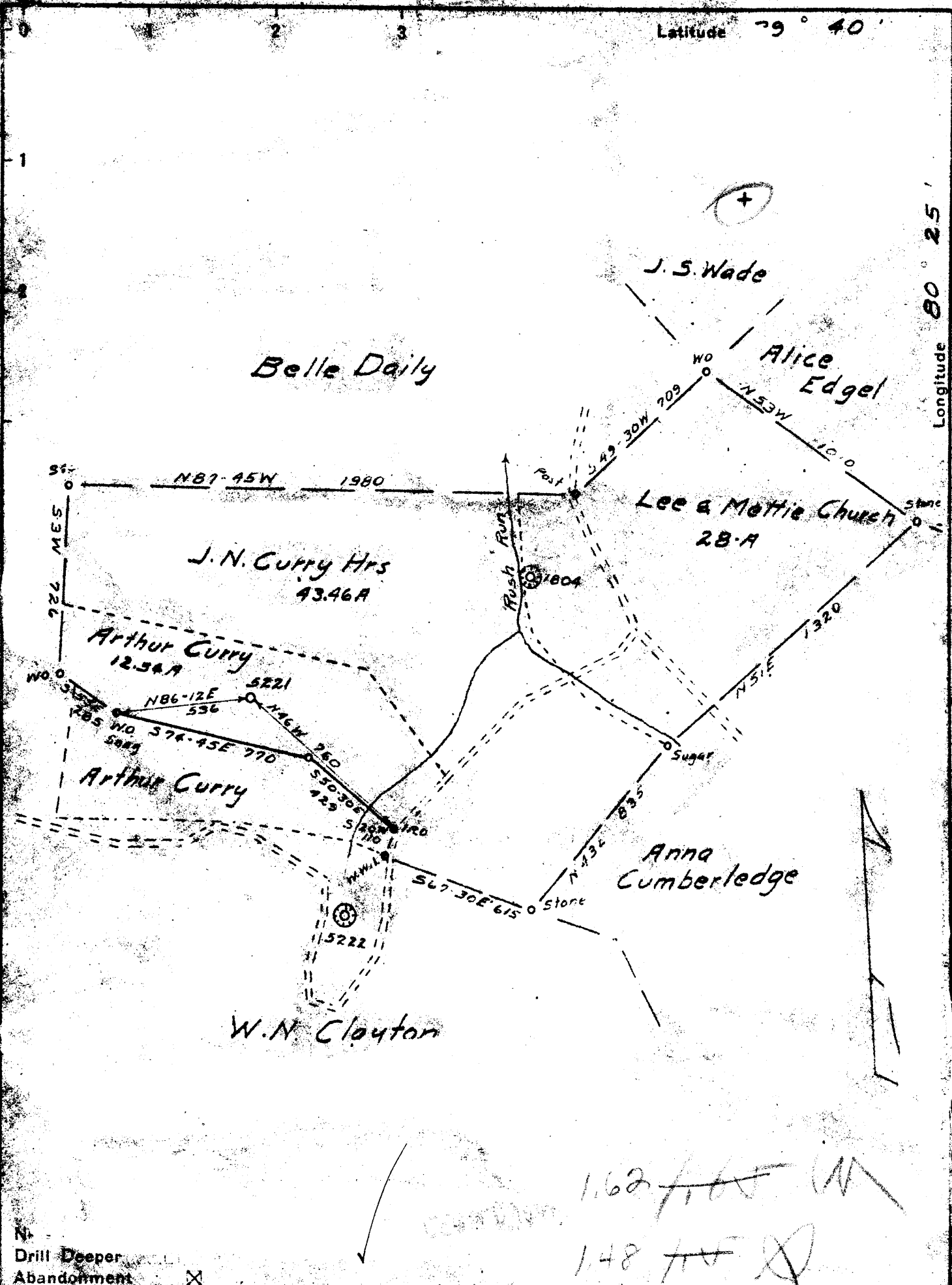


Latitude 39° 40'

Longitude 80° 25'



Drill Deeper

Abandonment

162 feet W

148 feet S

Company Pittsburgh & W.Va Gas Co.

Address Clarksburg, W.Va.

Farm Wm L Cunningham

Tract _____ Acres 84 Lease No. 3503

Well (Farm) No. 2 Serial No. 5221

Elevation (Spirit Level) 1281.0

Quadrangle Mannington N.W. 33

County Wetzel District Church

Engineer James D. Jeffers

Engineer's Registration No. _____

File No. _____ Drawing No. _____

Date 5-6-35 Scale 1" = 500'

STATE OF WEST VIRGINIA
DEPARTMENT OF MINES
OIL AND GAS DIVISION
CHARLESTON

WELL LOCATION MAP
FILE NO. Wet-625-A

+ Denotes location of well on United States Topographic Maps, scale 1 to 62,500, latitude and longitude lines being represented by border lines as shown.

- Denotes one inch spaces on border line of original tracing.

STATE OF WEST VIRGINIA
DEPARTMENT OF MINES
OIL AND GAS DIVISION

1064

WELL RECORD

Permit No.

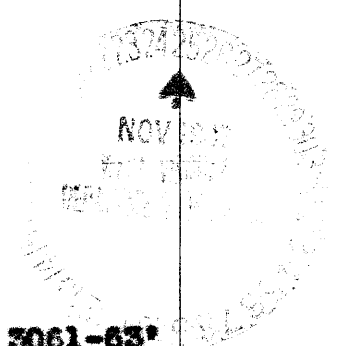
Oil or Gas Well **Gas**
(Kind)

Company **Pittsburgh & West Va Gas Company.**
 Address **Clarksburg, West Va.**
 Farm **W. L. Cunningham** Acres **84**
 Location (waters) **Mann. N/W. 3-4**
 Well No. **5221** Elev. **1281**
 District **Church** County **Wetzel**
 The surface of tract is owned in fee by **Arthur Curry**
 Address **Hundred, W. Va.**
 Mineral rights are owned by **Albert Rush et al.**
805 East Main St. Address Waynesburg, Pa.
 Drilling commenced **February 2nd, 1917**
 Drilling completed **May 29th, 1917.**
 Date shot **5-31-1917** Depth of shot **30 ft. safety**
 Open Flow /10ths Water in Inch
 /10ths Merc. in Inch
 Volume Cu. Ft.
 Rock Pressure lbs. hrs.
 Oil bbls., 1st 24 hrs.
 Fresh water feet feet
 Salt water feet feet

Casing and Tubing	Used in Drilling	Left in Well	Packers
Size			Kind of Packer
16			
13			
10	285	285	Size of
8 1/4	1500	1500	
6 5/8	2230	2230	Depth set
5 3/16			
3			Perf. top
2			Perf. bottom
Runners Used			Perf. top
			Perf. bottom

CASING CEMENTED SIZE No. Ft. Date
 COAL WAS ENCOUNTERED AT **915** FEET **72** INCHES
1018 FEET **72** INCHES FEET INCHES
 FEET INCHES FEET INCHES

Formation	Color	Hard or Soft	Top	Bottom	Oil, Gas or Water	Depth Found	Remarks
Un-recorded			0	915			
M.T. Coal			915	921			
Un-recorded			921	1018			
Pgh. Coal			1018	1024			
Slate & Shells			1024	1085			
Red Rock	Red	Soft	1085	1110			
Lime	Light	Hard	1110	1170			
Red Rock	Red	Soft	1170	1250			
Slate	Light	"	1250	1290			
Red Rock	Red	"	1290	1350			
L. Dunkard	Light	Hard	1350	1400	Gas	1375-80'	
Slate-Shells	"	Hard&Soft	1400	1495			
Big Dunkard	"	Soft	1495	1600			
Slate-Shells	"	Hard&Soft	1600	1676			
Gas Sand	"	Hard	1676	1725			
Slate	Dark	Soft	1725	1770			
1st. Salt Sand	Light	Hard	1770	1821			
Slate	Dark	Soft	1821	1830			
2nd. Salt Sand	Light	Hard	1830	1870			
Slate&Shells	Dark	Soft	1870	1898			
3rd. Salt Sand	Light	Hard	1898	1945			
Lime	White	"	1945	2035			
Slate&Shells	Dark	Hard&Soft	2035	2127			
Maxon Sand	White	Hard	2127	2207			
P. Cave	"	Soft	2207	2209			
Big Lime	"	Hard	2209	2292			
Big Injun	"	"	2292	2495			
Slate&Shells	Dark	Hard&Soft	2495	3017			
Fifty Foot Sand Lt.		Hard	3017	3029			
Slate	Light	Soft	3029	3040			
Thirty Foot Sand-	"	Hard	3040	3067	Gas	3061-63'	
Pink Rock	Pink	Soft	3067	3072			
Gordon Stray	White	Hard&Close	3072	3100	Gas	3085'	
Slate	"	Soft	3100	3112			
Gordon Sand	Light	Hard&Close	3112	3160			
Slate	"	Soft	3160	3205			
4th. Sand	"	Hard	3205	3235			
Slate&Shells	"	Hard&Soft	3235	3370			
Total Depth.....				3370			



Formation	Color	Hard or Soft	Top	Bottom	Oil, Gas or Water	Depth Found	Remarks

Date **January 18th,** 19**40**

PITTSBURGH & WEST VA GAS CO.

APPROVED *[Signature]*, Owner

* By *[Signature]*

(Title)

Record of Well No. 5221

Located on *Wm. L. Cunningham Farm Act. 28*

1916.

Church

District

Wetzel

County *W. Va.*

State

Division

"D"

District No. *11*

Drilled under well Order *728*

Rig built by

John Craig

Began

Jan. 10

1917

Completed *Jan. 18*

1917.

Well drilled by

A. C. Wilson

Began

Feb. 8

1917

Completed *May 29*

1917

Depth of Well

3370

feet

Size of Hole

6 5/8"

Producing

Gas.

Elev: *12816*

CASED WITH

REMARKS

AMOUNT	SIZE	KIND	REMARKS
<i>16'</i>	<i>13"</i>	<i>Wood</i>	
<i>285'</i>	<i>10"</i>	<i>New</i>	
<i>1500'</i>	<i>8 1/4"</i>	<i>New</i>	
<i>2230'</i>	<i>6 7/8"</i>	<i>New</i>	
<i>3086</i>	<i>2"</i>	<i>New.</i>	<i>Rebond - 2-6-40. O.O.B</i>

COAL VEINS

Mapletown 915
921

FORMATIONS

NAME	TOP	BOTTOM	OIL	GAS	WATER	REMARKS
<i>Little Dunkard</i>	<i>1360</i>	<i>1400</i>		<i>1375</i>		<i>show 2" Tub Pulled</i>
<i>Big Dunkard</i>	<i>1495</i>	<i>1600</i>				<i>Box and Chant out</i>
<i>Sand</i>	<i>1676</i>	<i>1725</i>				<i>Jan 1840 Star</i>
<i>1st. salt sand</i>	<i>1770</i>	<i>1826</i>		<i>1770</i>	<i>1775</i>	<i>show</i>
<i>2nd. salt sand</i>	<i>1830</i>	<i>1870</i>				
<i>3rd. salt sand</i>	<i>1898</i>	<i>1945</i>				
<i>Maxon sand</i>	<i>2140</i>	<i>2207</i>				
<i>Big Lime</i>	<i>2209</i>	<i>2272</i>				
<i>Big Dipper</i>	<i>2272</i>	<i>2457</i>		<i>2310</i>		<i>show</i>
<i>Snow sand</i>	<i>2461</i>	<i>2495</i>				
<i>Fifty Foot</i>	<i>3017</i>	<i>3027</i>				
<i>Thirty Foot</i>	<i>3070</i>	<i>3067</i>		<i>3061-63</i>		<i>4 W 1"</i>
<i>Gordon clay</i>	<i>3072</i>	<i>3100</i>		<i>3088</i>		<i>1.8 W 1"</i>
<i>Gordon sand</i>	<i>3112</i>	<i>3130</i>				
<i>Fourth sand</i>	<i>3205</i>	<i>3255</i>				

FIRST PRESSURE TEST IN <i>6 5/8" 1 1/2" CASING</i>				REMARKS			
30 Sec.	0	1.0	lbs. 1.6	1.8	1.8	<i>May 31-1917</i>	
1 Min.	0	1.8	" 2.8	3.0	3.0		<i>shot 40 lbs. Gordon sand.</i>
2 "	1 "	3.2	" 5.0	5.6	5.6	<i>June 7-1917</i>	
5 "	3 "	5 ²	" 5 ²	5	5 ²		<i>shot 60 lbs. Thirty foot sand.</i>
10 "	7 "	10	" 10	11	11		
20 "	15 "	20	" 23	24	24		
30 "	38		" 67				
Rock Pressure 388-14 hrs. in 715-36 hrs.							
Taken <i>May 30-1917</i> ¹⁹ <i>May 31-1917</i> <i>June 7-1917</i>							
By							

WELL TUBED AND PACKED *June 12 1917*
 VIZ:- *149 lbs. 3086 ft. of 2" V.*
1-6 5/8" X 2" O.W. Hook Wall Packer.
4 lbs. 68 ft. of 2" Anchor.
 Reclaimed *40 - O.O.S.*

FIRST PRESSURE TEST IN <i>2"</i> TUBING				REMARKS		
30 Sec.	6		lbs.			<i>4-11-17-1</i>
1 Min.	8		"			
2 "	13		"			
5 "	28		"			
10 "	54		"			
20 "	96		"			
30 "	230		"			
Rock Pressure <i>500-15 hrs</i> in						
Taken <i>June 12-1917</i> ¹⁹						
By						

MATERIAL FOR THIS WELL RECEIVED FROM FOLLOWING SOURCES:

5124 ft. Lumber @ \$20.00 \$102,480 *Leroy Taylor,*
400# Nails *Stock*
1 set Rig Timbers (old) *from Bill 5203*
1 set Rig Irons " " " "
6200 Lumber " " " "
500 ft Lumber (new) @ 20.00 \$10,000 *E. O. Murray,*
36# Nails *\$3,440* *J. F. Hughes*