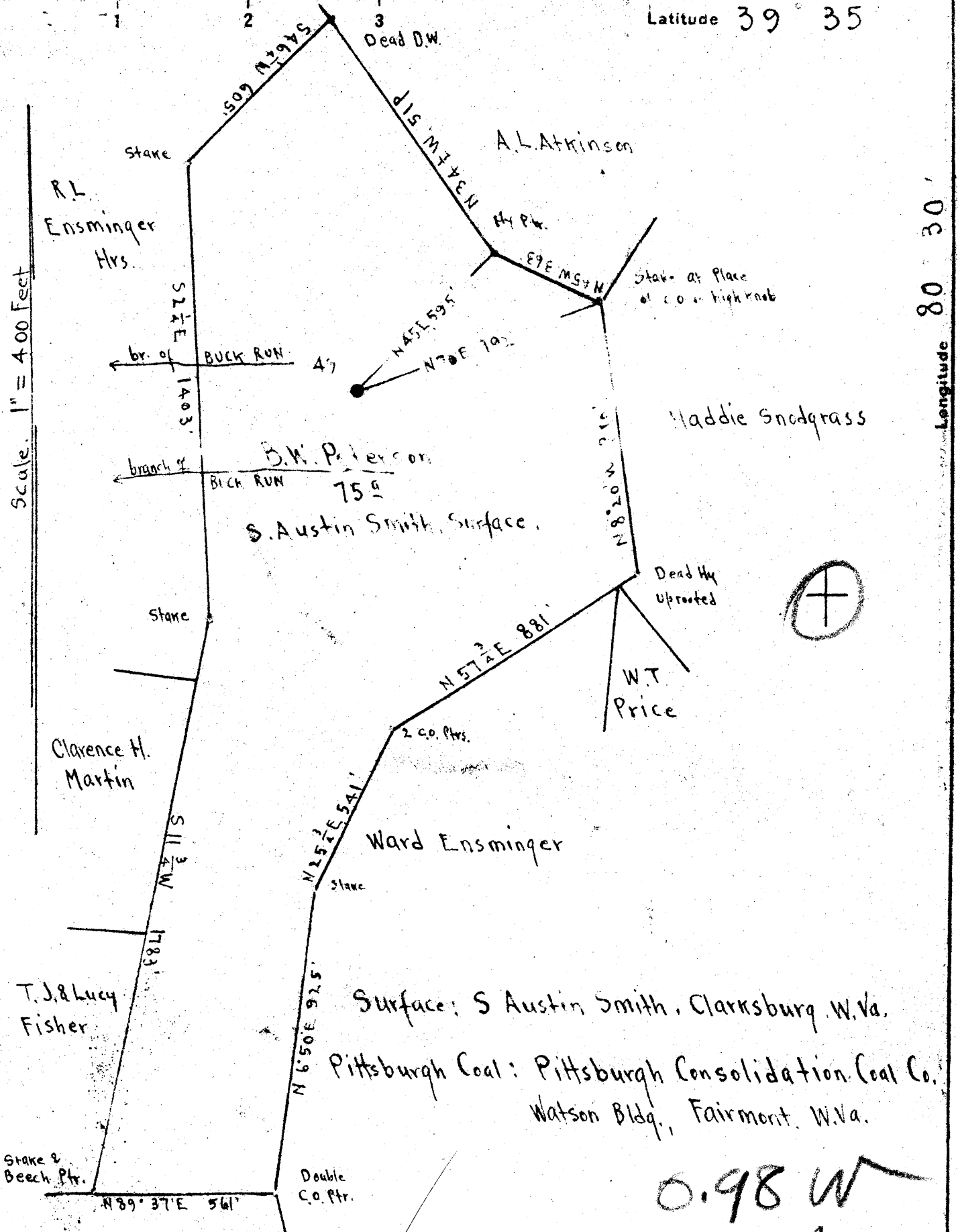


Latitude 39° 35'

Longitude 80° 30'

Scale: 1" = 400 Feet



S. Austin Smith, Surface.  
 Pittsburgh Coal: Pittsburgh Consolidation Coal Co.  
 Watson Bldg., Fairmont, W.Va.

0.98 W  
 4.56 X 16  
 Map N 59 N 5 E 6  
 ✓ OCT - 7 1947

New Location  LE  
 Drill Deeper  Morgan  
 Abandonment

Company Otis Eastern Service Inc.  
 Address Box 435, Bolivar N.Y.  
 Farm B.W. Peterson  
 Tract \_\_\_\_\_ Acres 75 Lease No. \_\_\_\_\_  
 Well (Farm) No. 49 Serial No. \_\_\_\_\_  
 Elevation (Spirit Level) Floor 1152.16  
 Ground 1147.46  
 Quadrangle LITTLETON  
 County Wetzel District Grant  
 Engineer E.C. Tabler  
 Engineer's Registration No. \_\_\_\_\_  
 File No. \_\_\_\_\_ Drawing No. \_\_\_\_\_  
 Date Sept 10<sup>th</sup> 1947 Scale 1" = 400 Feet

STATE OF WEST VIRGINIA  
 DEPARTMENT OF MINES  
 OIL AND GAS DIVISION  
 CHARLESTON

WELL LOCATION MAP  
 FILE NO. Wet-609-A

+ Denotes location of well on United States Topographic Maps, scale 1 to 62,500, latitude and longitude lines being represented by border lines as shown.  
 - Denotes one inch spaces on border line of original tracing.

**JE**



STATE OF WEST VIRGINIA  
DEPARTMENT OF MINES  
OIL AND GAS DIVISION

(1071)

WELL RECORD

Permit No. 1071

Oil or Gas Well **OIL**  
(KIND)

Company **South Penn Natural Gas Company**  
Address **Union Trust Bldg., Parkersburg, W. Va.**  
Farm **B. W. Peterson** Acres **4564**  
Location (waters) \_\_\_\_\_  
Well No. **49** Elev. **1527.75**  
District **Grant** County **Wetzel**  
The surface of tract is owned in fee by \_\_\_\_\_  
Address \_\_\_\_\_  
Mineral rights are owned by \_\_\_\_\_  
Address \_\_\_\_\_

Casing and Tubing	Used in Drilling	Left in Well	Packers
Size			Kind of Packer
16			
13			
10	<b>617'</b>	<b>None</b>	Size of
8 1/4	<b>1465'</b>	<b>80'</b>	
6 3/8	<b>1947'</b>	<b>1947'</b>	Depth set
5 3/16			
3			Perf. top
<b>2" U.E.</b>	<b>2300'</b>	<b>2300'</b>	Perf. bottom
Liners Used			Perf. top
<b>5-3/16"</b>	<b>315'5"</b>	<b>315'5"</b>	Perf. bottom

Drilling commenced \_\_\_\_\_  
Drilling completed \_\_\_\_\_  
Date Shot \_\_\_\_\_ From \_\_\_\_\_ To \_\_\_\_\_  
With **Torpedo Record**  
Open Flow \_\_\_\_\_ /10ths Water in \_\_\_\_\_ Inch  
\_\_\_\_\_ /10ths Merc. in \_\_\_\_\_ Inch  
Volume \_\_\_\_\_ Cu. Ft.  
Rock Pressure \_\_\_\_\_ lbs. \_\_\_\_\_ hrs.  
Oil **60** bbls., 1st 24 hrs.  
Fresh water \_\_\_\_\_ feet \_\_\_\_\_ feet  
Salt water \_\_\_\_\_ feet \_\_\_\_\_ feet

CASING CEMENTED \_\_\_\_\_ SIZE \_\_\_\_\_ No. Ft. \_\_\_\_\_ Date \_\_\_\_\_  
COAL WAS ENCOUNTERED AT **930** FEET **96** INCHES  
\_\_\_\_\_ FEET \_\_\_\_\_ INCHES \_\_\_\_\_ FEET \_\_\_\_\_ INCHES  
\_\_\_\_\_ FEET \_\_\_\_\_ INCHES \_\_\_\_\_ FEET \_\_\_\_\_ INCHES

Formation	Color	Hard or Soft	Top	Bottom	Oil, Gas or Water	Depth Found	Remarks
<b>Conductor</b>				<b>16</b>			
<b>Coal, Pgh.</b>			<b>930</b>	<b>938</b>			
<b>Gas</b>			<b>1755</b>	<b>1780</b>			
<b>Salt Sand</b>			<b>1810</b>	<b>1930</b>			
<b>Big Lime</b>			<b>2155</b>	<b>2226</b>			
<b>Pencil Cove</b>			<b>2145</b>	<b>2155</b>			
<b>Big Injan</b>			<b>2226</b>				
<b>1st. Pay oil -</b>			<b>2315</b>				
<b>Total Depth</b>				<b>2323'</b>			
<b>Torpedo Record</b>							
	<b>Mar. 5, 1901</b>	<b>-----</b>	<b>2311'</b>	<b>-----</b>	<b>20 qts.</b>		
	<b>July 1, 1904</b>	<b>-----</b>	<b>2311'</b>	<b>-----</b>	<b>30 qts.</b>		
	<b>Aug. 6, 1907</b>	<b>-----</b>	<b>2315'</b>	<b>-----</b>	<b>40 qts.</b>		

