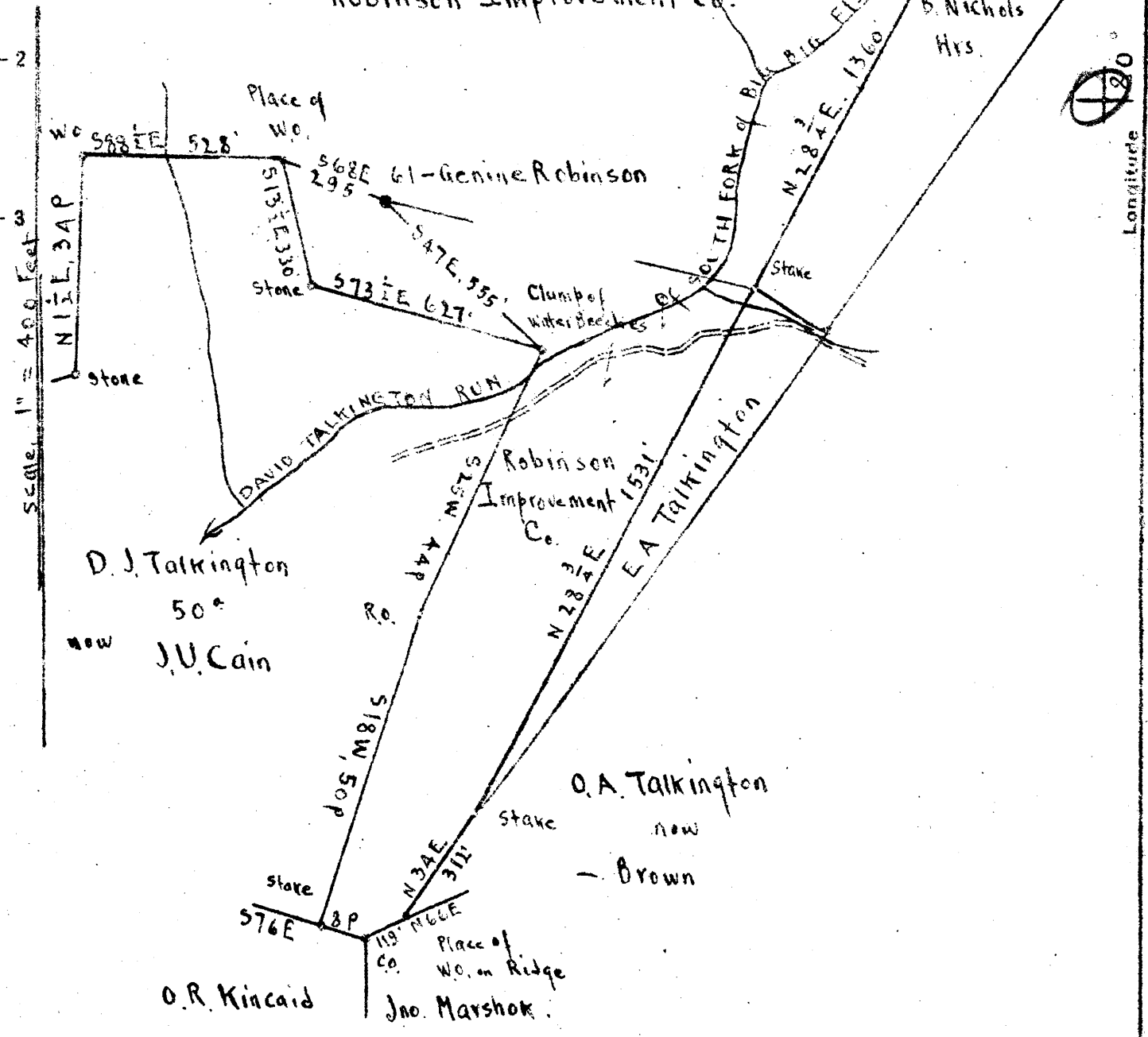


Latitude 39° 30'

Longitude 80° 30'



Surface, Coal & Oil & Gas: Robinson Improvement Co.,  
 The Plains, Fauquier Co., Va.

New Location   
 Drill Deeper   
 Abandonment

SEP 16 1947

*0128W*  
*2.465*  
*NI E T*

Company The Interstate Pipe & Supply Co.  
 Address Marietta Ohio  
 Farm Genine Robinson  
 Tract Acres 2500 Lease No. \_\_\_\_\_  
 Well (Farm) No. 61 Serial No. \_\_\_\_\_  
 Elevation (Spirit Level) Floor 1258.23  
 Ground 1257.13  
 Quadrangle Centerpoint  
 County Wetzel District Gran  
 Engineer E.C. Tabler  
 Engineer's Registration No. \_\_\_\_\_  
 File No. \_\_\_\_\_ Drawing No. \_\_\_\_\_  
 Date July 30<sup>th</sup> 1947 Scale 1" = 400 Feet

STATE OF WEST VIRGINIA  
 DEPARTMENT OF MINES  
 OIL AND GAS DIVISION  
 CHARLESTON

WELL LOCATION MAP  
 FILE NO. WET-602-A

+ Denotes location of well on United States Topographic Maps, scale 1 to 62,500, latitude and longitude lines being represented by border lines as shown.  
 - Denotes one inch spaces on border line of original tracing.



STATE OF WEST VIRGINIA  
DEPARTMENT OF MINES  
OIL AND GAS DIVISION

1066

Permit No. 6021 A

WELL RECORD

Oil or Gas Well Oil  
(X117D)

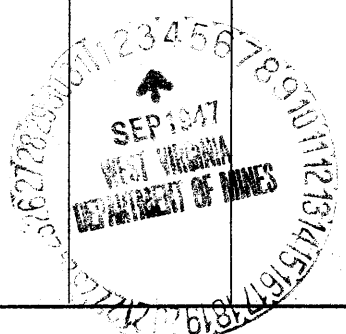
Company The Interstate Pipe & Supply Company  
 Address P.O. Box 611, Marietta, Ohio  
 Farm Genine Robinson Acres 2500  
 Location (waters) David Talkington Run  
 Well No. 61 Elev. 1257.13  
 District Grant County Netzel  
 The surface of tract is owned in fee by Robinson Improvement Company  
Fauquier County Address The Plains, Va.  
 Mineral rights are owned by Robinson Improvement Co.  
Fauquier County Address The Plains, Va.  
 Drilling commenced July 12, 1906  
 Drilling completed Sept. 18, 1906  
 Date Shot 7/15/08 From 3180 To 3220  
 With

Casing and Tubing	Used in Drilling	Left in Well	Packers
Size			Kind of Packer
16			
18			
10	232	none	Size of
8 1/2	1670	none	
6	2375	2375	Depth set
5 3/16	2570	2570	
3			Perf. top
2			Perf. bottom
Liners Used			Perf. top
			Perf. bottom

Open Flow /10ths Water in \_\_\_\_\_ Inch  
 \_\_\_\_\_ /10ths Merc. in \_\_\_\_\_ Inch  
 Volume \_\_\_\_\_ Cu. Ft.  
 Rock Pressure \_\_\_\_\_ lbs \_\_\_\_\_ hrs.  
 Oil \_\_\_\_\_ bbls., 1st 24 hrs.  
 Fresh water \_\_\_\_\_ feet \_\_\_\_\_ feet  
 Salt water \_\_\_\_\_ feet \_\_\_\_\_ feet

CASING CEMENTED \_\_\_\_\_ SIZE \_\_\_\_\_ No. Ft. \_\_\_\_\_ Date \_\_\_\_\_  
 COAL WAS ENCOUNTERED AT 1134 FEET 72 INCHES  
 \_\_\_\_\_ FEET \_\_\_\_\_ INCHES \_\_\_\_\_ FEET \_\_\_\_\_ INCHES  
 \_\_\_\_\_ FEET \_\_\_\_\_ INCHES \_\_\_\_\_ FEET \_\_\_\_\_ INCHES

Formation	Color	Hard or Soft	Top	Bottom	Oil, Gas or Water	Depth Found	Remarks
Conductor				16			
Pittsburgh Coal			1134	1140			
Big Dunkard Sand			1584	1644			
Salt Sand			1970	2144			
Big Lime			2333	2395			
Big Injun			2400	2496			
Fifty Foot			2976	2996			
Thirty Foot			3079	3104			
Stray Sand			3130	3203			
Gordon Sand			3215	3232			
Total Depth				3245			



Formation	Color	Hard or Soft	Top	Bottom	Oil, Gas or Water	Depth Found	Remarks

Date September 2, 194 7

APPROVED THE INTERSTATE PIPE & SUPPLY COMPANY, Owner

By Adolph Beren  
(Title)