

Latitude

Longitude

+ 2.52s
.83w

Topo Location

7.5' Loc. _____ 15' Loc. _____
_____ (calc.) _____

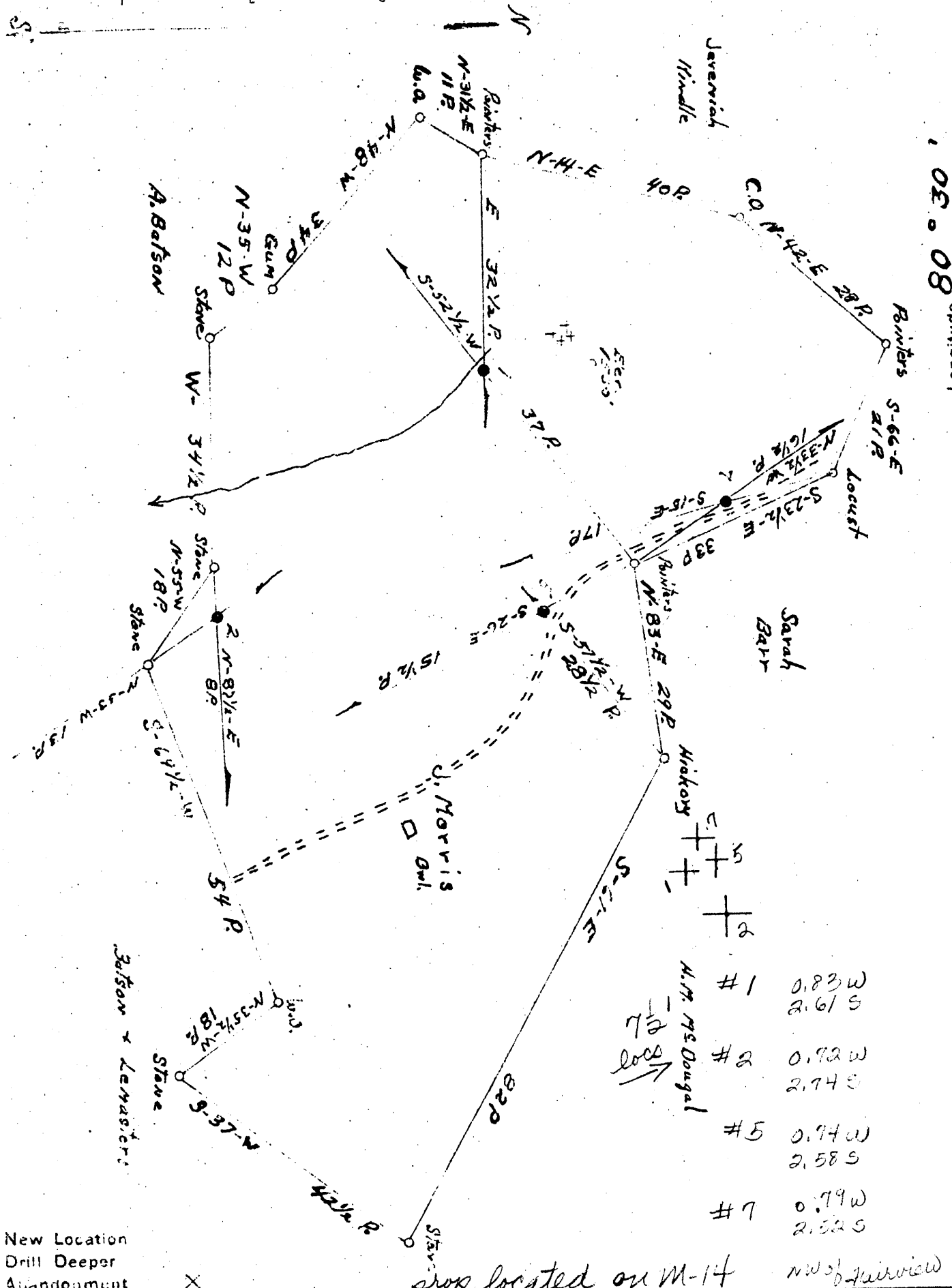
Company American Oil Dev. Co
Farm J Mours #7
15' Quad _____
(sec.) _____
7.5' Quad Big Run
District Grant

WELL LOCATION PLAT

County 103 Permit 30569

10E122.03

Longitude 80° 08'



#1	0.83 W	2.61 S
#2	0.92 W	2.74 S
#5	0.74 W	2.58 S
#7	0.79 W	2.52 S

W.M. McDougal
NW of Fairview

New Location
Drill Deeper
Abandonment

Company American Oil Development Co.
 Address Sistersville W. Va.
 Farm J. Morris
 Tract _____ Acres 75 Lease No. _____
 Well (Farm) No. 1257 Serial No. 1-1222.59 2-1300.0
 Elevation (Spirit Level) 5-1462.85 7-1426.4
 Quadrangle Littleton SE
 County Welzel District Grant
 Engineer J. S. Hought
 Engineer's Registration No. _____
 File No. _____ Drawing No. _____
 Date 4-16-47 Scale 1" = 2000'

STATE OF WEST VIRGINIA
 DEPARTMENT OF MINES
 OIL AND GAS DIVISION
 CHARLESTON

WELL LOCATION MAP
 FILE NO. WET-564-A-#1
WET-565-A; #2; 568-A; #5; 569-A; #1

+ Denotes location of well on United States Topographic Maps, scale 1 to 62,500. latitude and longitude lines being represented by border lines as shown.

- Denotes one inch spaces on border line of original tracing.

Big Run 7 1/2

STATE OF WEST VIRGINIA
 COUNTY OF MASON
 LAWRENCE PATTY and JAMES HAUGHT
 being first duly sworn according to law depose and say that they are experienced in the work
 plugging and filling oil and gas wells and were employed by American Oil Development
 well operator, and participated in the work of plugging and filling the above well, that said work
 was commenced on the 5th day of August, 1947, and that the well was plugged
 and filled in the following manner:

AFFIDAVIT

STATE OF WEST VIRGINIA,
 County of Mason

Lawrence Patty and James Haught
 being first duly sworn according to law depose and say that they are experienced in the work
 plugging and filling oil and gas wells and were employed by American Oil Development
 well operator, and participated in the work of plugging and filling the above well, that said work
 was commenced on the 5th day of August, 1947, and that the well was plugged
 and filled in the following manner:

BAND OR ZONE RECORD FORMATION	FILLING MATERIAL		PLUGS USED SIZE & KIND	CASINGS CROSS PULLED
	CONTENT	FROM TO		
Big Injun	Bridge	at 2518', 2 sacks	Cement, 5' stone on bridge	2400' 3/4"
	Red Clay	2420'		
	Neat Cement	2420' 2410'		
No doubt Pitts, Coal at 1150'	Bridge	at 2030', 2 sacks	cement, 5' stone on bridge	500' 6-5/8"
	Red Clay	1910'		
	Neat Cement	1910' 1900'		
No doubt Pitts, Coal at 1150'	Bridge	at 1200', 2 sacks	cement, 5' stone on bridge	
	Red Clay	1080'		
	Neat Cement	1080' 1070'		
	Bridge	at 800', 2 sacks	cement, 5' stone on bridge	
	Clay	Surface		
COAL BEAMS	5 1/2"			
(NAME)	MADE OF CEMENT SHOWING			DESCRIPTION OF MONUMENT made of cement showing of well operator, farm number of well, and abandoned.
(NAME)				
(NAME)				
(NAME)				

and that the work of plugging and filling said well was completed on the 9th day of September, 1947.

And further deponents saith not.

Lawrence Patty
James Haught