

Latitude

Longitude

1465
.75w

Topo Location

7.5' Loc. _____ 15' Loc. _____
(calc.) _____

Company Little Creek Oil Co

Farm John Kock

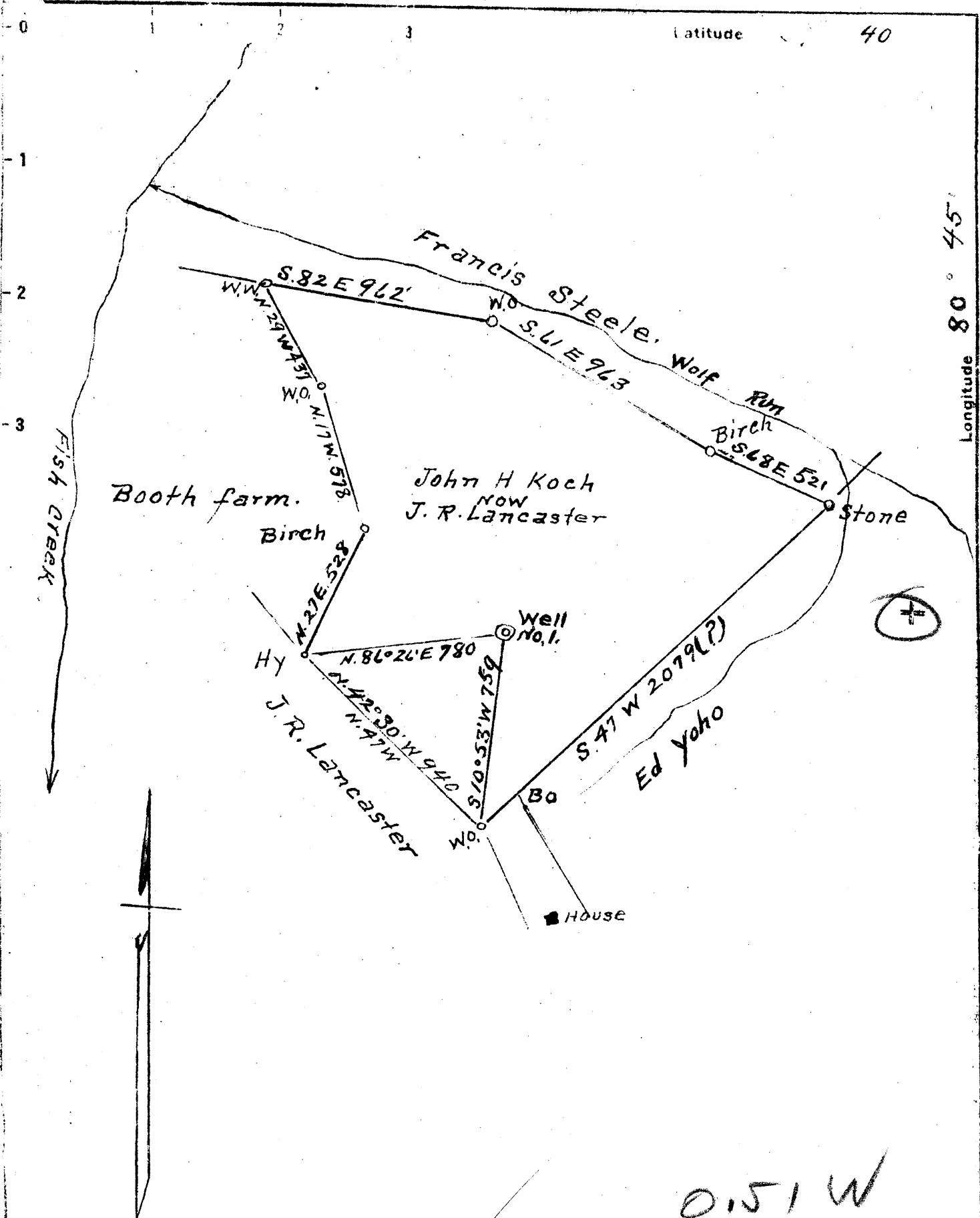
15' Quad _____
(sec.)

7.5' Quad Peters Falls

District Green

WELL LOCATION PLAT

County 103 Permit 567



New Location
 Drill Deeper
 Abandonment

✓ APR 26 1947

0.51 W
 4.59 4.64

Company Little Creek Oil Co.
 Address Hundred, W Va.
 Farm John H. Koch
 Tract ONE Acres 56 Lease No. _____
 Well (Farm) No. ONE Serial No. _____
 Elevation (Spirit Level) 1195
 Quadrangle New Martinsville
 County Wetzel District Green
 Engineer A. L. Headley
 Engineer's Registration No. _____
 File No. _____ Drawing No. _____
 Date 4-1-1947 Scale 1 inch = 500 ft

STATE OF WEST VIRGINIA
 DEPARTMENT OF MINES
 OIL AND GAS DIVISION
 CHARLESTON

WELL LOCATION MAP
 FILE NO. WET-567-A

+ Denotes location of well on United States Topographic Maps, scale 1 to 62,500. latitude and longitude lines being represented by border lines as shown.

- Denotes one inch spaces on border line of original tracing.

(now J. R. Lancaster)
 JOHN H. KOCH (No. 1) - LITTLE CREEK OIL CO. - WET-567-A