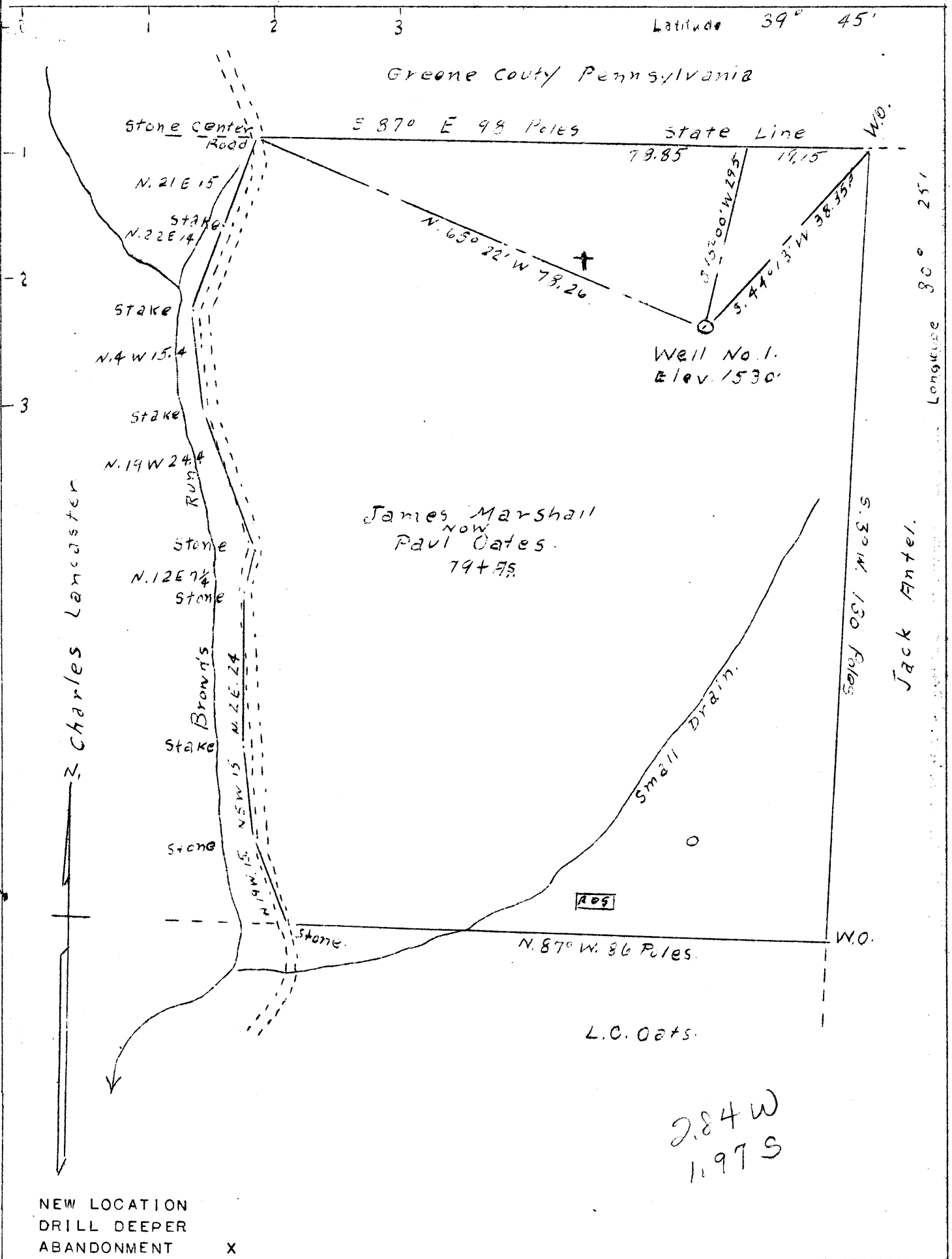


Latitude 39° 45'

Greene County Pennsylvania



NEW LOCATION
DRILL DEEPER
ABANDONMENT X

COMPANY HAUGHT OIL COMPANY
 ADDRESS HUNDRED, W. VA.
 FARM JAMES MARSHALL-NOW-PAUL OATES
 TRACT ONE ACRES 79.19 LEASE NO.
 WELL (FARM) NO. ONE SERIAL NO.
 ELEVATION (SPIRIT LEVEL) 1530
 QUADRANGLE MANNINGTON NW
 COUNTY WETZEL DISTRICT CLAY
 ENGINEER A. L. HEADLEY
 ENGINEER'S REGISTRATION NO.
 FILE NO. DRAWING NO.
 DATE 7-9-46 SCALE 1" = 20 POLES

STATE OF WEST VIRGINIA
 DEPARTMENT OF MINES
 OIL AND GAS DIVISION
 CHARLESTON
 WELL LOCATION MAP
 FILE NO. WET-558-A

+ DENOTES LOCATION OF WELL ON UNITED STATES TOPOGRAPHIC MAPS, SCALE 1 TO 62,500, LATITUDE AND LONGITUDE LINES BEING REPRESENTED BY BORDER LINES AS SHOWN.

— DENOTES ONE INCH SPACES ON BORDER LINE OF ORIGINAL TRACING.

WET-558-A

Clay District, Wetzel County, W. Va.

South Penn Oil Co.

Completed, March 6, 1904.

Elevation, 1370'±

Oil well.

	Top.	Bottom.
Pittsburgh Coal	1078	1085
Big Lime	2255	2325
Big Injun Sand	2325	2555
30-Ft. (Berea) Sand	2898	2930
50-Ft. (Gantz) Sand	3058	3088
Gordon (30-Ft.) Sand (gas, 3142')	3128	3148
4th (Gordon) Sand	3240	3255
5th (4th) Sand (oil, 3281')	3281	
Total depth		3292