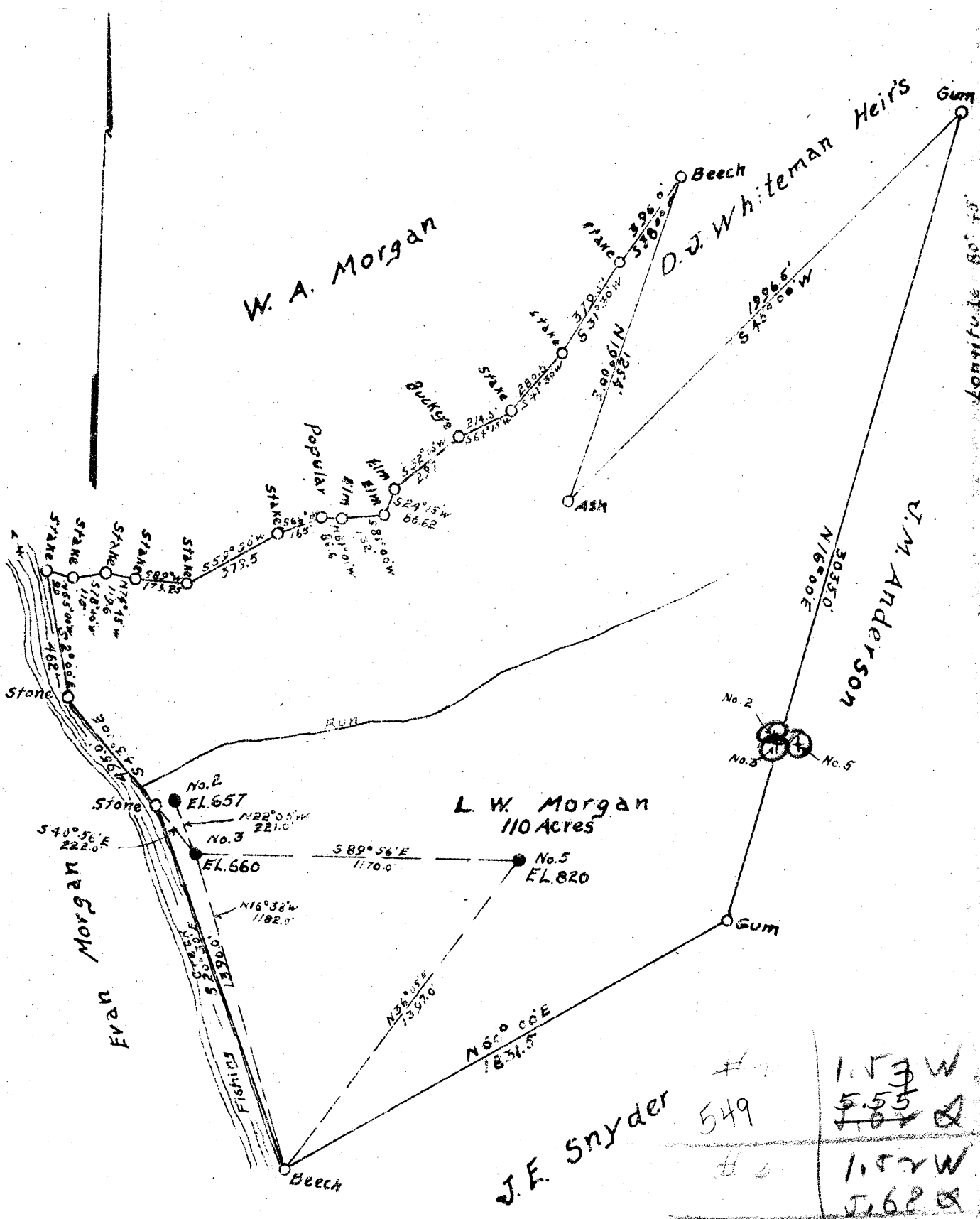


Latitude 39°40'

Longitude 80°45'



New Location  
 Drill Deeper  
 Abandonment.....

✓ ✓ ✓  
 DEC 11 1940

#1	1.53 W
549	5.55
#2	1.52 W
#3	1.62
#4	1.4 W
#5	57

Company Rawe Brothers  
 Address New Martinsville W. Va.  
 Farm L. W. Morgan  
 Tract \_\_\_\_\_ Acres 110 Lease No. 3-P  
 Well (Farm) No. 2, 3 & 5 Serial No. \_\_\_\_\_  
 Elevation No. 2, 657, No. 3, 660 No. 5, 820  
 Quadrangle New Martinsville **EC**  
 County WETZEL District Green  
 Engineer Wm. Intire  
 Engineer's Registration No. 1187  
 File No. \_\_\_\_\_ Drawing No. \_\_\_\_\_  
 Date Nov 23, 1940 Scale 1" = 500'

STATE OF WEST VIRGINIA  
 DEPARTMENT OF MINES  
 OIL AND GAS DIVISION  
 CHARLESTON

WELL LOCATION MAP  
 FILE NO. WET-549-A-#2

+ Denotes location of well on United States Topographic Maps, scale 1 to 62,500, latitude and longitude lines being represented by border lines as shown.

- Denotes one inch spaces on border line of original tracing



STATE OF WEST VIRGINIA  
DEPARTMENT OF MINES  
OIL AND GAS DIVISION

1012

WELL RECORD

Permit No. Wet-549 *A*

Oil or Gas Well Oil  
(KIND)

Company Rawe Brothers  
Address New Martinsville, W. Va.  
Farm L. W. Morgan Acres 110  
Location (waters) \_\_\_\_\_  
Well No. 2 Elev. 657  
District Green County Wetzel  
The surface of tract is owned in fee by \_\_\_\_\_  
Address \_\_\_\_\_  
Mineral rights are owned by \_\_\_\_\_  
Address \_\_\_\_\_  
Drilling commenced June 1924  
Drilling completed July 24, 1924  
Date Shot 2-24-25 From 1749 To 1756  
With \_\_\_\_\_

Casing and Tubing	Used in Drilling	Left in Well	Packers
Size			
16			Kind of Packer
13			
10	217'	None	Size of
8 3/4	996'	"	
6 5/8	1594'	1594'	Depth set
5 3/16			
3			Perf. top
2	1782'	1782'	Perf. bottom
Liners Used			Perf. top
			Perf. bottom

Open Flow \_\_\_\_\_ /10ths Water in \_\_\_\_\_ Inch  
\_\_\_\_\_ /10ths Merc. in \_\_\_\_\_ Inch  
Volume \_\_\_\_\_ Cu. Ft.  
Rock Pressure \_\_\_\_\_ lbs. \_\_\_\_\_ hrs.  
Oil 45 \_\_\_\_\_ bbls., 1st 24 hrs.  
Fresh water 30 \_\_\_\_\_ feet 590' \_\_\_\_\_ feet  
Salt water 1775 \_\_\_\_\_ feet \_\_\_\_\_ feet

CASING CEMENTED \_\_\_\_\_ SIZE \_\_\_\_\_ No. Ft. \_\_\_\_\_ Date \_\_\_\_\_

COAL WAS ENCOUNTERED AT 477' FEET 1077' INCHES  
\_\_\_\_\_ FEET \_\_\_\_\_ INCHES \_\_\_\_\_ FEET \_\_\_\_\_ INCHES  
\_\_\_\_\_ FEET \_\_\_\_\_ INCHES \_\_\_\_\_ FEET \_\_\_\_\_ INCHES

Formation	Color	Hard or Soft	Top	Bottom	Oil, Gas or Water	Depth Found	Remarks
Clay			0	10			
Gravel			10	30	Water	30'	Creek water
Slate, lime, red rock			30	295			
Sand, lime, slate and lime			410	477			
Coal			477	479	Water	590'	
Slate, sand, lime, red rock			479	700	<i>Ar-670'</i>		
Shale			700	755			
Sand, red rock, slate			755	844			
Little Dunkard sand			844	860	<i>P-234'</i>		
Slate, lime and slate			906	994			
Big Dunkard sand			994	1008	<i>M-176'</i>		<i>8" casing cut</i>
Slate and lime			1008	1077			
Show of coal				1077			
Sand, slate, lime			1077	1534	<i>P-1480'</i>		
Maxton sand			1534	1562			
Slate			1562	1569			
Little lime			1569	1575			
Slate			1575	1585	<i>P-1670'</i>		
Big lime			1585	1640			
Injun sand			1640		Oil	1750	
					Salt water	1755	
Total depth				1784			

Formation	Color	Hard or Soft	Top	Bottom	Oil, Gas or Water	Depth Found	Remarks

Date \_\_\_\_\_, 194\_\_

APPROVED \_\_\_\_\_, Owner

By \_\_\_\_\_ (Title)

