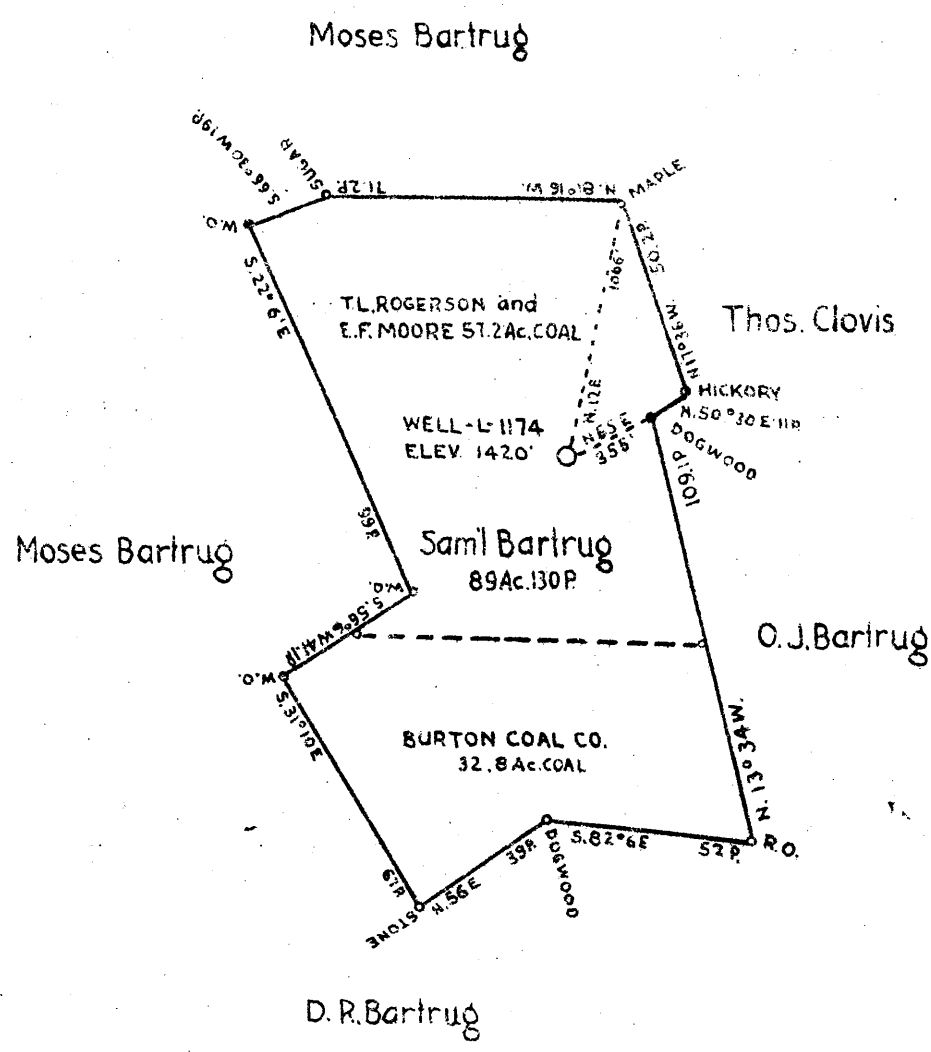


7 1/2  
loc  
0.38w  
0.01S



~~595~~  
~~5830~~  
~~07 27 39046~~  
0744W

found on prop maps N 12413

ALL OWNED BY... I.L. ROGERSON 1/2 INT. MOUNDSVILLE W.VA.  
EVERETT F. MOORE 1/2 INT. " " " "

W LOCATION   
DEEPER   
ENDONMENT

JAN 13 1947

1946

COMPANY THE MANUFACTURERS LIGHT AND HEAT COMPANY  
 ADDRESS 800 UNION TRUST BUILDING PITTSBURGH PA.  
 NAME SAMUEL BARTRUG NOW SARAH BARTRUG  
 ACREAGE ACRES 89Ac 130P LEASE NO. 2995  
 WELL (FARM) NO. 1 SERIAL NO. 1174  
 ELEVATION (SPIRIT LEVEL) 1420'  
 ADJACENT MANNINGTON  
 COUNTY WETZEL DISTRICT CHURCH  
 SURVEYER J. Mercer  
 SURVEYER'S REGISTRATION NO.  
 DATE NOVEMBER 21-45 DRAWING NO. Y-11-291  
 SCALE 1" = 800'

STATE OF WEST VIRGINIA  
DEPARTMENT OF MINES  
OIL AND GAS DIVISION  
CHARLESTON

WELL LOCATION MAP  
FILE NO. WET-548-A

⊕ DENOTES LOCATION OF WELL ON UNITED STATES TOPOGRAPHIC MAPS. SCALE 1 TO 62,500. LATITUDE AND LONGITUDE LINES BEING REPRESENTED BY BORDER LINES AS SHOWN.

--- DENOTES ONE INCH SPACES ON BORDER LINE OF ORIGINAL TRACING.

Hundred 7 1/2

103-548A

Samuel (Sarah) Bartrug No. 1-1174 Well (260)

Church Dist., Wetzel Co., W. Va.; on hill east of West Virginia Fork of Fish Creek 0.4 mile east of Burton; completed June 7, 1904; by Manufacturers Light & Heat Co.; elevation, 1420'.

	Top. Feet.	Bottom. Feet.
Sand, <u>Bluff, Waynesburg</u> .....	800	--
Coal, <u>Pittsburgh</u> .....	1200	--
Sand, <u>Little Dunkard, Buffalo</u> .....	1585	--
Sand, <u>Big Dunkard, Mahoning</u> .....	1675	1725
Gas Sand, <u>Lower Freeport</u> .....	1820	1890
Sand, <u>Salt, Upper Connoquenessing</u> .....	2100	2215
Sand, <u>Maxton, Droop</u> .....	2315	2370
<u>Big Lime</u> .....	2375	2435
Sand, <u>Big Injun</u> .....	2435	2680
Sand, <u>Fifty-foot</u> .....	2975	3000
Sand, <u>Thirty-foot</u> .....	3155	3210
Sand, <u>Gordon Stray</u> .....	3220	3250
Sand, <u>Gordon</u> .....	3270	3285
slate, <u>black</u> .....	3325	3305
Sand, <u>Fourth</u> .....	3396	3420
slate .....	3429	--
Total depth .....		3429

6 5/8" cas., 3405' (left in); 3" tubing, 2475'.  
 Packer set at 2475'.  
 Fourth Sand gas well.



STATE OF WEST VIRGINIA  
DEPARTMENT OF MINES  
OIL AND GAS DIVISION

1014

AD 548-A  
Permit No. \_\_\_\_\_

Oil or Gas Well Gas  
(KIND)

WELL RECORD

Company The Mfrs. Light & Heat Company  
 Address 800 Union Trust Bldg., Pgh. Penna.  
 Farm Samuel Bartrug Acres 80  
 Location (waters) \_\_\_\_\_  
 Well No. 1174 Elev. 1120'  
 District Church County Wetzel  
 The surface of tract is owned in fee by Sarah E. Bartrug  
Burton, W. Va. Address \_\_\_\_\_  
 Mineral rights are owned by The Mfrs. Lt. & Ht. Company  
800 Union Trust Bldg. Address Pittsburgh, Penna.  
 Drilling commenced March 17th, 1904  
 Drilling completed June 7th, 1904  
 Date Shot \_\_\_\_\_ From \_\_\_\_\_ To \_\_\_\_\_  
 With \_\_\_\_\_  
 Open Flow \_\_\_\_\_ /10ths Water in \_\_\_\_\_ Inch  
 \_\_\_\_\_ /10ths Merc. in \_\_\_\_\_ Inch  
 Volume \_\_\_\_\_ Cu. Ft.  
 Rock Pressure \_\_\_\_\_ lbs \_\_\_\_\_ hrs.  
 Oil \_\_\_\_\_ bbls., 1st 24 hrs.  
 Fresh water \_\_\_\_\_ feet \_\_\_\_\_ feet  
 Salt water \_\_\_\_\_ feet \_\_\_\_\_ feet

Casing and Tubing	Used in Drilling	Left in Well	Packers
Size			Kind of Packer
16			
13			
10			Size of
8 1/4			
6 3/4	✓ 2405	2405	Depth set
5 3/16			
3 1/2	✓ 2475	2475	Perf. top
4"			Perf. bottom
Liners Used			Perf. top
			Perf. bottom

CASING CEMENTED \_\_\_\_\_ SIZE \_\_\_\_\_ No. Ft. \_\_\_\_\_ Date \_\_\_\_\_  
 COAL WAS ENCOUNTERED AT 800 FEET \_\_\_\_\_ INCHES  
 \_\_\_\_\_ FEET \_\_\_\_\_ INCHES \_\_\_\_\_ FEET \_\_\_\_\_ INCHES  
 \_\_\_\_\_ FEET \_\_\_\_\_ INCHES \_\_\_\_\_ FEET \_\_\_\_\_ INCHES

Formation	Color	Hard or Soft	Top	Bottom	Oil, Gas or Water	Depth Found	Remarks
Sand, Slate & Shells			0	800			
Bluff Sand			800				
Pittsburgh Coal			1200				
Little Dunkard Sand			1585				
Big Dunkard Sand			1675	1725			
Slate & Shells			1725	1820			
Gas Sand			1820	1890			
Slate & Shells			1890	2100			
Salt Sand			2100	2215			
Slate & shells			2215	2315			
Maxop Sand			2315	2370			
Slate & shells			2370	2375			
Big Lime			2375	2435			
Big Injun Sand			2435	2680			
Slate & shells			2680	2975			
Thirty Foot Sand			2975	3000			
Slate & Shells			3000	3155			
Fifty Foot Sand			3155	3210			
Slate & shells			3210	3220			
Stray Sand			3220	3250			
Slate & shells			3250	3270			
Gordon Sand			3270	3285			
Slate & shells			3285	3325			
Black Slate			3325	3365			
Slate & shells			3365	3396			
Fourth Sand			3396	3420			
Slate			3420	3429			
Total Depth			3429				

Packer placed 45 feet in Big Injun Sand at 2475'



Formation	Color	Hard or Soft	Top	Bottom	Oil, Gas or Water	Depth Found	Remarks

Date November 5th, 1946

APPROVED THE MANUFACTURERS LIGHT & HEAT COMPANY, Owner

By Paul Cooper LAND AGENT.  
(Title)