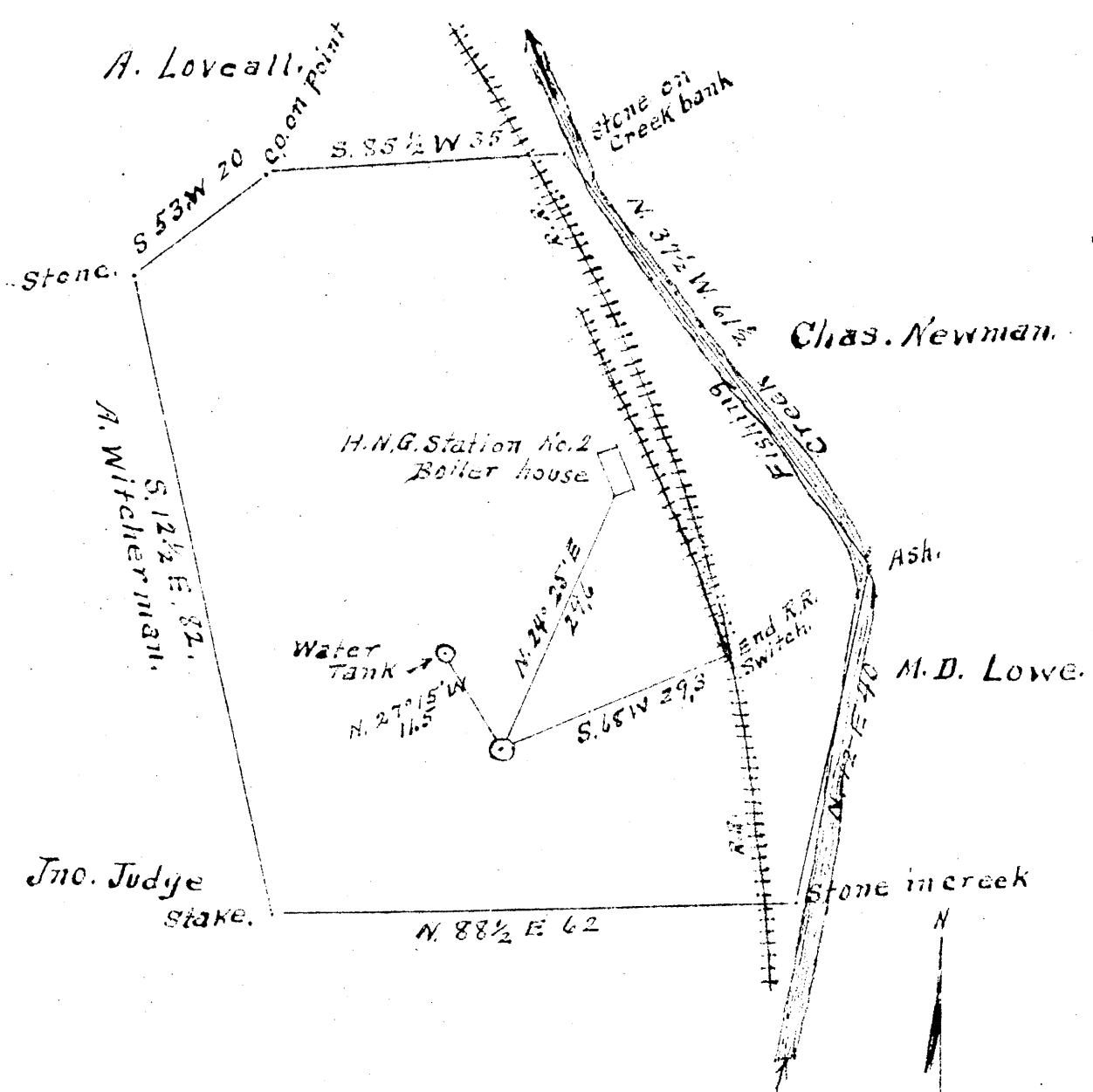


Latitude 39° 35'

Longitude 80° 40'



0.80 W
2.59 S

New Location. _____
 Drill Deeper _____
 Abandonment

Company All Penn Oil & Gas Co.
 Address Grant Bldg. Pittsburgh, Pa.
 Farm L.C. Lievitz
 Tract 1 Acres 39 Lease No. _____
 Well (Farm) No. 1 Serial No. 3250
 Elevation (Spirit Level) 328'
 Quadrangle Littleton 3W
 County Wetzel District Grant
 Engineer A. L. Headley
 Engineer's Registration No. _____
 File No. _____ Drawing No. _____
 Date 1-9-1946 Scale 1 in. = 20 poles

STATE OF WEST VIRGINIA
 DEPARTMENT OF MINES
 OIL AND GAS DIVISION
 CHARLESTON

WELL LOCATION MAP
 FILE NO. WET-535-A

+ Denotes location of well on United States
 Topographic Maps, scale 1 to 62,500, lat-
 itude and longitude lines being represented
 by border lines as shown.
 - Denotes one inch spaces on border line
 of original tracing.

L. C. LIEUTS (Z?) NO. 1 (3250) WELL.

Grant District, Wetzel County, W. Va.

By All Penn Oil & Gas Co., 311 Ross St., Pittsburgh, Pa.

Abandoned under permit Wet-535-A.

On 39 acres; lease No. 13899.

Elevation, 828' L.

Completed Jan. 3, 1914.

6 $\frac{5}{8}$ " casing, 1793' 6"; 5 $\frac{3}{8}$ " , 2042'; 4" liner, 685' 6".

Record filed with Dept. of Mines July 3, 1946.

Record to RCF from Mrs. Griffith September 11, 1946. Old File No. 1000.

	Top.	Bottom.
Pittsburgh Coal	528	- 533
Dunkard Sand	878	- 1030
Salt Sand	1250	- 1570
Maxton Sand	1638	- 1658
Big Injun Sand (gas, 1802') (oil, 1954')	1783	- 2020
(gas, 1824')////		
Gantz Sand	2210	- 2232
Fifty-foot Sand	2378	- 2400
Thirty-foot Sand	2510	- 2525
Stray Sand (gas, 2590')	2584	- 2603
Gordon Sand (gas, 2617')	2613	- 2640
Total depth		2715