

Latitude

.28s
2.12w

Longitude

Topo Location

7.5' Loc. _____ 15' Loc. _____
_____ (calc.) _____

Company Union G+O cap

Farm Nancy & Agnes Callahan

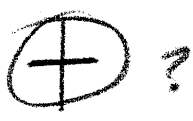
15' Quad _____
(sec.)

7.5' Quad Littleton

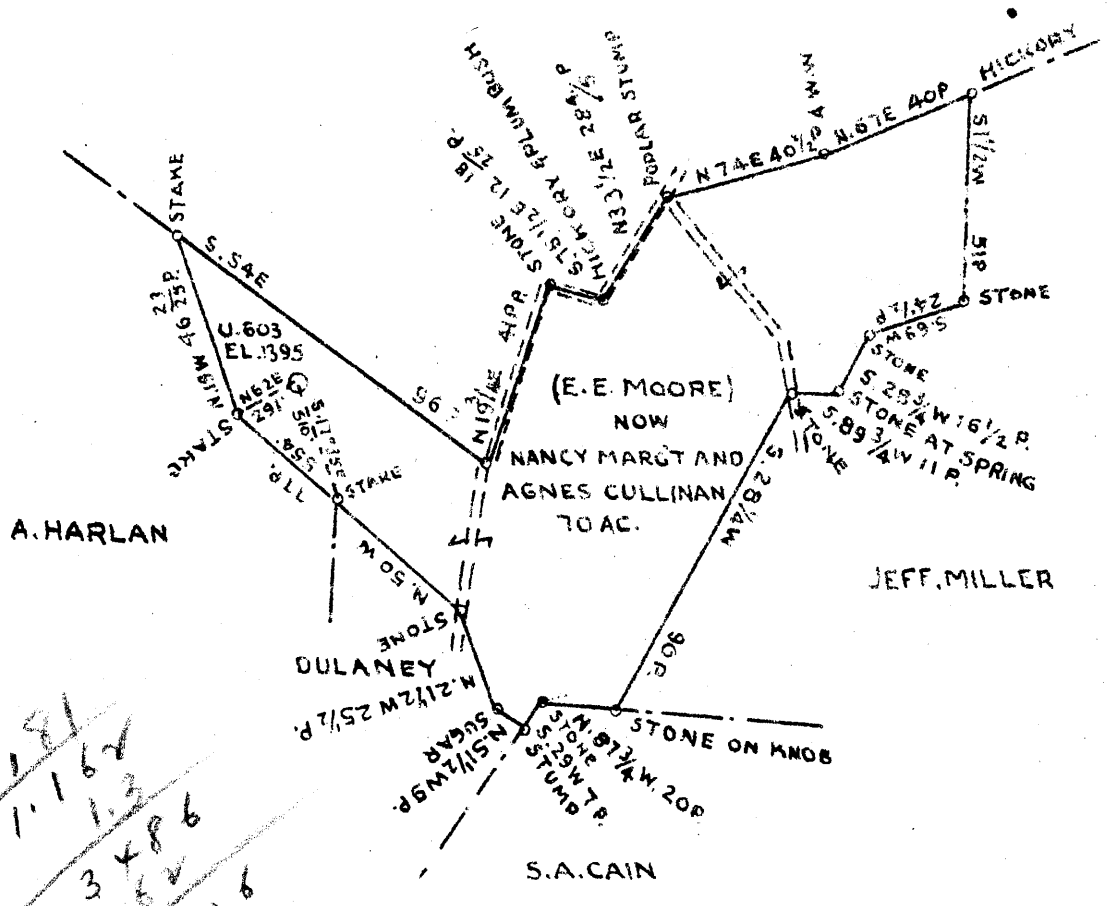
District Center

WELL LOCATION PLAT

County 103 Permit 514A



(E.E. MOORE)
JAS. H. ASHCRAFT
NANCY & AGNES CULLINAN



Handwritten notes and calculations:
7/5.81
1.162
1.3
3.486
1.5106
7/4.5
0.19
4.1
3.69

COAL OWNED BY GEORGE W. CLARK ADM. DEAN WVA.

NEW LOCATION
DRILL DEEPER
ABANDONMENT

NOV 27 1945

3.60 W
1.53 A

COMPANY UNION GASOLINE AND OIL CORPORATION
ADDRESS 1032 WASHINGTON TRUST BLDG. WASHINGTON PA.
FARM E.E. MOORE NOW NANCY M. AND AGNES CULLINAN
TRACT ACRES 70 LEASE NO. 7639
WELL (FARM) NO. 1 SERIAL NO. U-603
ELEVATION (SPIRIT LEVEL) 1395'
QUADRANGLE LITTLETON
COUNTY WETZEL DISTRICT CENTER
ENGINEER J. E. Moore
ENGINEER'S REGISTRATION NO.
FILE NO. DRAWING NO. Y-11-136
DATE NOV. 5, 1945 SCALE 1" = 800'

STATE OF WEST VIRGINIA
DEPARTMENT OF MINES
OIL AND GAS DIVISION
CHARLESTON
WELL LOCATION MAP
FILE NO. WET-514-A

INDICATES LOCATION OF WELL ON UNITED STATES TOPOGRAPHIC MAPS. SCALE 1 TO 62,500. LATITUDE AND LONGITUDE DATA REPRESENTED BY BORDER LINES AS SHOWN.
INDICATES ONE HIGH SPACE ON POLYMER LINE OF ORIGINAL MAP.

(Now Nancy M. & Agnes Cullinan)
E.E. Moore to (U-603) UNION GAS & OIL CORP

WET-514-A

Center District, Wetzel County, W. Va.

M. L. & H. Co. No. 3027.

Completed, Nov. 7, 1925.

Elevation, 1352'±

Oil well.

10" casing, 293'; 8", 1673'; 6-5/8", 2379'.

	Top.	Bottom.
Pittsburgh Coal	1162	1167
Red rock	1200	1220
Red rock (cave, 1350')	1312	1400
Red rock (bad cave, 1530)	1455	1550
Little Dunkard Sand	1550	1585
Big Dunkard Sand	1635	1665
Gas Sand	1795	1825
1 Salt Sand	1910	1943
2 Salt Sand	1960	2008
3 Salt Sand (water, 2085')	2040	2150
Maxton Sand	2292	2321
Little Lime	2333	2340
Pencil Cave	2340	2343
Big Lime	2343	2400
Big Injun Sand (show gas, 2406-14', 2459-67', & 2489-91')	2400	2630
30-Ft. Sand	3145	3160
Gordon Stray Sand (oil, 3222-7')	3204	
Total depth		3238



STATE OF WEST VIRGINIA
DEPARTMENT OF MINES
OIL AND GAS DIVISION

1048

AD 514-A
Permit No. Drilled in 1925

WELL RECORD

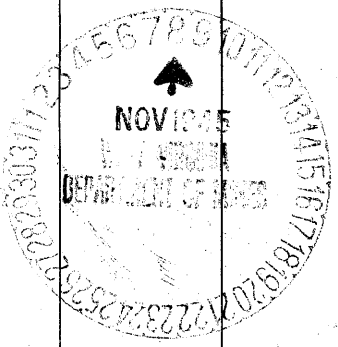
Oil or Gas Well Oil
(KIND)

Company Union Gasoline & Oil Corporation
Address 800 Union Trust Bldg., Pittsburgh, Pa.
Farm E. E. Moore Acres 70
Location (waters) _____
Well No. U-603 (1) Elev. 1395 ft
District Center County Wetzel
The surface of tract is owned in fee by Nancy & Agnes Ollinam
e/o G W Clark Address Dean, W. Va.
Mineral rights are owned by Union Gasoline & Oil Corp.
800 Union Trust Bldg. Address Pittsburgh, Pa.
Drilling commenced July 21 1925
Drilling completed Nov 7 1925
Date Shot July 1936 From ? To ?
With 30 Qts Glycerene
Open Flow /10ths Water in _____ Inch
/10ths Merc. in _____ Inch
Volume _____ Cu. Ft.
Rock Pressure _____ lbs _____ hrs.
Oil 15 Bbl.s _____ bbls., 1st 24 hrs.
Fresh water _____ feet _____ feet
Salt water at 2085 _____ feet _____ feet

Casing and Tubing	Used in Drilling	Left in Well	Packers
Size			
16			Kind of Packer
18			
20	293'		Size of
8 1/4	1673'	1673'	
6	2379' 7"	2379' 7"	Depth set
5 3/16			
3			Perf. top
2		3238'	Perf. bottom
Liners Used			Perf. top
			Perf. bottom

CASING CEMENTED _____ SIZE _____ No. Ft. _____ Date _____
COAL WAS ENCOUNTERED AT 830' FEET 60 INCHES
1064 FEET 48 INCHES 1162 FEET 60 INCHES
_____ FEET _____ INCHES _____ FEET _____ INCHES

Formation	Color	Hard or Soft	Top	Bottom	Oil, Gas or Water	Depth Found	Remarks
Clay				293			
Fairview coal			830	835			
Mapletown "			1064	1068			
Pittsburg "			1162	1167			
Red rock			1200	1220			
Red rock			1312	1400			Cave hole at 1350 Bad cave hole at 1530
Little dunkard			1550	1585			
Gas Sand			1795	1825			
1st Salt sand			1910	1943			
2nd " "			1960	2008			
3rd " "			2040	2150			
Maxon Sand			2292	2321			
Little Lime			2333	2340			
Pencil Cave			2340	2343			
Big Lime			2345	2400			
Big Injun			2400	2630			Show of Gas at 2408 to 2413 " " " " 2459 to 2467 " " " " 2489 " 2491 Oil at 3222 to 3227
30' Sand			3145	3150			
Gordan Stray			3204				Oil at 3222 to 3227
Total Depth			3238				



Formation	Color	Hard or Soft	Top	Bottom	Oil, Gas or Water	Depth Found	Remarks

Date November 7th, 1945

APPROVED UNION GASOLINE & OIL CORPORATION, Owner

By L. H. Elliott
(Title) Supt. of Production