

S. N. Fisher  
37.4<sup>ac</sup>

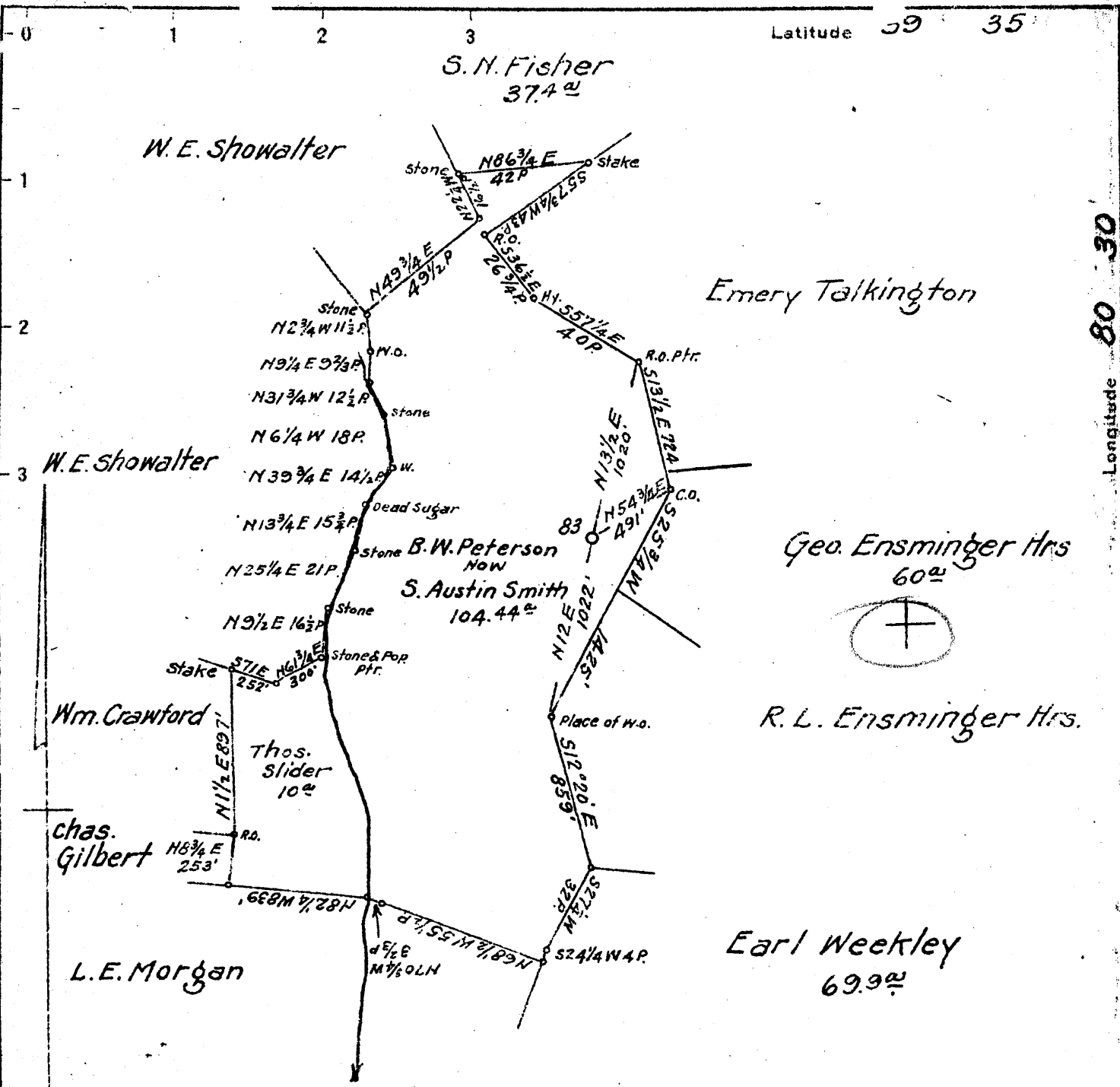
W. E. Showalter

Emery Talkington

Geo. Ensminger Hrs  
60<sup>ac</sup>

R. L. Ensminger Hrs.

Earl Weekley  
69.9<sup>ac</sup>



Coal: Alleghany Real Estate Co.

Fairmont, W. Va.

Surface: S. Austin Smith

Clarksburg, W. Va.

New Location   
Drill Deeper   
Abandonment

SEP 28 1942

N5-6 E5-6 Map N59

Company South Penn Natural Gas Co.  
 Address Parkersburg, W. Va.  
 Farm B. W. Peterson  
 Tract \_\_\_\_\_ Acres 4564 Lease No. 10052  
 Well (Farm) No. 83 Serial No. \_\_\_\_\_  
 Elevation (Spirit Level) 1379.54  
 Quadrangle Littleton  
 County Wetzel District Grant  
 Engineer Emmon Haines  
 Engineer's Registration No. \_\_\_\_\_  
 File No. \_\_\_\_\_ Drawing No. \_\_\_\_\_  
 Date Feb. 27, 1942 Scale 1"=800'

STATE OF WEST VIRGINIA  
DEPARTMENT OF MINES  
OIL AND GAS DIVISION  
CHARLESTON

WELL LOCATION MAP  
FILE NO. WET-427-A

+ Denotes location of well on United States Topographic Maps, scale 1 to 62,500, latitude and longitude lines being represented by border lines as shown.

- Denotes one inch spaces on border line of original tracing.

STATE OF WEST VIRGINIA  
DEPARTMENT OF MINES  
OIL AND GAS DIVISION

*(Handwritten initials)*

WELL RECORD

Permit No. *427-A*

Oil or Gas Well **OIL**  
(KIND)

Company **South Penn Natural Gas Company**  
Address **Union Trust Bldg. Parkersburg, W. Va.**  
Farm **B. W. Peterson** Acres **4564**  
Location (waters) **-----**  
Well No. **83** Elev. **1379.54**  
District **Grant** County **Wetzel**  
The surface of tract is owned in fee by **S. Austin Smith**  
Address **Clarksburg, W. Va.**  
Mineral rights are owned by **Nempco Corporation**  
**805 W. Bldg. Bkg. & Tr. Co. Bldg.** Address **Wheeling, W. Va.**  
Drilling commenced **April 27, 1899**  
Drilling completed **June 5, 1899**  
Date Shot **See Below** From **--** To **--**  
With **-----**

Casing and Tubing	Used in Drilling	Left in Well	Packers
Size			
16			Kind of Packer <b>--</b>
13			<b>--</b>
10	<b>900* (Pulled)</b>		Size of <b>--</b>
8 1/4	<b>1669*</b>		<b>--</b>
6 5/8	<b>2145*</b>		Depth set <b>--</b>
5 3/16	<b>2087</b>		<b>--</b>
3			Perf. top <b>--</b>
2			Perf. bottom <b>--</b>
Liners Used	<b>5-3/16" - 358*</b>		Perf. top <b>--</b>
			Perf. bottom <b>--</b>

Open Flow /10ths Water in **---** Inch  
/10ths Merc. in **---** Inch  
Volume **---** Cu. Ft.  
Rock Pressure **---** lbs. **---** hrs.  
Oil **10** bbls., 1st 24 hrs.  
Fresh water **---** feet **---** feet  
Salt water **---** feet **---** feet

**CASING CEMENTED** **---** SIZE **---** No. Ft. **---** Date **---**  
**COAL WAS ENCOUNTERED AT 1148 FEET 72 INCHES**  
**---** FEET **---** INCHES **---** FEET **---** INCHES  
**---** FEET **---** INCHES **---** FEET **---** INCHES

Formation	Color	Hard or Soft	Top	Bottom	Oil, Gas or Water	Depth Found	Remarks
Pittsburgh Coal			1148	1154			
Little Dunkard			1488	1515			
Big Dunkard			1660	1710			
Salt Sand			2060	2165			
Little Lime			2326	2336			
Pencil Cave			2336	2346			
Big Lime			2350	2426			
Big Injun			2426				
					Oil	2514	
					Oil	2519	
<b>Total Depth</b>				<b>2531</b>			

SHOT RECORD:

Aug. 21 - 1899 - 10 qt.  
Oct. 31 - 1900 - 20 \*  
Jan. 15 - 1904 - 30 \*  
Sept. 21 - 1907 - 40 \*  
Sept. 25 - 1907 - 40 \*



