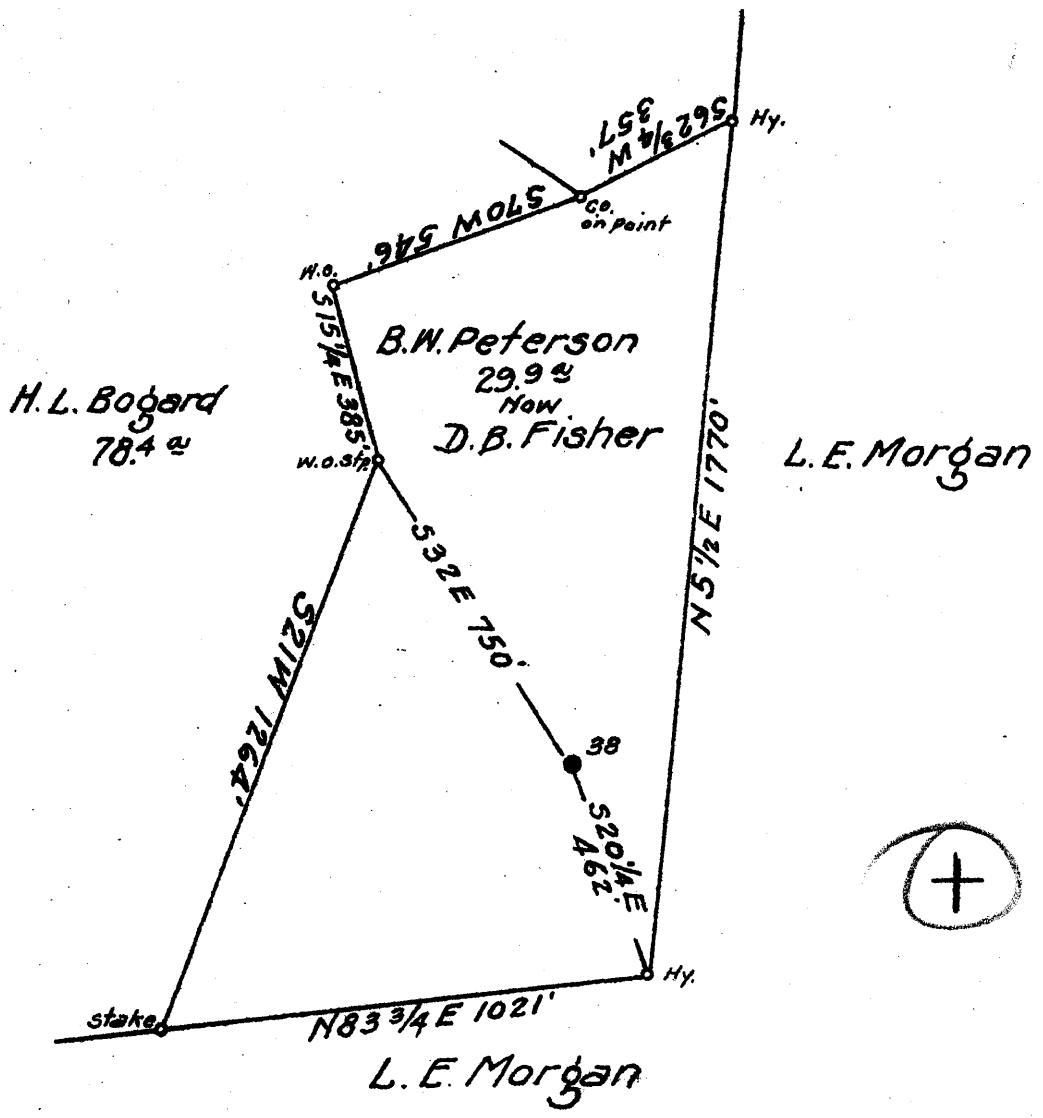


Latitude 39° 35'

Longitude 80° 30'



Coal: *Alleghany Real Estate Co.*  
*Fairmont, W. Va.*

Surface: *D. B. Fisher*  
*Smithfield, W. Va.*

1.94 ~~1.98~~ W

5.02 ~~5.11~~ X

New Location...   
Drill Deeper...   
Abandonment...

SEP 28 1942

N 4 E 5 Map N 59

Company South Penn Natural Gas Co.  
 Address Parkersburg, W. Va.  
 Farm B. W. Peterson  
 Tract \_\_\_\_\_ Acres 4564 Lease No. 10052  
 Well (Farm) No. 38 Serial No. \_\_\_\_\_  
 Elevation (Spirit Level) 1456.95  
 Quadrangle Littleton  
 County Netzel District Grant  
 Engineer Emmon Haines  
 Engineer's Registration No. \_\_\_\_\_  
 File No. \_\_\_\_\_ Drawing No. \_\_\_\_\_  
 Date Feb 26 1942 1" = 400'

STATE OF WEST VIRGINIA  
DEPARTMENT OF MINES  
OIL AND GAS DIVISION  
CHARLESTON

WELL LOCATION MAP  
FILE NO. WET-425-A

+ Denotes location of well on United States Topographic Maps, scale 1 to 62,500. latitude and longitude lines being represented by border lines as shown.

- Denotes one inch spaces on border line of original tracing.

STATE OF WEST VIRGINIA  
DEPARTMENT OF MINES  
OIL AND GAS DIVISION

893

WELL RECORD

Permit No. 425-A

Oil or Gas Well OIL  
(KIND)

Company South Penn Natural Gas Company  
Address Union Trust Bldg. Parkersburg, W. Va.  
Farm B. W. Peterson Acres 4564  
Location (waters) ---  
Well No. 38 Elev. 1456.95  
District Grant County Wetzel  
The surface of tract is owned in fee by D. B. Fisher  
Smithfield, Address W. Va.  
Mineral rights are owned by Nampeco Corporation  
605 Wheeling Bldg. & Trust Co. Bldg. Address Wheeling, W. Va.  
Drilling commenced June 2, 1897  
Drilling completed July 28, 1897  
Date Shot See below From --- To ---  
With ---

Casing and Tubing	Used in Drilling	Left in Well	Packers
Size			
16			Kind of Packer -
13			-
10	<u>925' (Pulled)</u>		Size of -
8 1/4	<u>1665' (Pulled)</u>		-
6 5/8	<u>2257'</u>		Depth set -
5 3/16	<u>348' 8"</u>		-
3			Perf. top -
2			Perf. bottom -
Liners Used	<u>684' 4" X 4"</u>		Perf. top -
			Perf. bottom -

Open Flow /10ths Water in --- Inch  
/10ths Merc. in --- Inch  
Volume --- Cu. Ft.  
Rock Pressure --- lbs. --- hrs.  
Oil 50 bbls., 1st 24 hrs.  
Fresh water --- feet --- feet  
Salt water --- feet --- feet

CASING CEMENTED --- SIZE --- No. Ft. --- Date ---  
COAL WAS ENCOUNTERED AT 1230 FEET 36 INCHES  
--- FEET --- INCHES --- FEET --- INCHES  
--- FEET --- INCHES --- FEET --- INCHES

Formation	Color	Hard or Soft	Top	Bottom	Oil, Gas or Water	Depth Found	Remarks
Pittsburgh	Coal		1230	1233			
Salt Sand			2130	2240			
Little Lime			2415	2430			
Pencil Cave			2430	2445			
Big Lime			2445	2525			
Big Injun			2525				
Total Depth				2636	1st Pay	2622	
<b>DRILLED DEEPER:</b>							
Big Injun			2525	2700			
Stray			3322	3336			
Gordon			3346	3376			
Total Depth				3379			
<b>SHOT RECORD:</b>							
May 11 - 1904			-	10 Qts.			
Apr. 10-1908			-	60 "			
Oct. 22-1908			-	120 "			

