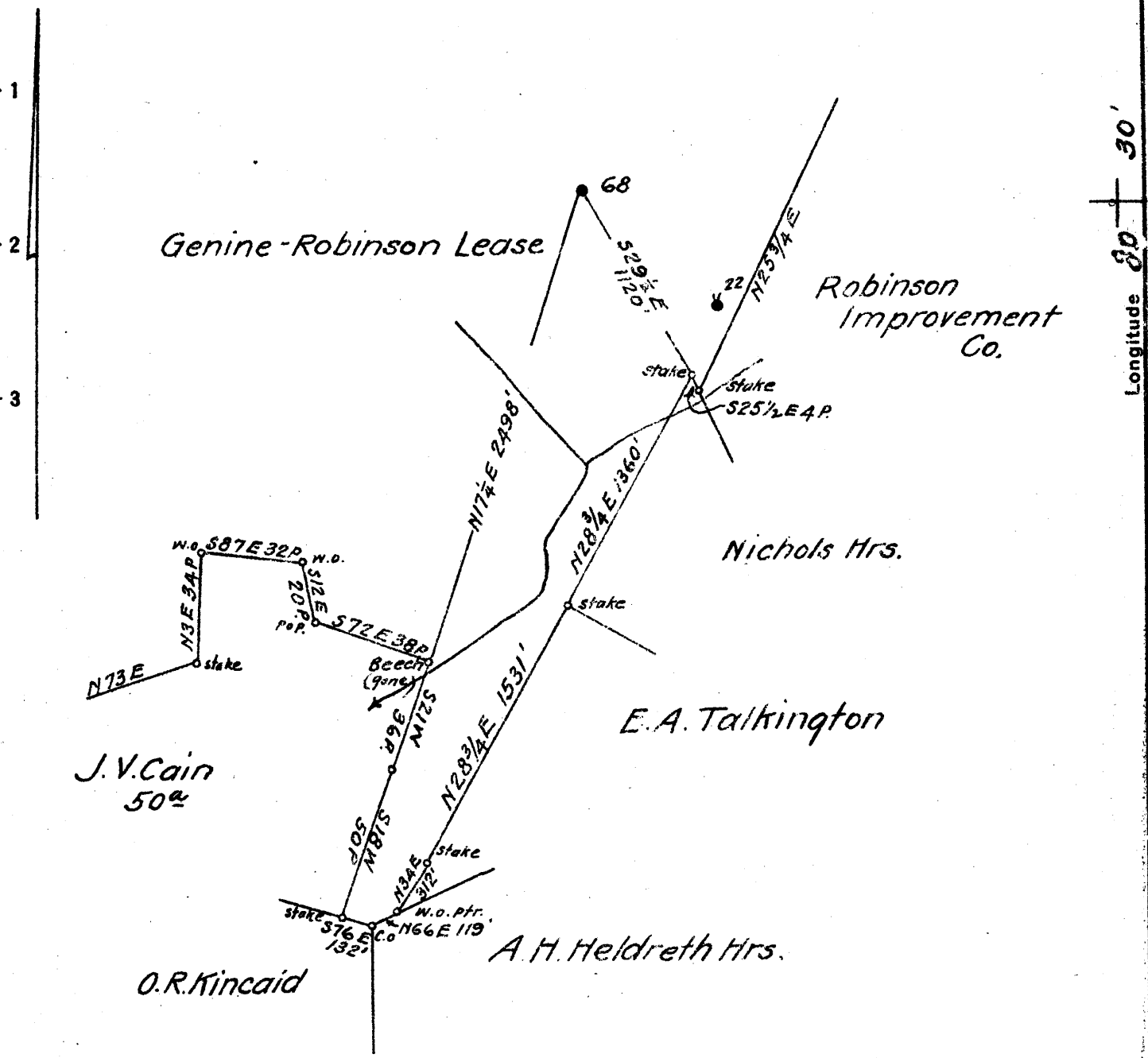


Latitude 39° 30'

Longitude 80° 30'



Coal & Surface
 Robinson Improvement Co.
 The Plains, Va.

0.16 319W
 1.93 Q

New Location
 Drill Deeper
 Abandonment

OCT 26 1941

H1-2 E7

Map H49

Company South Penn Natural Gas Co.
 Address Parkersburg, W.Va.
 Farm Genine-Robinson
 Tract _____ Acres 2600 Lease No. 46809
 Well (Farm) No. 68 Serial No. _____
 Elevation (Spirit Level) 1350.28
 Quadrangle Centerpoint
 County Wetzel District Grant
 Engineer E.C. Tabler
 Engineer's Registration No. _____
 File No. _____ Drawing No. _____
 Date July 17, 1941 Scale 1" = 800'

STATE OF WEST VIRGINIA
 DEPARTMENT OF MINES
 OIL AND GAS DIVISION
 CHARLESTON

WELL LOCATION MAP
 FILE NO. WET-390A

+ Denotes location of well on United States Topographic Maps, scale 1 to 62,500, latitude and longitude lines being represented by border lines as shown.
 - Denotes one inch spaces on border line of original tracing.

STATE OF WEST VIRGINIA
DEPARTMENT OF MINES
OIL AND GAS DIVISION

8074

WELL RECORD

Ad 390-A

Permit No. _____ Oil or Gas Well _____
(Kind)

Company **South Penn Natural Gas Company**
 Address **Union Trust Bldg. Parkersburg, W. Va.**
 Farm **Genine Robinson** Acres **2600**
 Location (waters) -----
 Well No. **68** Elev. **1350.28**
 District **Grant** County **Wetzel**
 The surface of tract is owned in fee by **Robinson Improvement Co., 10"**
The Plains, Virginia.
 Mineral rights are owned by **Robinson Improvement Co**
The Plains, Virginia
 Drilling commenced **September 14, 1916**
 Drilling completed **November 23, 1916**
 Date shot **see below** Depth of shot -----
 Open Flow /10ths Water in ----- Inch
 /10ths Merc. in ----- Inch
 Volume ----- Cu. Ft.
 Rock Pressure ----- lbs. ----- hrs.
 Oil ----- bbls., 1st 24 hrs.
 Fresh water ----- feet ----- feet
 Salt water ----- feet ----- feet

| Casing and Tubing | Used in Drilling | Left in Well | Packers |
|-------------------|------------------|---------------|----------------|
| Size | | | |
| 16. | | | Kind of Packer |
| 13. | | | Size of |
| 8 1/4 | 303 | Pulled | Depth set |
| 6 1/2 | 1736 | Pulled | |
| 5 3/16 | 2494 | | |
| 3. | 3110 | | |
| 2. | | | |
| Liners Used | | | |

CASING CEMENTED ----- SIZE ----- No. Ft. ----- Date -----
 COAL WAS ENCOUNTERED AT ----- FEET ----- INCHES
 ----- FEET ----- INCHES ----- FEET ----- INCHES
 ----- FEET ----- INCHES ----- FEET ----- INCHES

| Formation | Color | Hard or Soft | Top | Bottom | Oil, Gas or Water | Depth Found | Remarks |
|-----------------|-------|---------------|------|--------|-------------------|-------------|---------|
| Pittsburgh Coal | | | 1235 | 1243 | | | |
| Little Dunkard | | | 1595 | 1610 | | | |
| Big Dunkard | | | 1735 | 1749 | | | |
| Gas Sand | | | 1885 | 1915 | | | |
| 1st Salt | | | 2095 | 2140 | | | |
| 2nd Salt | | | 2145 | 2240 | | | |
| Little Lime | | | 2433 | 2440 | | | |
| Pencil Cave | | | 2440 | 2445 | | | |
| Big Lime | | | 2445 | 2497 | | | |
| Big Injun | | | 2497 | 2600 | | | |
| Fifty Foot | | | 3095 | 3115 | Gas | 2510 | |
| Thirty Foot | | | 3205 | 3220 | | | |
| Sand | | | 3255 | 3270 | Oil | 3265 | |
| Stray | | | 3277 | 3309 | Oil | 3299-3302 | |
| Gordon Sand | | | 3320 | 3338 | | | |
| Total Depth | | | | 3344 | | | |
| Shot Record : | | | | | | | |
| | | Nov. 24, 1916 | | 20 qts | | | |
| | | Aug. 27, 1918 | | 30 qts | | | |
| | | Oct. 25, 1920 | | 40 qts | | | |
| | | Feb. 8, 1940 | | 40 qts | | | |

