

Latitude 39° 30'

Longitude 80° 30'

Robinson Imp. Co.

Peter Starkey  
150 ac  
NOW  
C.C. Bates

Robinson Improvement Co.

Clarinda Hayhurst

Ab Ash

Robinson Imp. Co.

Coal: Robinson Improvement Co.  
The Plains, Va.

Surface: C.C. Bates  
Folsom, W. Va.

- New Location
- Drill Deeper
- Abandonment

AUG 25 1941

N3E7

Map. N49

Company South Penn Natural Gas Co.  
 Address Parkersburg, W. Va.  
 Farm Peter Starkey  
 Tract \_\_\_\_\_ Acres 150 Lease No. 46775  
 Well (Farm) No. 6 & 8 Serial No. \_\_\_\_\_  
 Elevation (Spirit Level) 6=1357.35 8=1359.96  
 Quadrangle Centerpoint  
 County Wetzel District Grant  
 Engineer E.C. Tabler  
 Engineer's Registration No. \_\_\_\_\_  
 File No. \_\_\_\_\_ Drawing No. \_\_\_\_\_  
 Date July 18, 1941 Scale 1"=800'

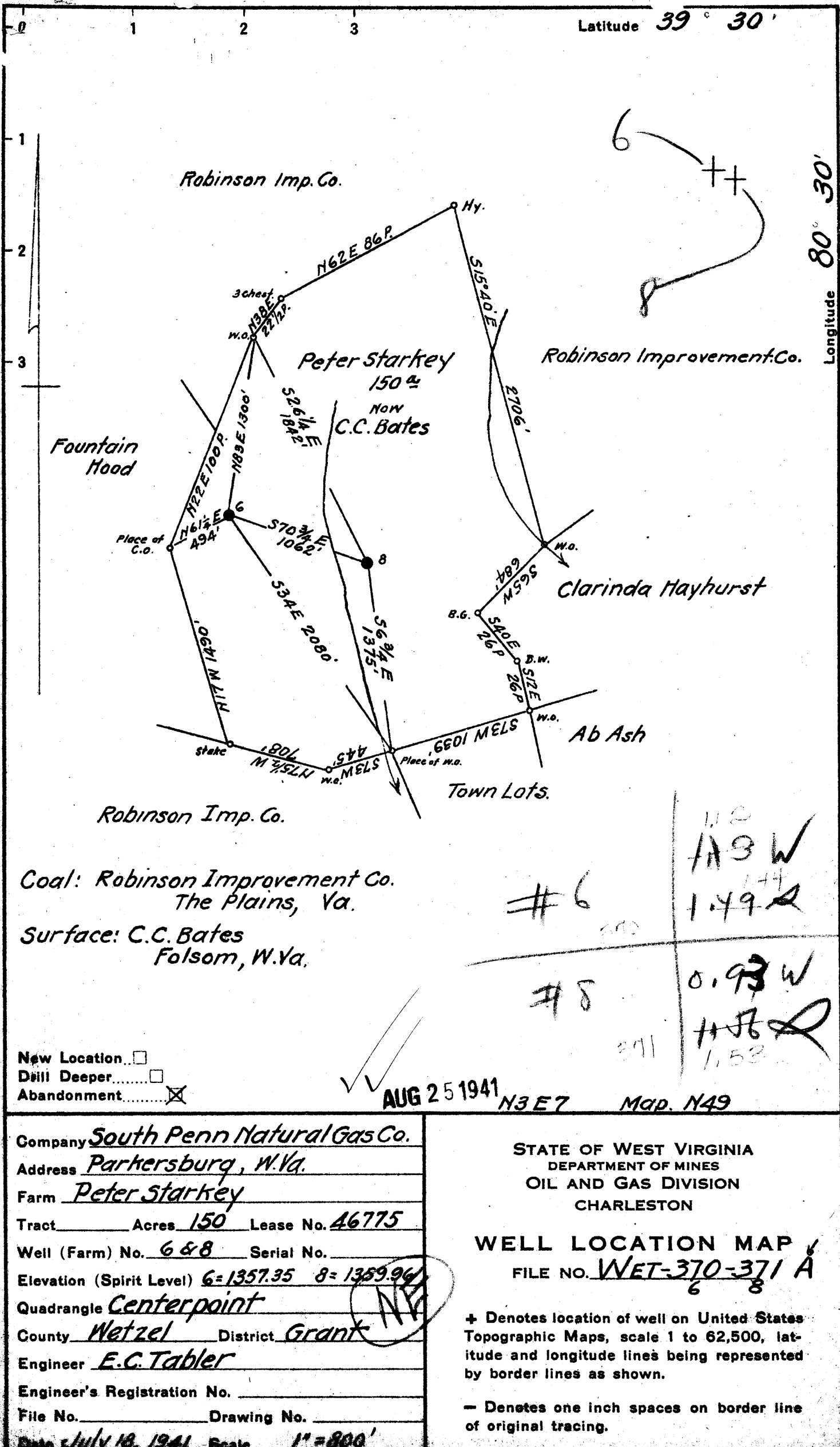
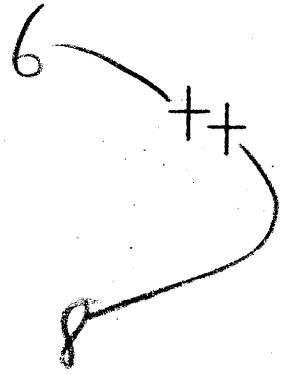
STATE OF WEST VIRGINIA  
DEPARTMENT OF MINES  
OIL AND GAS DIVISION  
CHARLESTON

WELL LOCATION MAP  
FILE NO. WET-370-371 A  
6 8

+ Denotes location of well on United States Topographic Maps, scale 1 to 62,500, latitude and longitude lines being represented by border lines as shown.

- Denotes one inch spaces on border line of original tracing.

#6	1.2	A3W
	1.49	
#8	0.93	W
	1.53	



PETER STARKEY TRACT 6 & 8 - SOUTH PENN NAT GAS CO. WET-370-A

STATE OF WEST VIRGINIA  
DEPARTMENT OF MINES  
OIL AND GAS DIVISION

858

WELL RECORD

Permit No. 77A

Oil or Gas Well OIL  
(KIND)

Company <b>South Penn Natural Gas Company</b>	Casing and Tubing	Used in Drilling	Left in Well	Packers
Address <b>Union Trust Bldg. Parkersburg, W. Va.</b>	Size			
Farm <b>Peter Starkey</b> Acres <b>150</b>	16			Kind of Packer <b>-</b>
Location (waters) <b>6</b>	13			<b>-</b>
Well No. <b>6</b> Elev. <b>1357.35'</b>	10	<b>480(Pulled)</b>		Size of <b>-</b>
District <b>Grant</b> County <b>Wetzel</b>	8 1/4	<b>1619(PULLED 1553)</b>		<b>-</b>
The surface of tract is owned in fee by <b>C. C. Bates</b>	6%	<b>2452</b>		Depth set <b>-</b>
Address <b>Folsom, W. Va.</b>	5 3/16	<b>2595</b>		<b>-</b>
Mineral rights are owned by <b>Lafayette Starkey et al</b>	3			Perf. top <b>-</b>
Address <b>Smithfield, W. Va.</b>	2			Perf. bottom <b>-</b>
Drilling commenced <b>June 28, 1904</b>	Liners Used			Perf. top <b>-</b>
Drilling completed <b>October 2, 1904</b>	<b>Cond.</b>	<b>16'</b>		Perf. bottom <b>-</b>
Date shot <b>Oct 3-1904 - 30 Qt. Gordon</b>				
Date shot <b>May 4-1915 - 30 Qt.</b>				
Open Flow /10ths Water in <b>--</b> Inch	CASING CEMENTED <b>-</b>	SIZE <b>-</b>	No. Ft. <b>-</b>	Date <b>-</b>
/10ths Merc. in <b>--</b> Inch				
Volume <b>--</b> Cu. Ft.				
Rock Pressure <b>--</b> lbs. <b>--</b> hrs.				
Oil <b>15</b> bbls., 1st 24 hrs.	COAL WAS ENCOUNTERED AT <b>1180</b> FEET <b>96</b> INCHES			
Fresh water <b>--</b> feet <b>--</b> feet	<b>-</b> FEET <b>-</b> INCHES <b>-</b> FEET <b>-</b> INCHES			
Salt water <b>2100</b> feet <b>2555</b> feet	<b>-</b> FEET <b>-</b> INCHES <b>-</b> FEET <b>-</b> INCHES			

Formation	Color	Hard or Soft	Top	Bottom	Oil, Gas or Water	Depth Found	Remarks
Pittsburgh Coal			1180	1188			
Little Dunkard Sand			1540	1620			
Big Dunkard Sand			1680	1715	Gas	1595	
Gas Sand			1975	2057			
Salt Sand			2063	2193			
Little Lime			2350	2394	Water	2100	
Pencil Cave			2397	2399			
Big Lime			2399	2480			
Big Injun Sand			2480	2590			
					Water	2540	
					Water	2555	
Upper 30 Ft Sand			2910	2930			
Fifty Foot Sand			3050	3075			
Lower 30 Ft Sand			3160	3185			
Stray Sand			3205	3268			
Gordon Sand			3278	3294	Gas	3245	
					Oil	3282	
Total Depth,				3298			

