

**Latitude**

**Longitude**

2.135  
1.18w

**Topo Location**

7.5' Loc. \_\_\_\_\_ 15' Loc. \_\_\_\_\_  
(calc.) \_\_\_\_\_

Company Hope

Farm AR McHenry #5625 (HCR-492)

15' Quad \_\_\_\_\_  
(sec.)

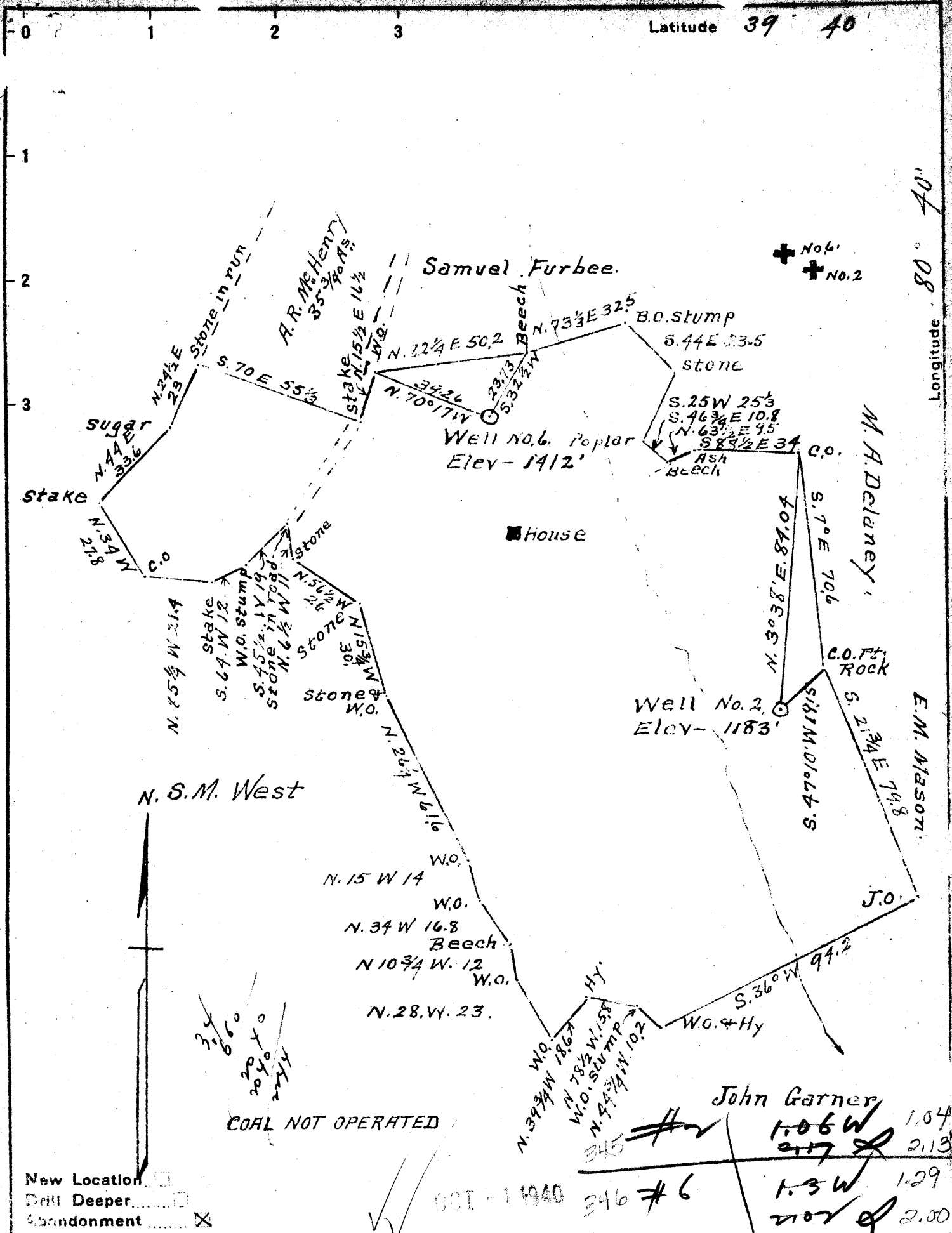
7.5' Quad Wileyville

District Proctor

**WELL LOCATION PLAT**

County 103 Permit 30455

345A



New Location   
 Drill Deeper   
 Abandonment

Company H. E. Milliken et al.  
 Address Waynesburg, Pa.  
 Farm A. R. McHenry  
 Tract ONE Acres 199 1/5 Lease No. 1876  
 Well (Farm) No. 6 Serial No. 492  
 Elevation (Spirit Level) No. 6 = 1412'  
 Quadrangle Littleton  
 County Netzel District Proctor  
 Engineer A. L. Headley  
 Engineer's Registration No. \_\_\_\_\_  
 File No. \_\_\_\_\_ Drawing No. \_\_\_\_\_  
 Date July 18, 1940 Scale 1 in = 40 poles

STATE OF WEST VIRGINIA  
 DEPARTMENT OF MINES  
 OIL AND GAS DIVISION  
 CHARLESTON

WELL LOCATION MAP  
 FILE NO. WET-345-346  
 WELL No. 2

+ Denotes location of well on United States Topographic Maps, scale 1 to 62,500, latitude and longitude lines being represented by border lines as shown.

-- Denotes one inch spaces on border line of original tracing.

A. R. McHENRY NO. 5625 WELL.

Not located.

70155 →

30345

Proctor District, Wetzel County, W. Va.

Hope No. 5625.

Completed, Dec. 31, 1919.

Gordon oil well.

	Top.	Bottom.
Pittsburgh Coal	1108	- 1112
Dunkard Sand	1480	- 1650
Salt Sand	1908	- 2112
Maxton Sand	2125	- 2170
Big Injun Sand	2301	- 2490
Berea Sand	2670	- 2755
30-Ft. Sand	3010	- 3020
Stray Sand (oil at 3133')	3131	- 3139
Gordon (oil at 3150'; gas at 3148')	3147	- 3153
Total depth		3166

STATE OF WEST VIRGINIA  
DEPARTMENT OF MINES  
OIL AND GAS DIVISION

811

WELL RECORD

Oil

Permit No. 3X-A

Oil or Gas Well (KIND)

Company **H. E. Milliken et al.**  
 Address **Waynesburg, Pa.**  
 Farm **A. R. McHenry** Acres **199-1/5**  
 Location (waters) \_\_\_\_\_  
 Well No. **2. (H C & R Co. No. 492)** Elev. **1183**  
 District **Proctor** County **Wetzel**  
 The surface of tract is owned in fee by \_\_\_\_\_  
 Address \_\_\_\_\_  
 Mineral rights are owned by \_\_\_\_\_  
 Address \_\_\_\_\_  
 Drilling commenced **9-24-1919**  
 Drilling completed **12-31-1919**  
 Date shot **3-5-1930** Depth of shot **Gordon**  
 Open Flow /10ths Water in \_\_\_\_\_ Inch  
 /10ths Merc. in \_\_\_\_\_ Inch  
 Volume \_\_\_\_\_ Cu. Ft.  
 Rock Pressure \_\_\_\_\_ lbs. \_\_\_\_\_ hrs.  
 Oil \_\_\_\_\_ bbls., 1st 24 hrs.  
 Fresh water **None recorded** feet \_\_\_\_\_ feet  
 Salt water **None recorded** feet \_\_\_\_\_ feet

Casing and Tubing	Used in Drilling	Left in Well	Packers
Size			Kind of Packer
16			
13			
10	<b>480</b>	<b>Pulled</b>	Size of
8 1/4	<b>1605</b>	<b>Pulled</b>	
6 5/8	<b>2284</b>	<b>2284</b>	Depth set
5 3/16	<b>2837</b>	<b>2837</b>	
3			Perf. top
2	<b>3153</b>	<b>3153</b>	Perf. bottom
Liners Used			Perf. top
			Perf. bottom

CASING CEMENTED \_\_\_\_\_ SIZE \_\_\_\_\_ No. Ft. \_\_\_\_\_ Date \_\_\_\_\_  
**Not cemented**  
 COAL WAS ENCOUNTERED AT **1108** FEET **48** INCHES  
 \_\_\_\_\_ FEET \_\_\_\_\_ INCHES \_\_\_\_\_ FEET \_\_\_\_\_ INCHES  
 \_\_\_\_\_ FEET \_\_\_\_\_ INCHES \_\_\_\_\_ FEET \_\_\_\_\_ INCHES

Formation	Color	Hard or Soft	Top	Bottom	Oil, Gas or Water	Depth Found	Remarks
Pittsburgh Coal			1108	1112			
Little Dunkard Sand			1480	1492			
Big Dunkard Sand			1590	1650			
Gas Sand			1791	1814			
First Salt Sand			1908	1945			
Second Salt Sand			2078	2112			
Maxon Sand			2125	2170			
Little Lime			2170	2185			
Big Lime			2220	2301			
Big Injun Sand			2301	2490			
Squaw Sand			2492	2540			
Berea Sand			2670	2755			
Thirty Foot Sand			3010	3020			
Gordon Stray Sand			3131	3139			
Gordon Sand			3147	3153	<b>Oil</b> <b>Gas</b>	<b>3150-</b> <b>3148</b>	
<b>Total Depth</b>				<b>3166</b>			



Formation	Color	Hard or Soft	Top	Bottom	Oil, Gas or Water	Depth Found	Remarks

Date September 16, 1940., 194.....

APPROVED H. E. Milliken, Owner

By G. M. Snider  
(Title)