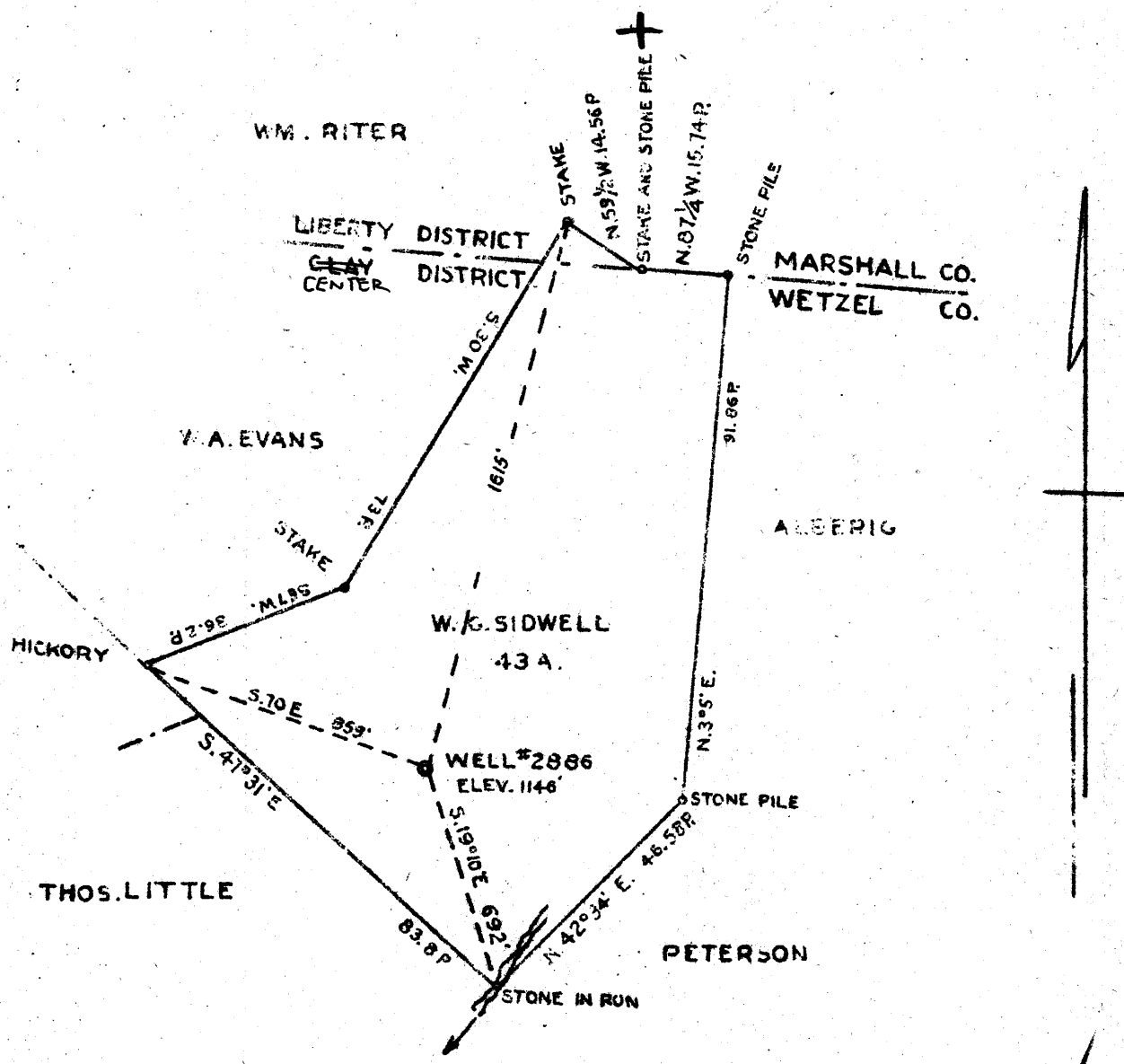


1
2
3

Longitude 80 15 50



BELTON FUEL COMPANY OWNS COAL

New Location...
 Drill Deeper...
 Abandonment...

✓ DEC 27 1939

3.46 3.5 W
 2.24 2.28 Q

Company **THE MANUFACTURERS LIGHT & HEAT CO.**
 Address **800 UNION TRUST BLDG PITTSBURGH PA**
 Farm **W. G. SIDWELL ET AL.**
 Tract Acres **43** Lease No. **8472**
 Well (Farm) No. **2** Serial No. **2886**
 Elevation (Spirit Level) **1146'**
 Quadrangle **LITTLETON N.E.**
 County **WETZEL** District **CLAY Center**
 Engineer *J. H. Mercer*
 Engineer's Registration No. _____
 File No. _____ Drawing No. **Y-8-562**
 NOVEMBER 28 1939 Scale 1" = 500'

STATE OF WEST VIRGINIA
 DEPARTMENT OF MINES
 OIL AND GAS DIVISION
 CHARLESTON
WELL LOCATION MAP
 File No. **WET-315A**

- Denotes location of well on United States Topographic Maps, scale 1 to 62,500, latitude and longitude lines being represented by border lines as shown.
 - Denotes one inch spaces on border line of original tracing

STATE OF WEST VIRGINIA
DEPARTMENT OF MINES
OIL AND GAS DIVISION

791

Wet-3.15A

WELL RECORD

Permit No. Drilled in 1923

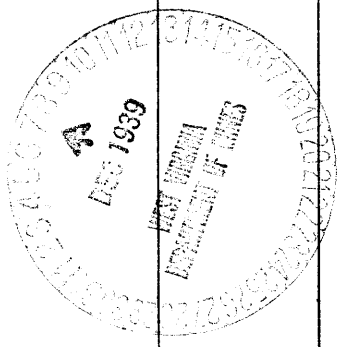
Oil or Gas Well Gas
(Kind)

Company The Mfrs. Light & Heat Company
Address 800 Union Trust Bldg., Pittsburgh, Pa.
Farm W. G. Sidwall Acres 60
Location (waters) _____
Well No. 2 - 2886 Elev. 1116'
District Clay County Wetzel
The surface of tract is owned in fee by F. L. Burley
Ballton Address Woodruff, WVa.
Mineral rights are owned by The Mfrs. Light & Heat Co
800 Union Trust Bldg. Address Pittsburgh, Pa.
Drilling commenced Oct. 1, 1923
Drilling completed Dec 17, 1923
Date shot _____ Depth of shot _____
Open Flow 9/10ths Water in 8 1/4 Inch
/10ths Merc. in _____ Inch

Casing and Tubing	Used in Drilling	Left in Well	Packers
Size			
16			Kind of Packer
13			
10	253' 10"	253' 10"	Size of
8 1/4	1613' 2"	1613' 2"	
6 5/8			Depth set
5 3/16			
x 4"	2010' 2"	2010' 2"	Perf. top
2			Perf. bottom
Liners Used			Perf. top
			Perf. bottom

Volume _____ Cu. Ft. CASING CEMENTED _____ SIZE _____ No. FT. _____ Date _____
Rock Pressure _____ lbs. _____ hrs.
Oil _____ bbls., 1st 24 hrs. COAL WAS ENCOUNTERED AT 775 FEET 60 INCHES
Fresh water _____ feet _____ feet 970 FEET 72 INCHES 1084 FEET 60 INCHES
Salt water _____ feet _____ feet _____ FEET _____ INCHES _____ FEET _____ INCHES

Formation	Color	Hard or Soft	Top	Bottom	Oil Gas or Water	Depth Found	Remarks
Clay			0	60			
Red Rock			60	90			
Red Rock			270	315			
Bluff Sand			710	775			
Fairview Coal			775	780			
Mapletown Coal			970	976			
Pittsburgh Coal			1084	1089			
Little Dunkard			1554	1574			
Big Dunkard			1614	1634			
Slate			1634	1730			
Lime			1730	1765			
2nd Salt Sand			1920	1990			
Total depth				1990	Little gas at 1972 Gas 1977 to 1983		



Formation	Color	Hard or Soft	Top	Bottom	Oil, Gas or Water	Depth Found	Remarks

Date December 6th, 1939

APPROVED THE MANUFACTURERS LIGHT & HEAT CO, Owner

By Harry H. Fowler
 Land Dept. (Title) Office Manager