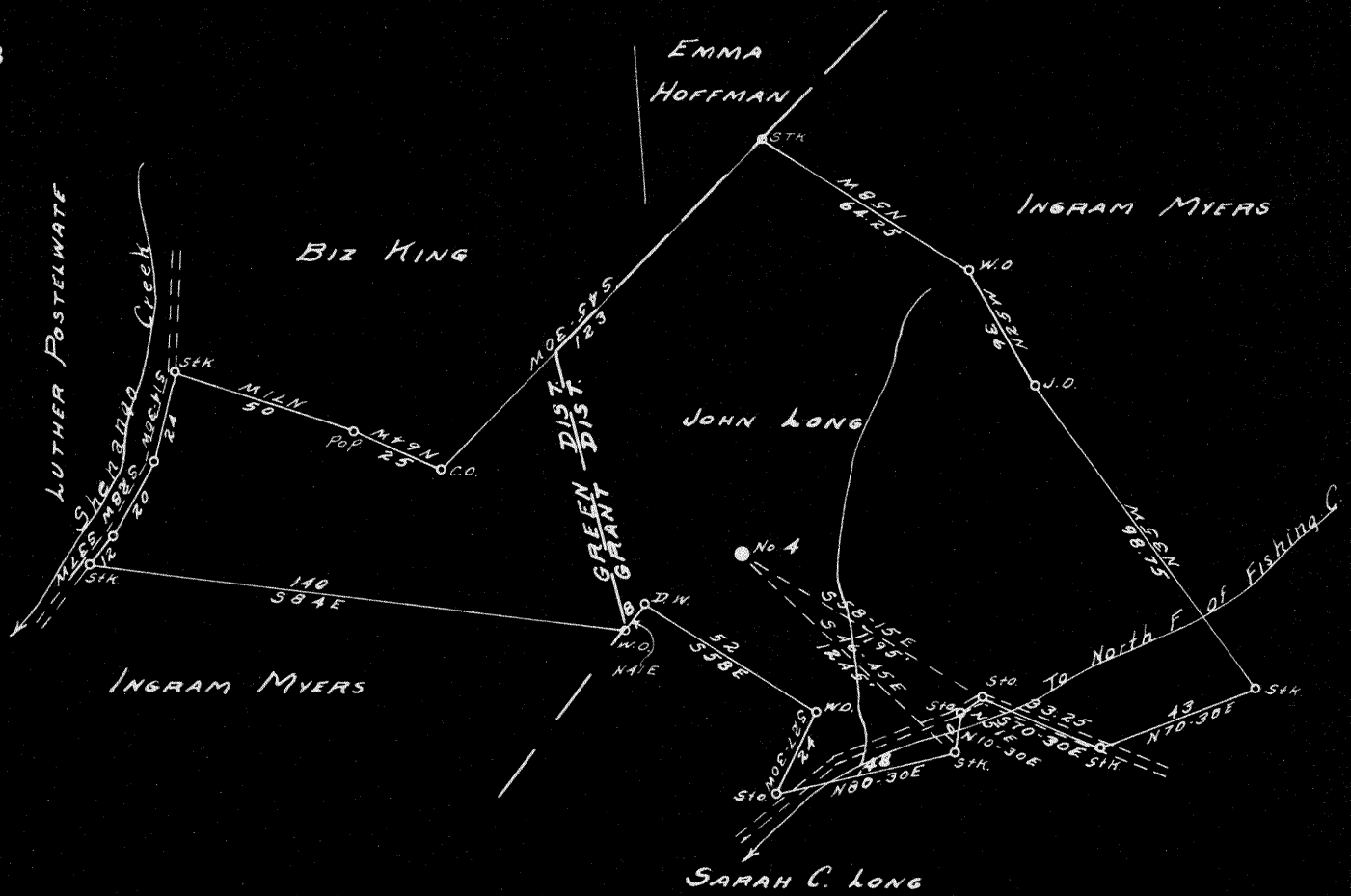


Latitude 39° 35'

Longitude 80° 40'



0.28 S
0.50 W

New Location
 Drill Deeper
 Abandonment

Company BRITTON & BERGE

Address VIENNA, WVA.

Farm JOHN LONG

Tract _____ Acres 138 Lease No. 31943

Well (Farm) No. _____ Serial No. 1

Elevation (Spirit Level) 1100

Quadrangle LITTLETON S.W.

County WETZEL District GRANT

Engineer Alvin H. King G.E.M.E.

Engineer's Registration No. 2011

File No. _____ Drawing No. _____

Date 9-27-48 Scale 1" = 800'

STATE OF WEST VIRGINIA
 DEPARTMENT OF MINES
 OIL AND GAS DIVISION
 CHARLESTON

WELL LOCATION MAP

FILE NO. Wet-726-A

+ Denotes location of well on United States Topographic Maps, scale 1 to 62,500, latitude and longitude lines being represented by border lines as shown.

- Denotes one inch spaces on border line of original tracing.



STATE OF WEST VIRGINIA
DEPARTMENT OF MINES
OIL AND GAS DIVISION

1198

WELL RECORD

Ab 716 A

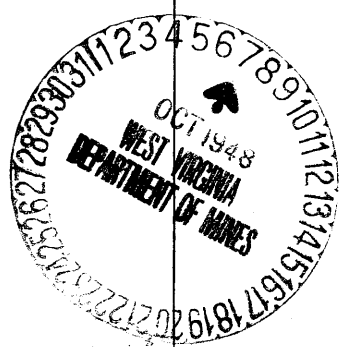
Permit No. _____ Oil or Gas Well Oil
(KIND)

Company Britton & Berge
Address Vienna, W.Va.
Farm John Long Acres 138
Location (waters) North Fork of Fishing Creek
Well No. 4 Elev. 1100'
District Grant County Wetzel
The surface of tract is owned in fee by John Long
Address Reader, W.Va.
Mineral rights are owned by John Long
Address Reader, W.Va.
Drilling commenced No record
Drilling completed No record
Date Shot 8/17/17 From 2846 To _____
With 80 qts.
Open Flow _____ /10ths Water in _____ Inch
_____ /10ths Merc. in _____ Inch
Volume _____ Cu. Ft.
Rock Pressure _____ lbs. _____ hrs.
Oil No record bbls., 1st 24 hrs.
Fresh water _____ feet _____ feet
Salt water _____ feet _____ feet

Casing and Tubing	Used in Drilling	Left in Well	Packers
Size			
16			Kind of Packer
13			
10	505	505	Size of
8 1/4	1305		
6 5/8	2002		Depth set
5 3/16			
3			Perf. top
2			Perf. bottom
Liners Used			Perf. top
			Perf. bottom

CASING CEMENTED _____ SIZE _____ No. Ft. _____ Date _____
COAL WAS ENCOUNTERED AT 790 FEET _____ INCHES
_____ FEET _____ INCHES FEET _____ INCHES
_____ FEET _____ INCHES FEET _____ INCHES

Formation	Color	Hard or Soft	Top	Bottom	Oil, Gas or Water	Depth Found	Remarks
Pgh. Coal			790	797			
Pencil Cave			1940	1950			
Big Lime			1950	2010			
Big Injun			2010	2265			
Fifty foot			2580	2625			
Stray sand			2820				
Gordon			2850		Oil 2852		
Total Depth				2869			



MAR 17 1949

WEST VIRGINIA DEPARTMENT OF MINES
OIL AND GAS DIVISION

726

WELL RECORD

Permit No. AP-283-A

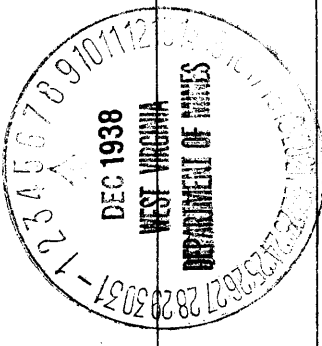
Oil or Gas Well OIL
(Kind)

Company South Penn Oil Company
Address 411 Seventh Ave., Pittsburgh, Pa.
Farm John Long Acres 144
Location (waters) - - - -
Well No. 4 Elev. 1024.86'
District Grant County Wetzel
The surface of tract is owned in fee by John Long
Address Reader, W. Va.
Mineral rights are owned by John Long
Address Reader, W. Va.
Drilling commenced July 22, 1901
Drilling completed September 19, 1901
Date shot Aug. 18, 1904-30 qt.
Sep. 18, 1904-30 qt. Depth of shot ---
Aug. 17, 1917-80 qt.
Open Flow 10ths water in Inch
10ths Merc. in Inch
Volume -- Cu. Ft.
Rock Pressure -- lbs. -- hrs.
Oil No record bbls., 1st 24 hrs.
Fresh water -- feet -- feet
Salt water -- feet -- feet

Casing and Tubing	Used in Drilling	Left in Well	Packers
Size			Kind of Packer <u>-</u>
16			
13			
10	<u>505 (Pulled)</u>		Size of <u>-</u>
8 1/4	<u>1305'</u>		
6 5/8	<u>2002'</u>		Depth set <u>-</u>
5 3/16	<u>2857'</u>		
3			Perf. top <u>-</u>
2			Perf. bottom <u>-</u>
Liners Used	<u>213'</u>		Perf. top <u>-</u>
			Perf. bottom <u>-</u>

CASING CEMENTED - SIZE - No. FT. - Date -
COAL WAS ENCOUNTERED AT 790 FEET 84 INCHES
- FEET - INCHES - FEET - INCHES
- FEET - INCHES - FEET - INCHES

Formation	Color	Hard or Soft	Top	Bottom	Oil Gas or Water	Depth Found	Remarks
Pittsburgh Coal			790	797			
Dunkard Sand			1290	1350			
Salt Sand			1600	1680			
Little Lime			1930	1940			
Pencil Cave			1940	1950			
Big Lime			1950	2010			
Big Injun			2010	2265			
Fifty Foot Sand			2580	2625			
R. Rock			2685	2740			
Gordon Stray Sand			2820 Top				
Gordon Sand			2850 Top				
					1st Oil	2852	
Total Depth				2869			



Formation	Color	Hard or Soft	Top	Bottom	Oil, Gas or Water	Depth Found	Remarks

Date **December 2,** 19**38**

APPROVED **SOUTH PENN OIL COMPANY,** Owner

By *Elton Young* Land Agent
(Title)