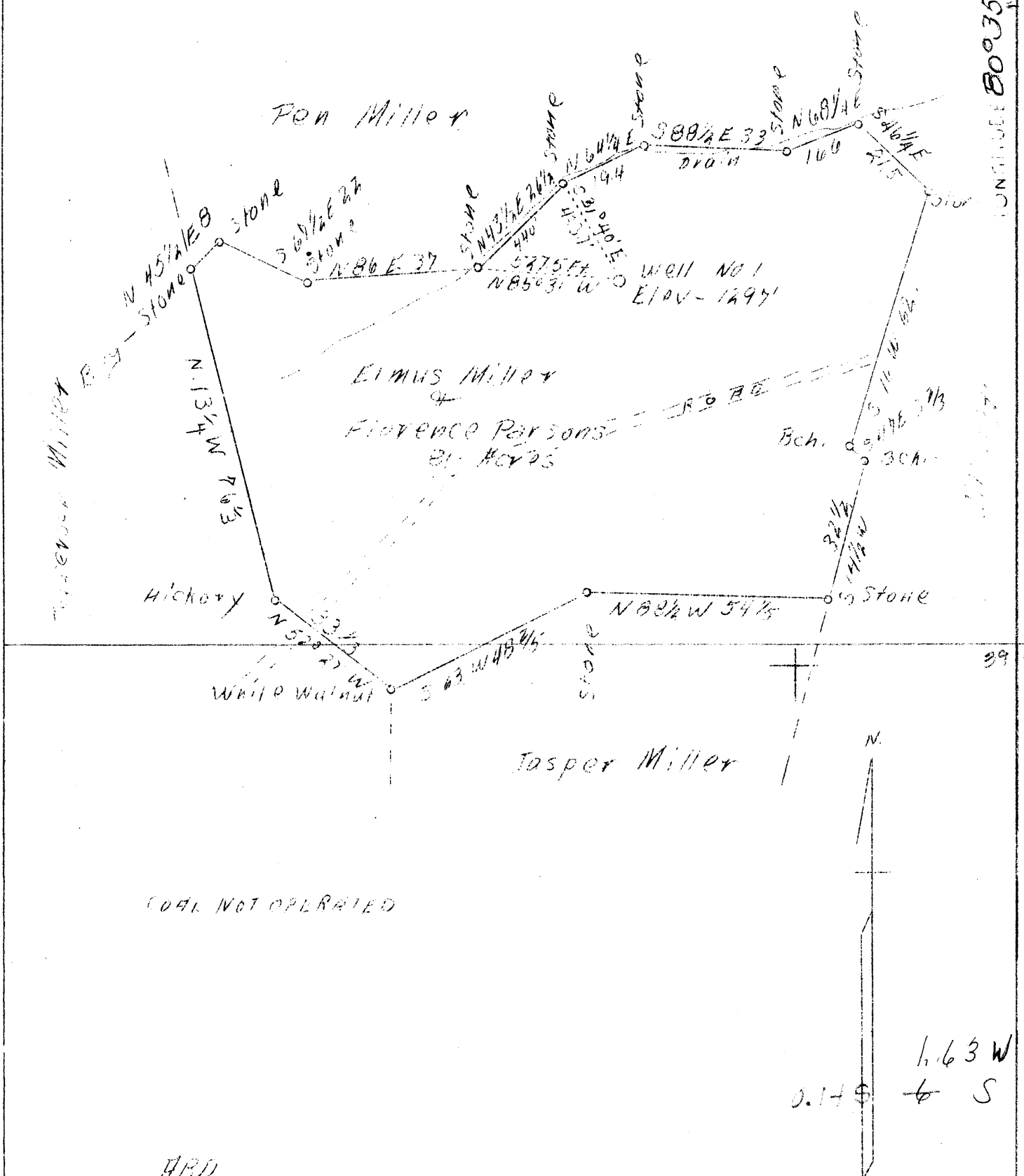


LATITUDE 39° 45'

LONGITUDE 80° 35'



COAL NOT OPERATED

A.B.D.

Company	L. A. Dillenger	STATE OF WEST VIRGINIA
Address	Waynesburg, Pa.	Department of Mines
Farm	Elmus Miller & Florence Parsons	OIL & GAS DIVISION
Tract	One	Charleston
Acres	81	
Well (Farm) No.	One	WELL LOCATION MAP
Serial No.	992	File No. <u>1124-282-A</u>
Elevation (SP)	1297'	
Quadrangle	Littleton	
County	Wetzel	
District	Center	
Engineer	A. L. Headley	
Eng. Reg. No.	-	
Date	Oct. 8, 1938	
Scale	1" - 495'	

x Denotes location of well on U. S. Topographic Maps, scale 1 to 62,500, latitude and longitude lines being represented by border lines as shown.
 - Denotes one inch spaces on border line of original tracing.

