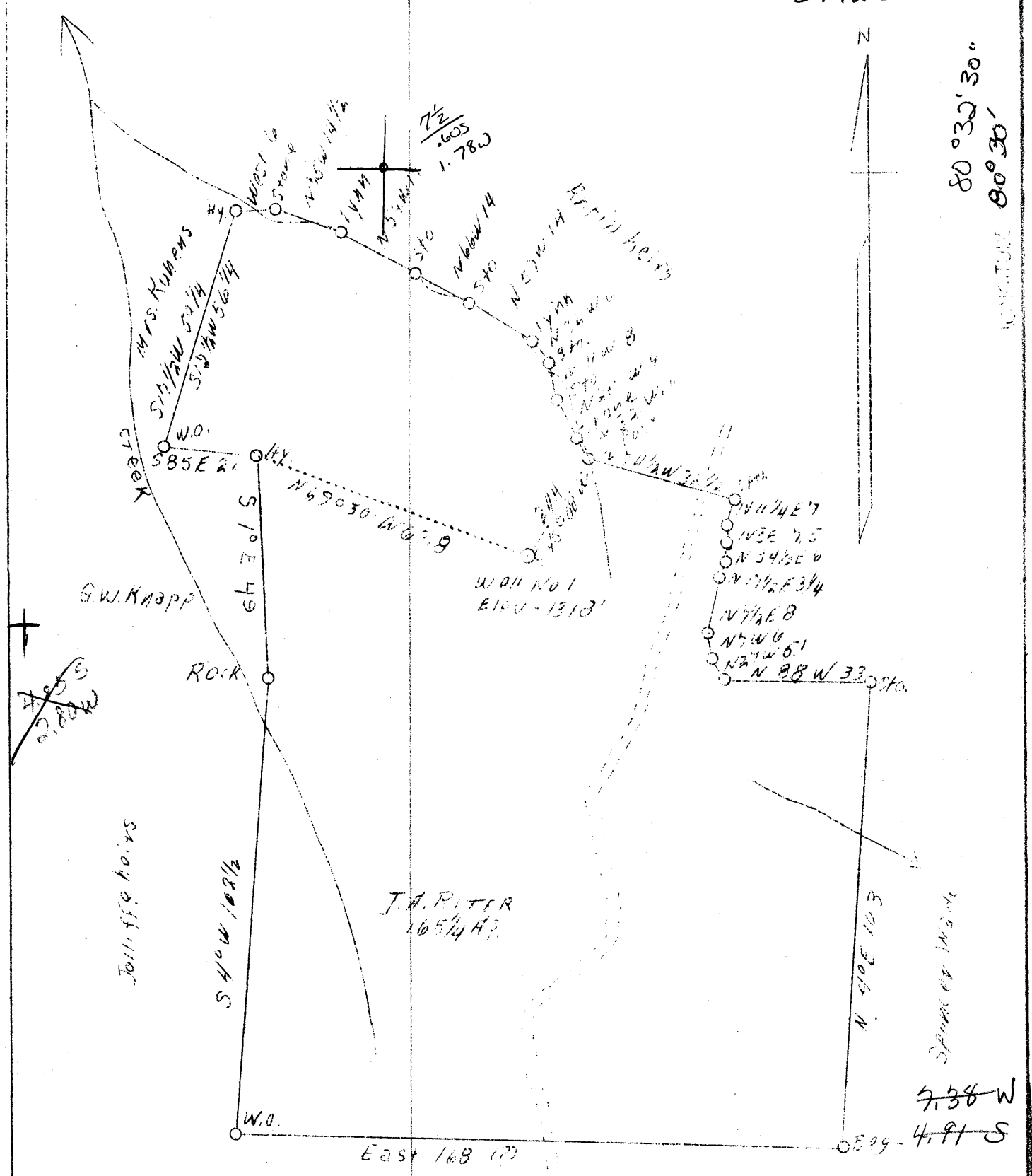


80°35'

LATITUDE 34°45'
39°42'30"

80°32'30"

LONGITUDE 80°30'



COAL NOT OPERATED

ABD

Tolliffe heirs

Calc 15' Loc

7.5' Loc

3.475 3945

0.605 394230

4.00 W 8030

1.78 W 803230

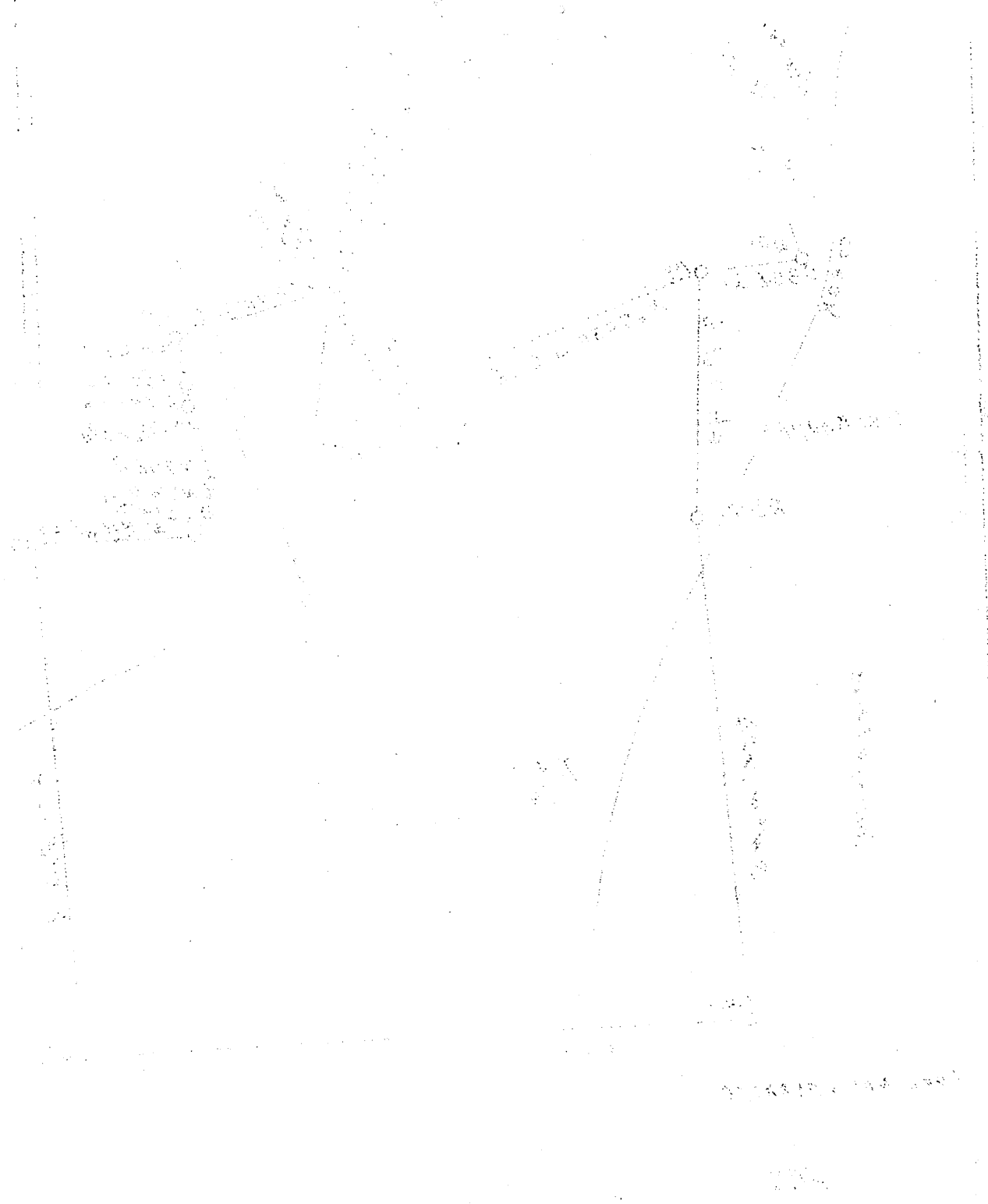
Company G. L. Phillips
 Address Blacksville, W. Va.
 Farm J. A. Riter
 Tract One
 Acres 165-1/4
 Well (Farm) No. One
 Serial No. (1038)
 Elevation 1318'
 Quadrangle Littleton NE
 County Wetzel
 District Clay Center
 Engineer A. L. Headley
 Eng. Reg. No. -
 Date 9-1-38
 Scale 1" - 500'

STATE OF WEST VIRGINIA
 Department of Mines
 OIL & GAS DIVISION
 Charleston

WELL LOCATION MAP
 File No. Wet-281-A

x Denotes location of well on U. S. Topographic Maps, scale 1 to 62,500, latitude and longitude lines being represented by border lines as shown.

- Denotes one inch spaces on border line of original tracing.



Technical drawing details and notes:

Scale: 1:1

Material: Steel

Notes:

- 1. All dimensions are in millimeters.
- 2. Surface finish: Ra 0.8.
- 3. Heat treatment: Normalized.
- 4. Tolerances: H7/g6.