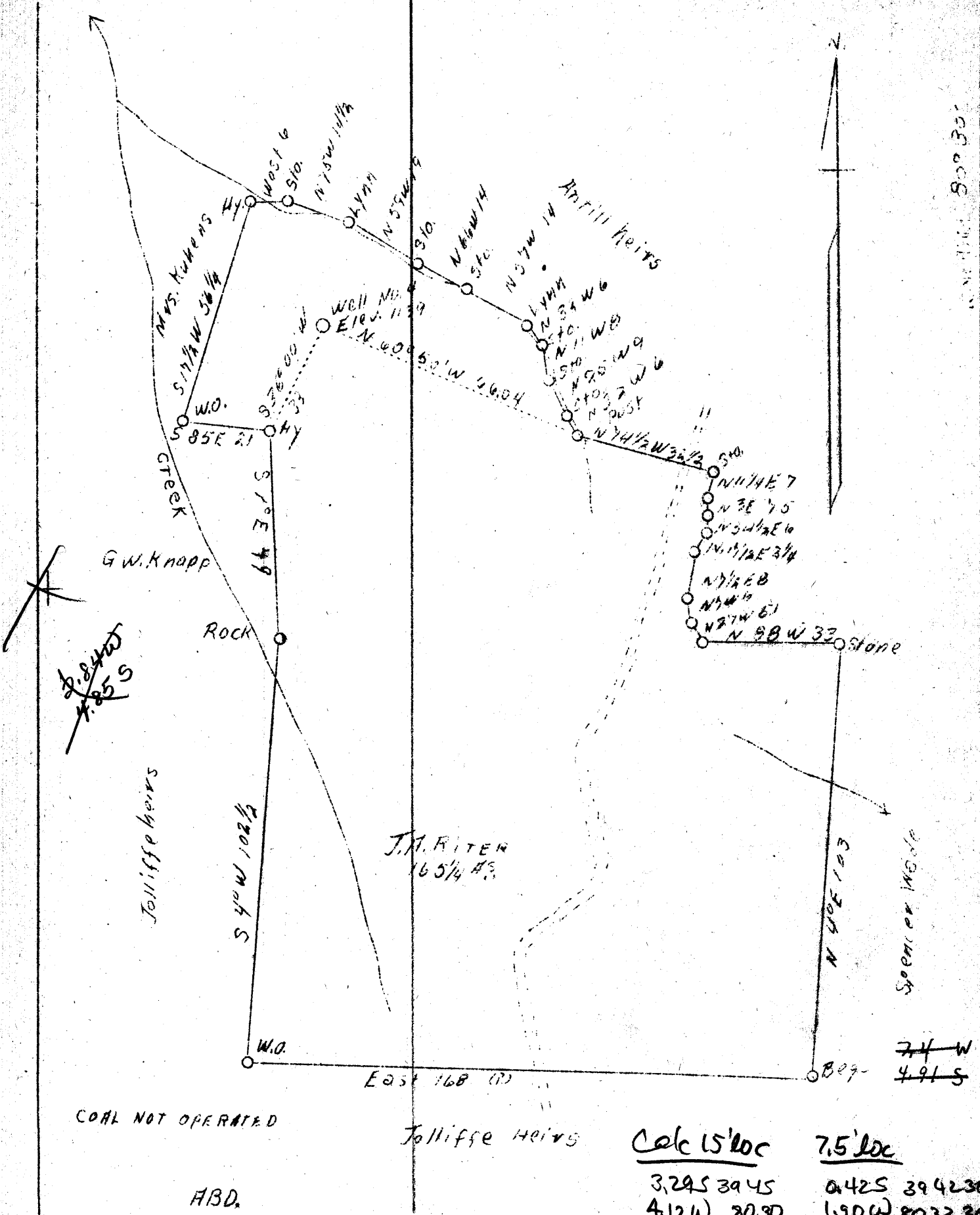


LATITUDE 39° 46'

80° 35'

80° 30'



COAL NOT OPERATED

H.B.D.

Tolliffe heirs

Calc 15' loc 7.5' loc

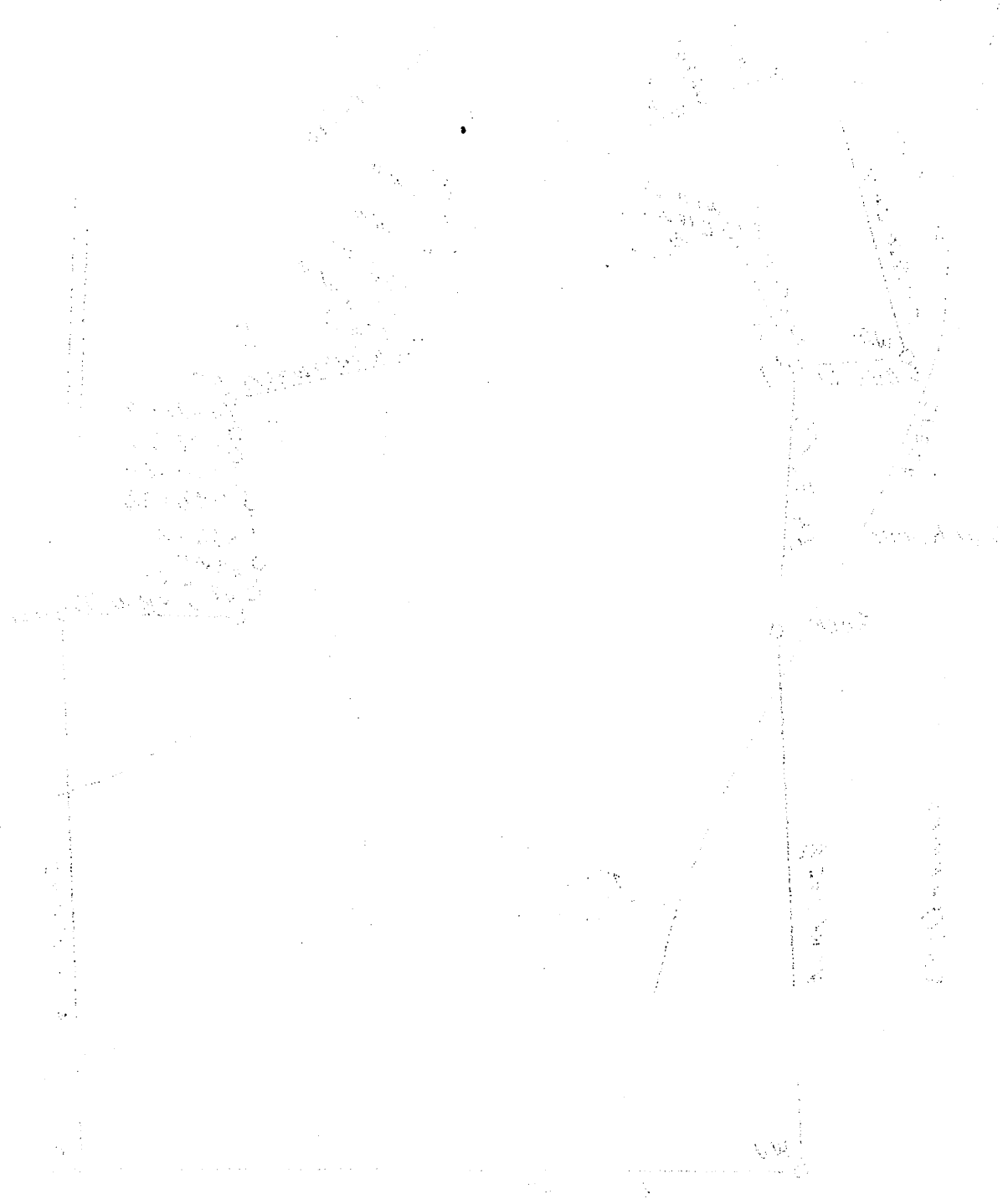
3,295	3945	0.425	394230
4.12W	2030	1.90W	803230

Company G. L. Phillips
 Address Blacksville, W. Va.
 Farm J. A. Riter
 Tract One
 Acres 165-1/4
 Well (Farm) No. Four (C-1009)
 Serial No. 1009
 Elevation (SP) 1139'
 Quadrangle Littleton + (5' NE)
 County Wetzel
 District Clay Center
 Engineer A. L. Headley
 Eng. Reg. No. -
 Date 9-1-38
 Scale 1" - 500'

STATE OF WEST VIRGINIA
 Department of Mines
 OIL & GAS DIVISION
 Charleston
 was 73282
 WELL LOCATION MAP
 File No. WOL-280-A

x Denotes location of well on U. S. Topographic Maps, scale 1 to 62,500, latitude and longitude lines being represented by border lines as shown.

- Denotes one inch spaces on border line of original tracing.



ALL DIMENSIONS
 TO BE IN INCHES
 UNLESS OTHERWISE
 SPECIFIED

DRAWN BY: [Name]
 CHECKED BY: [Name]

MATERIAL: [Material]
 FINISH: [Finish]

DATE: [Date]
 SCALE: [Scale]