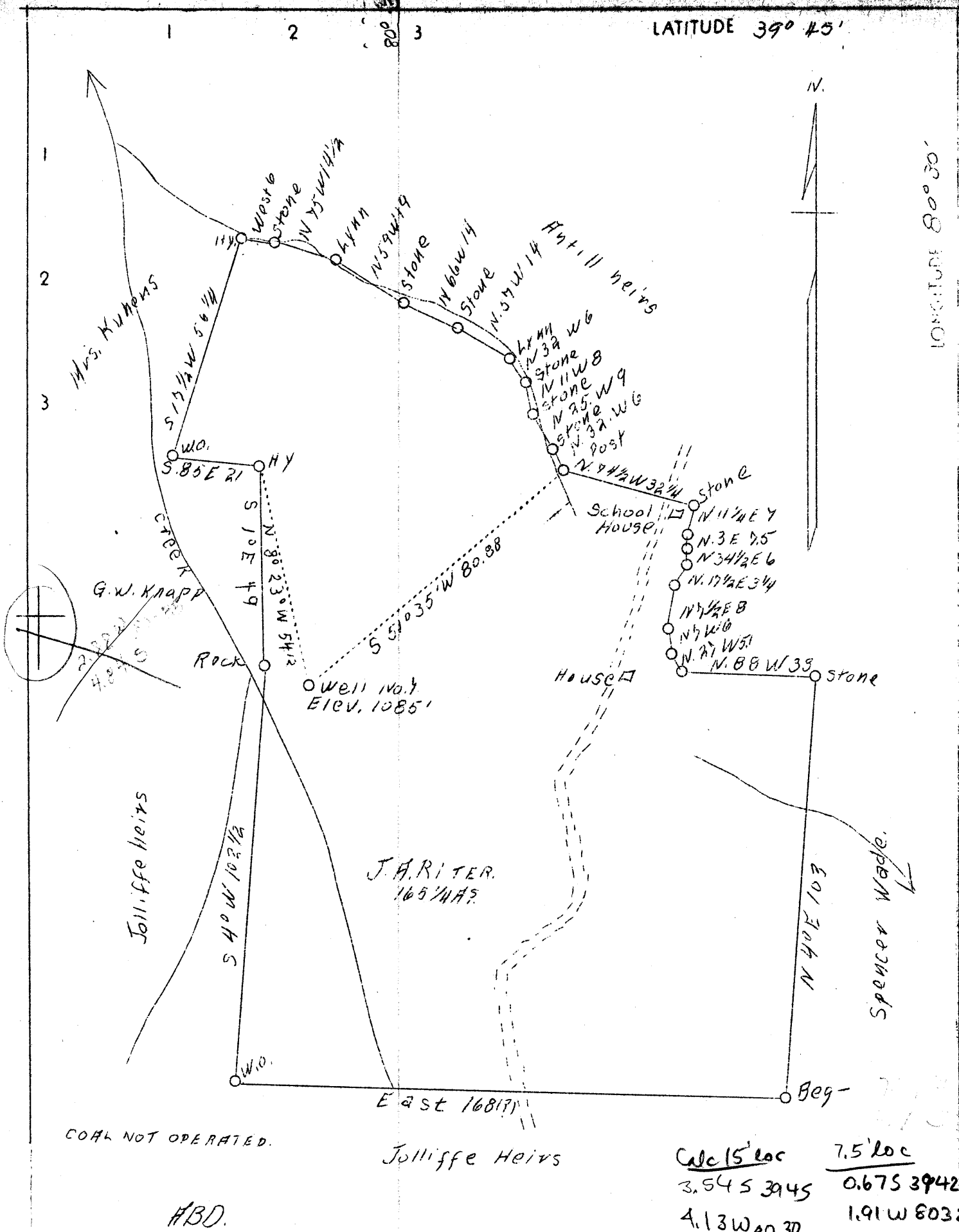


LATITUDE 39° 45'

LONGITUDE 80° 30'



COAL NOT OPERATED.

ABD.

Jolliffe Heirs

Calc 15' loc	7.5' loc
3.545 3945	0.675 394230
4.13 W 80 30	1.91 W 80 3230

Company	G. L. Phillips
Address	Blacksville, W. Va.
Farm	J. A. Riter
Tract	One
Acres	165-1/4
Well (Farm) No.	7
Serial No.	(1021)
Elevation (SP)	1085
Quadrangle	Littleton NE
County	Wetzel
District	Gray Center
Engineer	A. L. Headley
Eng. Reg. No.	-
Date	Sept. 1, 1938
Scale	1" = 500'

STATE OF WEST VIRGINIA
 Department of Mines
 OIL & GAS DIVISION
 Charleston Wad 73285

WELL LOCATION MAP

File No. Wet-274-A

x Denotes location of well on U. S. Topographic Maps, scale 1 to 62,500, latitude and longitude lines being represented by border lines as shown.

- Denotes one inch spaces on border line of original tracing.