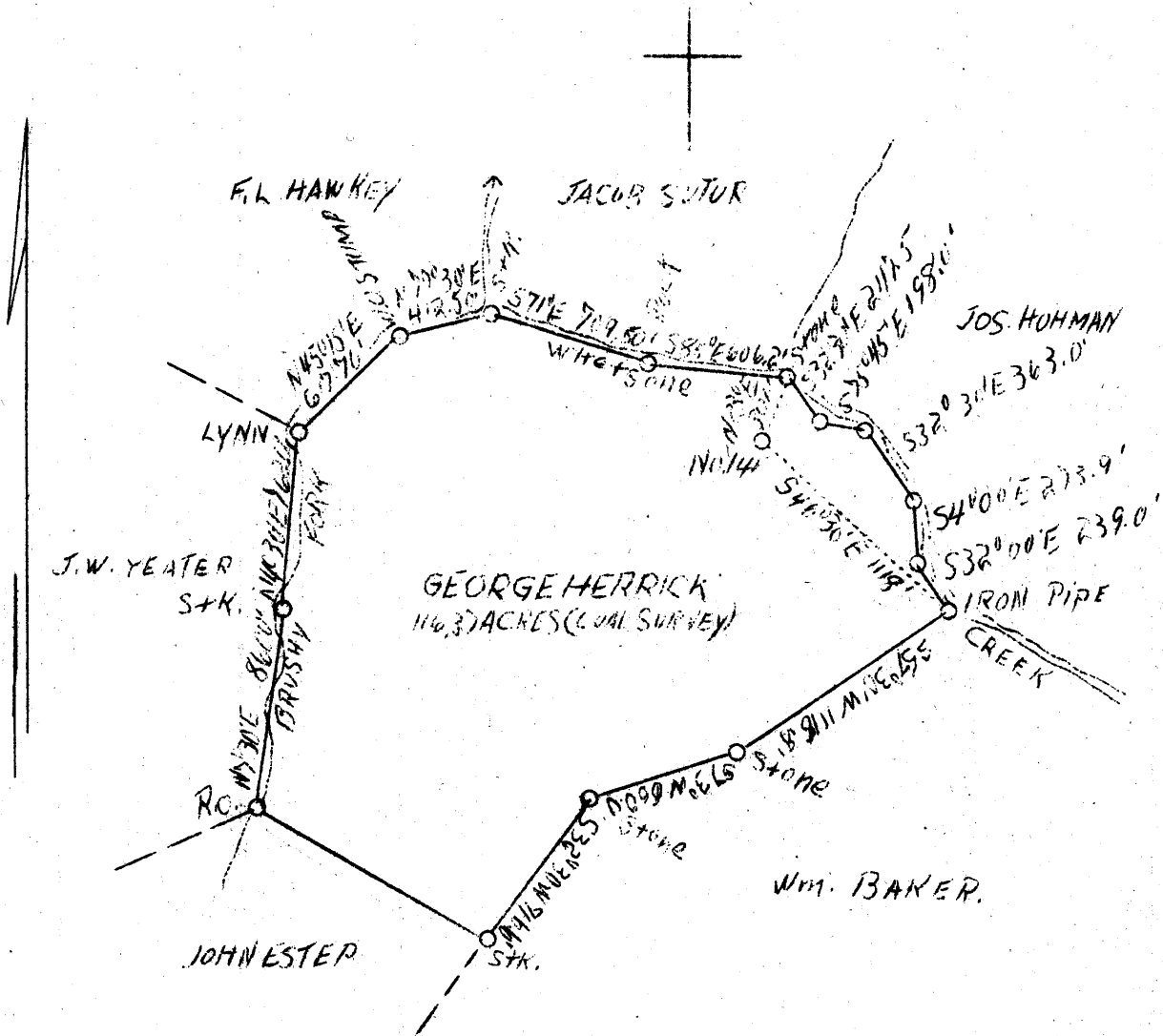


LATITUDE 39° 45'

LONGITUDE 80° 40'



COAL OWNED BY THE ROOSEVELT  
COAL & COKE CO  
WILMERDING - PA.

3.13 3.17 W  
2.34 Q

WELL ABD.

MAY - 2 1938

Company Union Gasoline & Oil Corp.  
 Address Riley Law Bldg., Wheeling, W. Va.  
 Farm George Herrick  
 Tract 1 Acres 116.37 Lease No. 3156  
 Well (Farm) No. 1 Serial No. 141  
 Elevation ( Spirit Level ) 1075'  
 Quadrangle Littleton NW  
 County Wetzel District Frontier  
 Engineer A. J. Russell  
 Engineer's Registration No. \_\_\_\_\_  
 File No. Y-2 939 Drawing No. \_\_\_\_\_  
 Date April 1, 1938 Scale 1"=600'

STATE OF WEST VIRGINIA  
 Department of Mines  
 OIL AND GAS DIVISION  
 CHARLESTON

WELL LOCATION MAP  
 File No. Wet-265-H

Denotes location of well on United States Topographic Maps, scale 1 to 62,500, latitude and longitude lines being represented by border lines as shown.

Denotes one inch spaces on border

Proctor District, Wetzel County, W. Va.

By M. L. & H. Co. (No. 1359)

Completed, Sept. 4, 1903.

Oil well. 4 bbls. after shot. 9-903, shot, 90 qts., at 2812'.

Elevation, 1106'±

Casing: 10", 1200'; 8", 1490'; 6-5/8", 2267'.

	Top.	Bottom.
Pittsburgh Coal	810	816
Big Dunkard Sand	1320	1355
Maxton Sand	1706	1725
Big Lime	1852	1904
Big Injun	1904	2150
Gants- Sand	2200	2215
Berea Sand	2530	2542
G. Stray (30-Ft.)	2755	2761
Gordon Sand	2812	2830
Total depth		2854

WEST VIRGINIA DEPARTMENT OF MINES  
OIL AND GAS DIVISION

555

WELL RECORD

Permit No. Drilled in 1903 WET-265-A

Oil or Gas Well oil  
(Kind)

Company Union Gasoline & Oil Corporation  
 Address 209 Riley Law Bldg., Wheeling, W. Va.  
 Farm George Herrick Acres 72  
 Location (waters) \_\_\_\_\_  
 Well No. 1 - 141 Elev. 1075'  
 District Proctor County Netzel  
 The surface of tract is owned in fee by Albert Herrick  
R. D. 1 Proctor Address West Virginia  
 Mineral rights are owned by Union Gasoline & Oil Corp  
209 Riley Law Bldg., Address Wheeling, W. Va.  
 Drilling commenced June 18, 1903  
 Drilling completed Sept 4, 1903  
 Date shot Sept 9, 1903 Depth of shot 2812  
 Open Flow /10ths Water in \_\_\_\_\_ Inch  
 /10ths Merc. in \_\_\_\_\_ Inch  
 Volume \_\_\_\_\_ Cu. Ft.  
 Rock Pressure \_\_\_\_\_ lbs. \_\_\_\_\_ hrs.  
 Oil \_\_\_\_\_ bbls., 1st 24 hrs.  
 Fresh water \_\_\_\_\_ feet \_\_\_\_\_ feet  
 Salt water \_\_\_\_\_ feet \_\_\_\_\_ feet

Casing and Tubing	Used in Drilling	Left in Well	Packers
Size			
16			Kind of Packer
13			
10	<u>1200'</u>		Size of
8 1/4	<u>1490'</u>		
6 5/8	<u>2267'</u>		Depth set
5 3/16			
3			Perf. top
2			Perf. bottom
Liners Used			Perf. top
			Perf. bottom

CASING CEMENTED \_\_\_\_\_ SIZE \_\_\_\_\_ No. FT. \_\_\_\_\_ Date \_\_\_\_\_  
 COAL WAS ENCOUNTERED AT 715 FEET 60 INCHES  
810 FEET 72 INCHES FEET \_\_\_\_\_ INCHES  
 FEET \_\_\_\_\_ INCHES FEET \_\_\_\_\_ INCHES

Formation	Color	Hard or Soft	Top	Bottom	Oil Gas or Water	Depth Found	Remarks
Mapletown Coal			715	720			
Pittsburgh Coal			810	816			
Big Dunkard Sand			1320	1355			
Maxon Sand			1706	1725			
Big Lime			1852	1904			
Big Injua Sand			1904	2150			
Gantz Sand			2200	2215			
Berea Grit Sand			2530	2542			
Gordon Stray Sand			2755	2761			
Gordon Sand			2812	2830			
Total depth				2854			



APR 27 1938

Formation	Color	Hard or Soft	Top	Bottom	Oil, Gas or Water	Depth Found	Remarks

Date April 20th, 19 38

APPROVED UNION GASOLINE & OIL CORPORATION, Owner

By J. H. Hall  
Supt. (Title)